

BRIGHT BULLET FORKLIFT



OPERATION MANUAL

***BRIGHT COOP, INC.
803 W. SEALE
NACOGDOCHES, TEXAS 75964***

Phone (936) 564-8378

Fax (936) 564-3281

E-mail info@brightcoop.com

BULLET
Forklifts



POULTRY FIELD LOADER

**This page
Intentionally
Left blank**



Table of Content

BRIGHT BULLET	5
IMPORTANT!!.....	9
WARNING	11
ROUGH TERRAIN FORKLIFT TRUCK GENERAL SAFETY STANDARDS ..	13
STUDY THE OPERATOR/SERVICE MANUALS:	13
ADDITIONAL RECOMMENDED LITERATURE:.....	13
A.) OPERATOR TRAINING QUALIFICATIONS	13
B.) GENERAL SAFETY PRACTICES	13
B.) GENERAL SAFETY PRACTICES (cont.).....	14
C.) OPERATING SAFETY RULES AND PRACTICES	14
C.) OPERATING SAFETY RULES AND PRACTICES (cont.)	15
C.) OPERATING SAFETY RULES AND PRACTICES (cont.)	16
CONCLUSION:	17
DECALS	18
DECALS (cont.)	19
SAFETY RULES-GENERAL	21
SAFETY RULES- ENGINE.....	22
SAFETY RULES- PREPARING TO OPERATE	22
SAFETY RULES- OPERATING	23
MAST SAFETY PRECAUTIONS	24
WARRANTY AND LIMITATIONS OF LIABILITY	25
WARRANTY INFORMATION SHEET	27
FORKLIFT WARRANTY	27
ENGINE WARRANTY	27
JOHN DEERE WARRANTY	28
IMPORTANT	28
READ THIS PAGE	28
IMPORTANT SERVICE BULLETIN	29
TROUBLESHOOTING	31
ENGINE HARD TO START, WILL NOT START.....	31
ENGINE KNOCKS	31
ENGINE RUNS IRREGULARY OR STALLS FREQUENT	31
BELOW NORMAL ENGINE TEMPERATURE	31
LACK OF ENGINE POWER.....	32
ENGINE OVERHEATS	32
HIGH OIL CONSUMPTION	32
HIGH FUEL CONSUMPTION.....	33
DIESEL ENGINE EMITS BLACK OR GREY EXHAUST SMOKE	33
DIESEL ENGINE EMITS WHITE SMOKE	33
BATTERY WILL NOT CHARGE.....	33
STARTER INOPERATIVE	33
STARTER CRANKS SLOWLY	34
ENTIRE HYDRAULIC SYSTEM FAILS TO FUNCTION	34
HYDRAULIC OIL OVERHEATS.....	34
FORKS FAIL TO HOLD UP OR LOWERS TOO RAPIDLY	34
FORKS LIFT TOO SLOWLY	34
PUMP MAKES NOISE	34
MAST TROUBLESHOOTING GUIDE	35
MAST TROUBLESHOOTING GUIDE	37
MAINTENANCE SCHEDULE	41
ENGINE SPECIFICATIONS	43
FLUID CAPACITY FOR BRIGHT BULLET	45



POULTRY FIELD LOADER

**This page
Intentionally
Left blank**



BULLET
Forklifts

POULTRY FIELD LOADER



BRIGHT COOP, INC

803 W. Seale
Nacogdoches, TX 75964

Tel. – (936) 564-8378

Fax – (936) 564-3281

For Parts Orders Contact
Bright Coop, Inc. Parts Dept.
Tel – (936) 564-8378, Fax – (936) 564-3281
Or *email - info@brightcoop.com*

BRIGHT BULLET

NOTE:

If contacting us via email, include a telephone number where you can be contacted in case we have questions about your order.



**This page
Intentionally
Left blank**



Name of Company

City & State

BRIGHT BULLET FORKLIFT

MODEL #

SERIAL #

MAST MODEL #

MAST SERIAL #

CARRIAGE MODEL #

CARRIAGE SERIAL #

DATE OF MANUFACTURE

DATE IN SERVICE _____



POULTRY FIELD LOADER

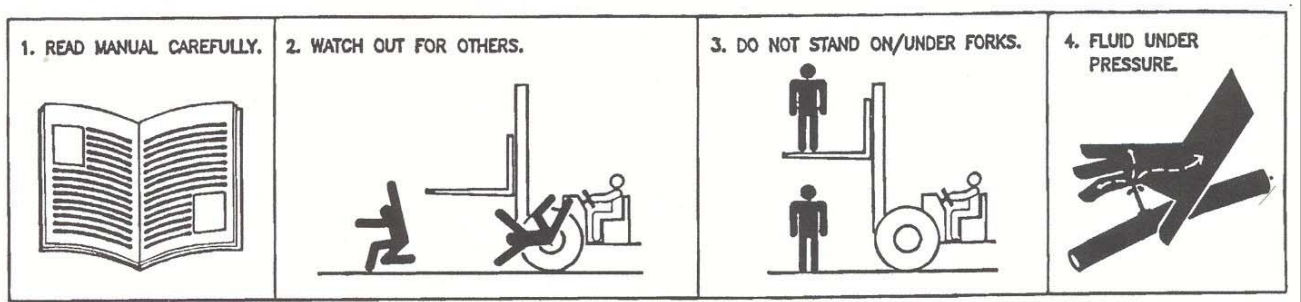
**This page
Intentionally
Left blank**

IMPORTANT!!

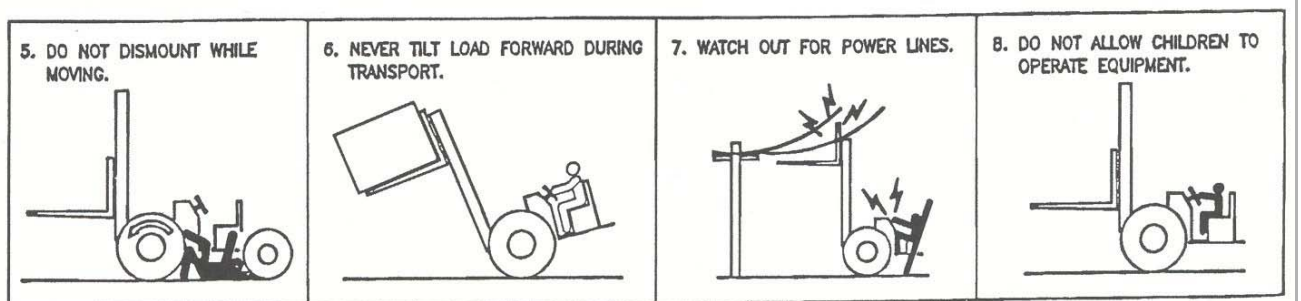
THE FOLLOWING PRECAUTIONS ARE SUGGESTED TO HELP PREVENT ACCIDENTS. A CAREFUL OPERATOR IS THE BEST OPERATOR. MOST ACCIDENTS CAN BE AVOIDED BY OBSERVING CERTAIN PRECAUTIONS. READ AND TAKE THE FOLLOWING PRECAUTIONS BEFORE OPERATING THIS FORKIFT. EQUIPMENT SHOULD BE OPERATED ONLY BY THOSE WHO ARE RESPONSIBLE AND INSTRUCTED TO DO SO.



FAILING TO FOLLOW SAFETY WARNINGS AND INSTRUCTIONS CAN RESULT IN SERIOUS BODILY INJURY OR EVEN DEATH TO OPERATOR AND/OR OTHERS IN THE AREA.



1. Study the Operator's Manual thoroughly, and be completely knowledgeable about operation of equipment. Please pay close attention to Safety Warnings posted in various areas of the Operation Section.
2. Be careful of other persons in vicinity. **ALLOW NO RIDERS.**
3. **DO NOT** stand on or under the forks for any reason.
4. Hydraulic fluid is under pressure. **DO NOT** use hand to check for leaks. Use a piece of cardboard or paper. If fluid is injected into skin, obtain medical attention immediately.
5. Always start engine while sitting in driver's seat. Shut *off* equipment before dismounting from machine. Remove key before performing any service or maintenance.
6. Never tilt forks forward while transporting load. This could cause machine to tip over. Keep load tilted back and as close to ground as possible.
7. Watch for low clearances such as power lines when operating equipment. Electrocutation could occur as a result of contact.
8. **NEVER** allow children or anyone not properly trained to operate equipment.





**This page
Intentionally
Left blank**

Warning

WARNING

The engine exhaust from this product contains chemicals known to the State of California to cause cancer, birth defects or other reproductive harm.



POULTRY FIELD LOADER

**This page
Intentionally
Left blank**

ROUGH TERRAIN FORKLIFT TRUCK GENERAL SAFETY STANDARDS

STUDY THE OPERATOR/SERVICE MANUALS:

The information in this manual provides general instructions for the safe operation and maintenance of your forklift truck. This information is vital and must be clearly understood by the operator and serviceman. Study this manual and the Rough Terrain Forklift Safety Manual thoroughly and carefully before operating or servicing your forklift. Contact your dealer or Bright Coop Inc. if you have any questions concerning your forklift, its operation, service or parts. Keep both manuals in the literature box on the forklift available for reference. If either manual becomes illegible or is missing, contact your dealer for replacements immediately. This manual cannot cover every situation that might result in an accident. It is the responsibility of the operator to always remain alert for potential hazards and be prepared to avoid them!

ADDITIONAL RECOMMENDED LITERATURE:

ASME 856.6 is the national consensus standard for rough terrain forklift trucks. It contains rules about forklift safety, maintenance, safe operation, training, and supervision. Forklift owners should learn this standard and make it available for their operators, service personnel, and supervisors. These standards can be obtained from the American Society of Mechanical Engineers (ASME), 345 East 47th St., United Engineering Center, New York, NY 10017. The following references are examples from the standard, addressing forklift operators:

A.) OPERATOR TRAINING QUALIFICATIONS

- 1.) The user shall ensure that operators understand that safe operation is the operator's responsibility. The user shall ensure that operators are knowledgeable of, and observe, all safety rules and practices.
- 2.) Create an effective operator training program centered around user company's policies, operating conditions, and rough terrain forklift trucks. The program should be presented completely to all new operators and not be condensed for those claiming previous experience.
- 3.) Information on operator training is available from several sources, including rough terrain forklift truck manufacturers, users, government agencies, etc.
- 4.) An operator training program should consist of the following:
 - a. careful selection of the operator, considering physical qualifications, job attitude, and aptitude;
 - b. emphasis on safety of stock, equipment, operator, and other personnel;
 - c. citing of rules and why they were formulated;
 - d. basic fundamentals of rough terrain forklift truck and component design as related to safety, e.g., in.-lb (N-m) loading, mechanical limitations, center of gravity, stability, etc.;
 - e. introduction to equipment, control locations, and functions. Explain how they work when used properly and problems when used improperly.
 - f. supervise practice on operating course remote from normal activity and designed to simulate actual operations, e.g., lumber stacking, elevating shingles to the roof, etc.;
 - g. oral, written, and operational performance tests and evaluations during and at completion of the course;
 - h. refresher courses, which may be condensed versions of the primary course, and periodic "on job" operator evaluation;
 - i. understanding of nameplate data and operator instructions and warning information appearing on the rough terrain forklift truck.

B.) GENERAL SAFETY PRACTICES

- 1.) Rough terrain forklift trucks can cause injury if improperly used or maintained.
- 2.) Only authorized operators trained to adhere strictly to all operating instructions shall be permitted to operate rough terrain forklift trucks. Unusual operating conditions may require additional safety precautions, training, and special operating instructions.
- 3.) Modifications and additions which affect capacity or safe operation shall not be performed without the manufacturer's prior written approval. Where such authorization is granted, capacity, operation, and maintenance instruction plates, tags, or decals shall be changed accordingly.
- 4.) If the rough terrain forklift truck is equipped with front end attachment(s) or optional forks, the user shall see that the truck is marked to identify the forks or attachment(s), show the approximate weight of the truck and fork or attachment combination, and show the capacity of the truck with forks or attachment(s) at maximum elevation with load laterally centered.
- 5.) The user shall see that all nameplates and caution and instruction markings are in place and legible.
- 6.) The user shall consider that changes in load dimension may affect rough terrain forklift truck capacity.
- 7.) Where steering can be accomplished with either hand and the steering mechanism is of a type that prevents road reactions from causing the hand wheel to spin (power steering or equivalent), steering knobs may be used. When used, steering knobs shall be of a type that can be engaged by the operator's hand from the top and shall be within the periphery of the steering hand wheel.



ROUGH TERRAIN FORKLIFT TRUCK GENERAL SAFETY STANDARDS (cont.)

B.) GENERAL SAFETY PRACTICES (cont.)

8. Experience has shown that rough terrain forklift trucks, which comply with stability requirements, are stable when properly operated. However, improper operation, faulty maintenance, or poor housekeeping may contribute to a condition of instability and defeat the purpose of the requirements.
9. Users shall give consideration to special operating conditions. The amount of forward and rearward tilt to be used is governed by the application. Although the use of maximum rearward tilt is allowable under certain conditions, such as traveling with the load lowered, the stability of a rough terrain forklift truck as determined by standardized tests does not encompass consideration for excessive tilt at high elevations or the operation of trucks with excessive off-center loads.
10. Some of the conditions which may affect stability are ground and floor conditions, grade, speed, loading (rough terrain forklift trucks equipped with attachments behave as partially loaded trucks even when operated without a load on the attachment), dynamic and static forces, improper tire inflation, and the judgment exercised by the operator.

C.) OPERATING SAFETY RULES AND PRACTICES

1. Safe operation is the responsibility of the operator.
2. This equipment can be dangerous if not used properly. The operator shall develop safe working habits and also be aware of hazardous conditions in order to protect himself, other personnel, the rough terrain forklift truck, and other material.
3. The operator shall be familiar with the operation and function of all controls and instruments before undertaking to operate the rough terrain forklift truck.
4. Before operating any rough terrain forklift truck, truck operators shall have read and be familiar with the operator's manual for the particular truck being operated.
5. Before starting to operate the rough terrain forklift truck:
 - a.) be in operating position and fasten seat belt
 - b.) place directional controls in neutral
 - c.) apply brakes
 - d.) start engine
6. Do not start or operate the rough terrain forklift truck, any of its functions, or attachments from any place other than the designated operator's position.
7. Keep hands and feet inside the operator's designated area or compartment. Do not put any part of the body outside the operator compartment of the rough terrain forklift truck.
8. Never put any part of the body into the mast structure or between the mast and the rough terrain forklift truck.
9. Never put any part of the body within the reach mechanism of the rough terrain forklift truck or other attachments.
10. Understand rough terrain forklift limitations and operate the truck in a safe manner so as not to cause injury to personnel.
11. Do not allow anyone to stand or pass under the elevated portion of any rough terrain forklift truck, whether empty or loaded.
12. Do not permit passengers to ride on rough terrain forklift trucks.
13. Check clearance carefully before driving under electrical lines, bridges, etc.
14. A rough terrain forklift truck is attended when the operator is less than 25 ft (7.6m) from the truck, which remains in his view.
15. A rough terrain forklift truck is unattended when the operator is 25ft (7.6m) or more from the truck, which remains in his view, or whenever the operator leaves the truck and it is not in his view.
16. Before leaving the operator's position:
 - a.) bring rough terrain forklift truck to a complete stop
 - b.) place directional controls in neutral
 - c.) apply the parking brake
 - d.) lower load-engaging means fully, unless supporting an occupied elevated platform
 - e.) stop the engine
 - f.) if the rough terrain forklift truck must be left on an incline, block the wheels
 - g.) fully lower the load-engaging means
17. Maintain a safe distance from the edge of ramps, platforms, and other similar working surfaces.
18. Do not move railroad cars or trailer with a rough terrain forklift truck.
19. Do not use a rough terrain forklift truck for opening or closing railroad car doors.
20. In areas classified as hazardous, use only rough terrain forklift trucks approved for use in those areas.
21. Report all accidents involving personnel, building structures, and equipment to the supervisor or as directed.

ROUGH TERRAIN FORKLIFT TRUCK GENERAL SAFETY STANDARDS (cont.)

C.) OPERATING SAFETY RULES AND PRACTICES (cont.)

22. Do not add to, or modify, the rough terrain forklift truck.
23. Do not block access to fire aisles, stairways, and fire equipment.
24. For rough terrain forklift trucks equipped with a differential lock, the lock should not be engaged when driving on the road or at high speeds or when turning. If the lock is engaged when turning, there could be loss of steering control.
25. Observe all traffic regulations including authorized speed limits. Under normal traffic conditions, keep to the right, maintain a safe distance, based on speed of travel, from the truck ahead; and keep the truck under control at all times.
26. Yield the right-of-way to pedestrians and emergency vehicles such as ambulances and fire trucks.
27. Do not pass another truck traveling in the same direction at intersections, blind spots, or at other dangerous locations.
28. Slow down and sound the audible warning device(s) at cross-aisles and other locations where vision is obstructed.
29. Cross railroad tracks at an angle wherever possible. Do not park closer than 6 ft (1.8m) to the nearest rail of a railroad track.
30. Keep a clear view of the path of travel and observe other traffic, personnel, and safe clearances.
31. If the load being carried obstructs forward view, travel with the load trailing.
32. Ascend or descend grades slowly and with caution.
 - a.) When ascending or descending grades in excess of 5%, loaded rough terrain forklift trucks should be driven with the load upgrade.
 - b.) Unloaded rough terrain forklift trucks should be operated on all grades with the load-engaging means downgrade.
 - c.) On all grades, the load and load-engaging means shall be tilted back, if applicable, and raised only as far as necessary to clear the road surface.
 - d.) Avoid turning, if possible, and use extreme caution on grades, ramps, or inclines; normally travel straight up or down.
- 33.) Under all travel conditions, operate the rough terrain forklift truck at a speed that will permit it to be brought to a stop in a safe manner.
34. Travel with load-engaging means or load low and, where possible, tilted back. Do not elevate the load except during stacking.
35. Make starts, stops, turns, or direction reversals in a smooth manner so as not to shift load and/or overturn the rough terrain forklift truck.
36. Do not indulge in stunt driving or horseplay.
37. Slow down for wet and slippery surfaces.
38. Before driving over a dockboard or bridge plate, be sure that it is properly secured. Drive carefully and slowly across the dockboard or bridge plate, and never exceed its rated capacity.
39. Do not drive rough terrain forklift trucks onto any elevator unless specifically authorized to do so. Approach elevators slowly, and then enter squarely after the elevator car is properly leveled. Once on the elevator, neutralize the controls, shut off engine, and set brakes. It is advisable that all other personnel leave the elevator before truck is allowed to enter or leave.
40. Avoid running over loose objects on the roadway surface.
41. When negotiating turns, reduce speed to a safe level, and turn steering handwheel in a smooth sweeping motion. Except when maneuvering at a very low speed, turn the steering handwheel at a moderate, even rate.
42. Use special care when traveling without load, as the risk of lateral overturning is greater.
43. Improper use of stabilizer controls (if so equipped) could cause rough terrain forklift truck upset. Always lower the carriage before operating stabilizer controls.
44. For rough terrain forklift trucks equipped with lateral leveling:
 - a.) Always level the frame before raising the boom or mast, with or without a load.
 - b.) Lateral leveling should not be used to position an elevated load; instead, lower the load and reposition the rough terrain forklift truck.
- 45.) Handle only stable or safely arranged loads.
 - a.) When handling off-center loads which cannot be centered, operate with extra caution.
 - b.) Handle only loads within the capacity of the rough terrain forklift truck.
 - c.) Handle loads exceeding the dimensions used to establish rough terrain forklift truck capacity with extra caution. Stability and maneuverability may be adversely affected.
- 46.) When attachments are used, extra care shall be taken in securing, manipulating, positioning, and transporting the load. Operate rough terrain forklift trucks equipped with attachments as partially loaded trucks when not handling a load.



ROUGH TERRAIN FORKLIFT TRUCK GENERAL SAFETY STANDARDS (cont.)

C.) OPERATING SAFETY RULES AND PRACTICES (cont.)

47. Completely engage the load with the load-engaging means. Fork length should be at least two-thirds of load length. Where tilt is provided, carefully tilt the load backward to stabilize the load. Caution should be used in tilting backward with high or segmented loads.
48. Use extreme care when tilting load forward or backward, particularly when high tiering. Do not tilt forward with load-engaging means elevated except to pick up or deposit a load over a rack or stack. When stacking or tiering, use only enough backward tilt to stabilize the load.
49. The handling of suspended loads by means of a crane arm (boom) or other device can introduce dynamic forces affecting the stability of a rough terrain forklift truck. Grades and sudden starts, stops, and turns can cause the load to swing and create a hazard if not externally stabilized. When handling suspended loads:
 - a.) do not exceed the truck manufacturer's capacity of the rough terrain forklift truck as equipped for handling suspended loads.
 - b.) only lift the load vertically and never drag it horizontally;
 - c.) transport the load with the bottom of the load and the mast as low as possible;
 - d.) with load elevated, maneuver the rough terrain forklift truck slowly and cautiously, and only to the extent necessary to permit lowering to the transport position;
 - e.) use tag lines to restrain load swing whenever possible.
50. At the beginning of each shift and before operating the rough terrain forklift truck, check its condition, giving special attention to:
 - a.) tires and their inflation pressure
 - b.) warning devices
 - c.) lights
 - d.) lift and tilt systems, load-engaging means, chains, cables, and limit switches
 - e.) brakes
 - f.) steering mechanism
 - g.) fuel system(s)
51. If the rough terrain forklift truck is found to be in need of repair or in any way unsafe, or if it contributes to an unsafe condition, the matter shall be reported immediately to the user's designated authority, and the truck shall not be operated until it has been restored to safe operating condition.
52. If during operation the rough terrain forklift truck becomes unsafe in any way, the matter shall be reported immediately to the user's designated authority, and the truck shall not be operated until it has been restored to safe operating condition.
53. Do not make repairs or adjustments unless specifically authorized to do so.
54. When refueling, smoking in the area shall not be permitted, the engine shall be stopped, and the operator shall not be on the rough terrain forklift truck.
55. Spillage of oil or fuel shall be carefully and completely absorbed or evaporated and fuel tank cap replaced before restarting engine.
56. Do not use open flames when checking electrolyte level in storage batteries, liquid level in fuel tanks, or the condition of LPG fuel lines and connectors.

CONCLUSION:

1.) ATTEND OPERATOR TRAINING CLASSES

The forklift operator must clearly understand all instructions concerning the safe operation of the forklift and all safety rules and regulations of the work site. All operators must have successfully completed a training course in accordance with the Powered Industrial Truck Standard (29 CFR 1910.178) as described by the Occupational Safety and Health Administration (OSHA). They must be qualified as to their visual, hearing, physical, and mental ability to operate the equipment safely. NEVER use drugs or alcohol while operating a forklift! NEVER operate or allow anyone to operate a forklift when mental alertness or coordination is impaired! An operator on prescription or over-the-counter drugs must consult a medical professional regarding any side effects of the medication that may impair their ability to safely operate the forklift.

2.) CREATE A MAINTENANCE PROGRAM

OSHA recommends a maintenance log, listing repairs requested and completed, for each forklift. Also, "lock out tag procedures" should be utilized. If the forklift malfunctions, park it safely, remove the key, tag "Do Not Use", and report the problem to the proper authority or authorized service personnel immediately. For the best forklift performance and operation, a maintenance program is required. Use the hour meter on the instrument panel to keep maintenance properly scheduled. For repairs on major components (engine, transmission, etc.), contact your nearest dealer for a Repair Manual. Do not operate a forklift that is damaged or does not function properly. Only authorized personnel may make repairs or adjustments to the lift truck. After repairs, the lift truck must be tested for safe operation before returning to service.

3.) FORKLIFT KNOWLEDGE

Forklift trucks can cause serious injury if improperly used or maintained. Study all of the manuals provided for your forklift model. Learn the locations and meanings of all safety decals. If any decals are illegible or missing, have them replaced immediately. Make sure all safety features provided by the original manufacturer are in place and function properly. Do not operate a forklift with damaged, missing or unsafe components. Have it repaired by authorized service personnel. Learn the functions of all controls, gauges, indicator lights, etc. on the forklift. Know the speed/gear ranges, braking and steering capabilities, load ratings and clearances. When referring to the location of forklift components, the terms "left", "right", "front", and "rear" are related to the operator seated normally, facing forward in the operator's seat. If you have any questions about the forklift, consult your supervisor. Failure to fully understand or obey safety warnings can result in serious injury or death!

4.) WORK SITE KNOWLEDGE

Before operating on a work site, learn the rules for movement of people, forklifts and all other traffic. Check the size, weight, and condition of the loads you will be expected to handle. Verify that they are properly secured and safe to transport. Learn where the loads are to be placed, planning your route for a safe approach, watching for hazardous conditions. Will a signalman be required to help place the load? Remove any debris, which may cause tire damage or rupture. Plan your route around problem areas or have them corrected. Inform the supervisor of any unsafe conditions observed at the site. Examples of hazards: power lines, cables, low clearance structures, garage doors, telephone pole guide lines, fencing, loose lumber, building materials, drop-offs, trenches, rough/soft spots, oil spills, deep mud, steep inclines, railroad tracks, curbs, etc. NEVER approach power lines, gas lines or other utilities with the forklift! Always verify that local, state/provincial and federal regulations have been met. Report any accidents involving personnel, building structures, and equipment to the supervisor immediately. Always remain alert - conditions are constantly changing at the work site!

TECHNICAL SUPPORT

All data provided in this manual is subject to production changes, addition of new models, and improved product designs. If a question arises regarding your forklift, please consult your dealer or Bright Coop Inc. for the latest information. When ordering service parts or requesting technical information, quote the applicable Model/Serial Numbers.



DECALS

Fork Safety-360-00103

Location: Sides Of outer rails

Instructs personnel not to travel beneath or upon lift truck forks

Lowering Forks-360-00109

Location: Sides Of outer rails

Instructs personnel not to lower forks with mast tilted forward.



NO RIDERS-360-00102

Location: At cab entrance on fender.

Informs: riders are not allowed on the forklift.



Pinch Point-360-00105

Location: On the front and rear sides of the mast rails.



Machine May Roll-360-00104

Location: Near parking brake.

Informs: Engage parking brake or machine may roll downhill.

DECALS (cont.)

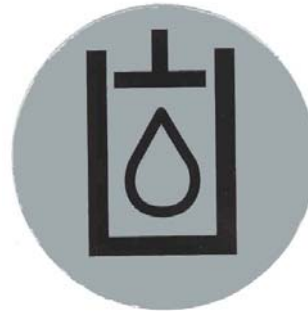
Diesel Fuel-360-00108
Location: On fuel tank

Identifies fuel tank.



Hydraulic Fluid-360-00107
Location: On hydraulic tank

Identifies hydraulic tank



Forward/Reverse-360-00106
Location: Near shifter

Informs driver if truck is in forward, neutral or reverse.





**This page
Intentionally
Left blank**

SAFETY RULES-GENERAL

- The safety of the operator is a prime consideration in the design of this forklift. Guards, shields, and other safety features are built in wherever possible. You can avoid many accidents by observing these safety rules.
- Allow only trained operators to use equipment.
- Do not wear loose clothing near moving parts.
- Do not oil, grease, or adjust the forklift while it is in motion.
- Keep a firm grip on the steering wheel when speeding up the forklift.
- Use caution in handling any type of fuel. Never fuel the forklift when the engine is hot or running. Do not smoke while fueling or servicing the fuel system.
- Never operate the forklift in a closed garage.
- It is a good practice to mount a fire extinguisher on the forklift. Be sure that the extinguisher is properly maintained and be familiar with its use.
- When driving the forklift on a road or highway, use accessory lights and devices to warn operators of other vehicles. In this regard, check local government regulations. Display the Slow Moving Vehicle emblem.
- When in operation, only one person, the operator, should be permitted on the forklift.
- Never allow anyone to work under a raised fork.
- Watch for overhead wires. Never touch wires with the forklift.
- Provide a first aid kit for use in case of accidents; use the proper antiseptics on scratches, cuts, and other injuries without delay.
- Never allow the load to obstruct forward vision.
- Never attempt to start or operate the forklift except from operator's seat.
- When traveling with a loaded fork, keep forks as low to the ground as possible and tilted back.
- If vehicle is parked on an incline, block at least two (2) wheels as a precaution against brake failure.
- Before dismounting from the unit, complete the following steps:
 1. Lower the mast with forks resting on the ground.
 2. Apply the parking brake.
 3. Shut the engine off.
- Always disconnect the battery cables before making adjustments on the engine or electrical equipment. This will prevent dangerous sparks, which create a fire hazard and may cause harm or damage. Disconnecting the battery also prevents accidental operation of the starter or engine.
- Escaping fluid under pressure can have sufficient force to penetrate the skin, causing serious personal injury. Before disconnecting lines, be sure to relieve all pressure. Before applying pressure to the system, be sure all connections are tight and that lines, pipes, and hoses are not damaged. Fluid escaping from a very small hole can be almost invisible. Use a piece of cardboard or wood, rather than hands, to search for suspected leaks.
- If injured by escaping fluid, see a doctor at once. Serious infection or reaction can develop if proper medical treatment is not administered immediately.



Safety Rules- Engine

- Careless use of the engine can cause accidents. You can avoid many accidents by following the safety rules on this page. Study these rules carefully and use them on the job.
- Never leave the forklift while it is running.
- Turn the radiator cap slowly to relieve pressure before removing it. Add coolant only when the engine is stopped or running at slow idle.
- Do not operate the engine in a closed building without proper ventilation.
- Remove trash from the engine and the area around it daily.
- Before using booster batteries, read the instructions.
- If a battery needs charging, turn off the charger before connecting or disconnecting the charger.
- Do not leave the engine running while making adjustments or repairs unless the manufacturer's instructions tell you to do so.
- Do not add oil or grease to the engine while it is running,
- Keep hands, feet, and clothing away from power driven parts.
- Check for loose electrical connections or bad wiring.
- Walk completely around the forklift. Make sure the area is clear before starting to work.
- Do not operate an engine with an unsafe condition. If one is seen, put a tag on the engine so other operators will also know about it.
- Clean feathers from radiator at least once every day.

Safety Rules- Preparing To Operate

- Always wear your seatbelt.
- Look around before moving the forklift. Start, turn, and brake smoothly,
- Be sure operating surfaces can safely support the forklift.

Position load evenly on both forks.

- Do not move forklift if conditions of instability or overloading exist.

Remember - keep your mind on operating the forklift. **Stay Alert and Stay Alive.**



Safety Rules- Operating

- Be careful near the edge of a loading dock.
- Always observe floor load limits and overhead clearance.
- Slow down for turns, ramps, dips, uneven or slippery surfaces and in congested areas. Avoid loose objects and holes in roadway surfaces.
- Sound horn at exits, corners, elevators, and when approaching pedestrians.
- Be extremely careful when turning on inclines.
- When handling long loads, watch end swing carefully.
- Operate in reverse when carrying bulky loads for better visibility.
- Use minimum tilt necessary when picking up or depositing a load.
- Maintain a safe distance from other vehicles.
- Lift loads gradually and smoothly. Operate lift and attachments only from operator's position.
- Carry loads close to the floor with the mast tilted slightly back to cradle the load.
- Always keep mast vertical or tilted back when lifting or lowering.
- Do not let the fork tips strike anything.
- When stacking, watch for falling objects.
- Tilt elevated load forward only when directly over unloading area and with load as low as possible.



MAST SAFETY PRECAUTIONS

IMPORTANT: BEFORE YOU OPERATE THE MAST MAKE SURE YOU HAVE READ AND FULLY UNDERSTAND THE MANUFACTURER'S MANUALS FOR YOUR FORKLIFT. IF THE MANUALS ARE MISSING, GET A REPLACEMENT MANUAL FROM YOUR EMPLOYER, DEALER OR FORKLIFT MANUFACTURER. KEEP SAFETY MANUALS ON THE FORKLIFT AT ALL TIMES.

SAFETY IS YOUR RESPONSIBILITY!

ONLY YOU CAN PREVENT SERIOUS INJURY OR DEATH FROM UNSAFE PRACTICES! PRACTICE ALL USUAL AND CUSTOMARY SAFE WORKING PRECAUTIONS, INCLUDING THE FOLLOWING:

1. NEVER CARRY PASSENGERS ON THE MAST OR FORKS!
2. Never use the mast or forks as battering rams.
3. Make daily inspections of the mast's performance, components, hydraulics and hose connections.
4. Avoid entanglement hazard - keep yourself and others away from the mast's moving parts.
5. DO NOT climb on the mast.
6. If the mast does not operate properly, have it inspected and repaired immediately.
7. Do not operate the mast without a legible load chart (do not over-load the mast).
8. Replace forks (in pairs) that are cracked or damaged; NEVER use forks repaired by welding.
9. Check that the forks are secure (unable to change position while carrying loads).
10. Plan ahead, know how and where you will travel, turn and pickup, lift and place loads.
11. Use a signal person when placing high loads.
12. Operate the mast smoothly (raising, lowering, and tilting of mast and forks); do not allow the lift cylinders to hit the end of their stroke abruptly.
13. Lower the forks to the ground when the Forklift is not in use.



BRIGHT COOP, INC.

803 West Seale Street
Nacogdoches, Texas 75964

Phone 936-564-8378 • Fax 936-564-3281

e-mail info@brightcoop.com



BRIGHT BULLET FORKLIFT **WARRANTY AND LIMITATIONS OF LIABILITY**

COVERAGE PROVIDED

Bright Coop, Inc. (BCI) warrants every part of the forklift manufactured by BCI to be free under normal use and service from defects in material and workmanship. This warranty extends to the original purchaser only and shall continue for a period of 1 year (or 2000 hours) whichever occurs first on all components from the date of sale of the original purchaser or date of original use, whichever is earlier. In addition John Deere warrants its engine for a period of 1 year with unlimited hours or 2 years/2000 hours. Any such parts proving to be defective within the warranty period may be, at the option of BCI, either repaired or replaced, provided that such defective parts are returned freight prepaid to the BCI factory in Nacogdoches, Texas, and provided further that written notice of such defective parts shall be given to BCI at the address shown above within 10 days of discovery of such defects.

The obligation of BCI to the purchaser under this warranty is limited to the repair or replacement of defective parts, which will cover charges for both parts and labor, using BCI service parts. Repair or replacement in accordance with this warranty shall constitute fulfillment of all liabilities of BCI.

Repairs or replacements will be performed by a qualified BCI technician or may be repaired or replaced by the original purchaser's mechanic as long as the work or replacement is done in accordance with BCI recommendations. If the repair(s) or replacement(s) are done by the original purchaser's mechanic, BCI will reimburse the original purchaser for a reasonable amount of labor involved at the rate of \$30.00 U.S. currency per hour if the original purchaser or authorized employee of the original purchaser mails or faxes a copy of this two page form which includes the date of original sale, the serial and model number of the unit to be repaired, a description of failure, causal part, the nature of the defect and obtain a Repair Authorization from BCI.

ITEMS NOT COVERED BY THIS WARRANTY

1. Parts not manufactured by BCI are not covered by this warranty and any warranty on such parts is limited to that extended by the original equipment manufacturer of such parts.
2. BCI makes no warranty whatsoever with respect to tires, tubes and batteries.
3. This warranty shall not apply:
 - a. If the forklift has been subject to misapplication, abuse, misuse, negligence, fire or other accident;
 - b. If parts not made or supplied by BCI have been used in connection with the forklift, if in the sole judgment of BCI such use affects its performance or reliability;
 - c. If the forklift has been altered or repaired in a manner which, in the sole judgment of BCI, affects its performance or reliability;
 - d. To incidental charges such as wrecker service, travel time, delivery charges, hydraulic oil, lubricants, fuel or anti-freeze;
 - e. To normal maintenance services (such as tune-ups, fuel system cleaning), to normal replacement of service items (such as filters), or to normal deterioration due to use or exposure (such as belts and exterior finish);
 - f. Unless all safety devices and guards provided with the equipment are properly installed and used in this operation and unless there is compliance with all operating procedures and maintenance instructions as set forth in the instructional and operating manuals furnished by BCI;
 - g. To any forklift if its serial number has been altered, defaced or removed, or if payment for the forklift is in default.

DISCLAIMER OF IMPLIED WARRANTIES AND CONSEQUENTIAL DAMAGES

THERE ARE NO EXPRESSED WARRANTIES COVERING THE BRIGHT BULLET MANUFACTURED BY BCI OTHER THAN AS SET FORTH ABOVE, AND THE WRITTEN WARRANTY IS IN LIEU OF ANY IMPLIED WARRANTIES, INCLUDING ANY IMPLIED WARRANTY OF MERCHANTABILITY OR FITNESS FOR A PARTICULAR PURPOSE. In no event shall BCI be liable for special, incidental or consequential damages or claims therefore, including (but not limited to) damages or claims due to lost profits, lost time, transportation, personal injury, property damage or other expenses whether or not resulting directly or indirectly from claimed defects covered by the above written warranty. No person is authorized to make on behalf of BCI any representations beyond those expressed herein.



POULTRY FIELD LOADER

RIGHT TO MAKE DESIGN CHANGES

Bright Coop, Inc. reserves the right to make changes in the design and other changes in its products at any time and from time to time without notice and without incurring any obligation with respect to any product previously ordered from it, sold or shipped by it.

GENERAL PROVISIONS

All notices, demands, claims or other communications with respect to this written warranty must be addressed to Bright Coop, Inc., 803 W. Seale, Nacogdoches, Texas, 75964.

This warranty shall be interpreted and governed by the laws of the State of Texas.

I acknowledge that I have read and I accept this warranty and limitation of liability and that I have been instructed in safe operation of the Bright Bullet and furnished with an operating manual related to the Bright Bullet I have purchased.

Bright Bullet Model No. _____

Mast Model No. _____

Bright Bullet S/N _____

Mast S/N _____

Date of Sale _____

Purchaser's Name _____

Purchaser's Business _____

Purchaser's Business Address _____

City _____ State _____ Zip Code _____

Purchaser or Authorized Agent's Signature of acceptance

DESCRIPTION OF FAILURE, CAUSAL PART, AND NATURE OF REPAIR OR REPLACEMENT SUMMARY



**BRIGHT COOP INC.
HYDROSTATIC FORKLIFT
WARRANTY INFORMATION SHEET**

Forklift Warranty

The forklift is warranted for 1 year or 2000 hours whichever comes first. A PDI (Pre-Delivery Inspection) Form must be turned in to activate the warranty. This form will be provided in the warranty information packet which is delivered with the forklift. It is also located in the front of the Forklift Owners Manual on the back of the warranty page. For more specific information you may contact our Service Department or you may refer to the warranty page in the front of your Forklift Owners Manual.

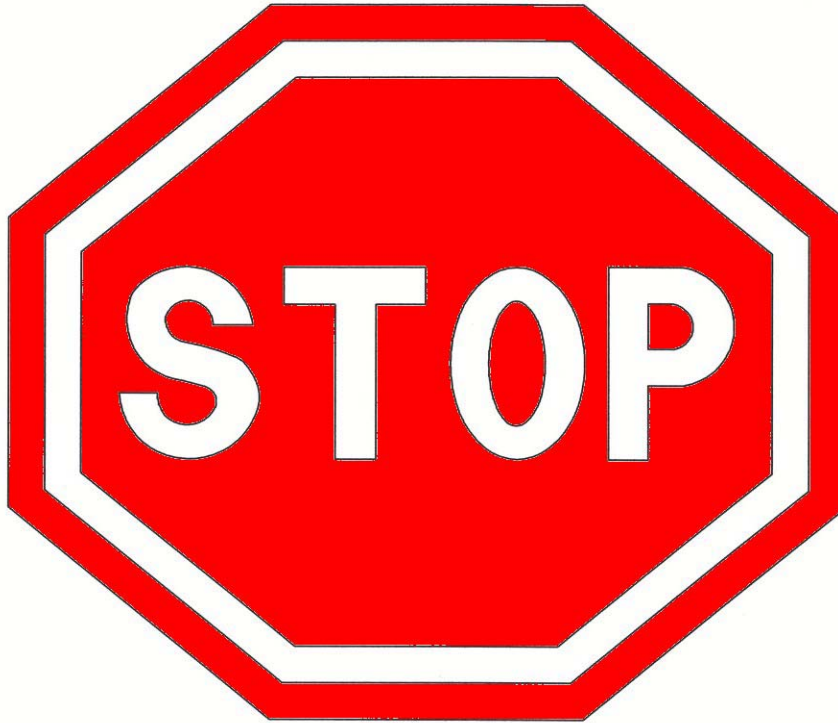
Engine Warranty

The engine is covered under John Deere's warranty. The warranty period on the engine is 12 months/unlimited hours or 2 years/2000 hours. This is covered directly with John Deere. A completed Warranty Registration Form has been sent to John Deere courtesy of Bright Coop to activate this warranty. Any local Industrial John Deere Dealer should be able to supply parts and service for the engine. If there is no local Industrial dealer near you, contact our Service Department and we will help you.

**** Warning: – There is an engine coolant substance in the John Deere Engine which must be maintained or you could void the warranty on the engine. Please refer to your manuals.**



JOHN DEERE WARRANTY INFORMATION PAGE



IMPORTANT READ THIS PAGE

Your John Deere Engine Warranty is directly with John Deere. Bright Coop has activated the warranty with John Deere. We have been instructed to inform you of a couple of guidelines which must be met to ensure the engine remains under warranty.

The break-in period for the John Deere Engine is 100 hours. After the first 100 hours you must change the engine oil and the engine oil filter. Please refer to page 10-9 in your John Deere Operation and Maintenance Manual.

The engine has a Supplemental Coolant Additive added when the engine is installed in your new equipment. It is important for you the operator to maintain this coolant level during the required service and maintenance of the engine. If this coolant level is not maintained, John Deere can void its warranty on the engine. Please refer to pages 10-13 & 10-14 in your John Deere Operation and Maintenance Manual for detailed information. Please be sure to read and follow all instructions in your Operator's Manual for correct service and maintenance procedures.



Bright Coop Inc.
803. W. Seale St.
Nacogdoches, TX 75961
Phone: (936) 564-8378
Fax: (936) 564-3281

IMPORTANT SERVICE BULLETIN

TO: Poultry Lift Customers

FROM: Bright Coop Inc.

SUBJECT: CLEANING GRILL SCREEN

We want to remind you of the importance of proper and regular cleaning of the grill screen and oil cooler/radiator. Especially during spring & summer months, it becomes very important to clean the grill screen on a regular basis. The following techniques are recommended and should be required by each garage manager to insure the longevity of the forklift(s).

- Brush off the grill screen with a straw whiskbroom after **every** truckload to allow the air to pass through easier.
This should be done with the engine OFF.
- Inspect the oil cooler daily to insure the radiator is not obstructed by debris.
- Clean oil cooler as required. Please note, if you choose to wash the oil cooler it must be blown dry using low pressure shop air **before** being sent back out into service.



BULLET Forklifts

POULTRY FIELD LOADER

BRIGHT COOP, INC.

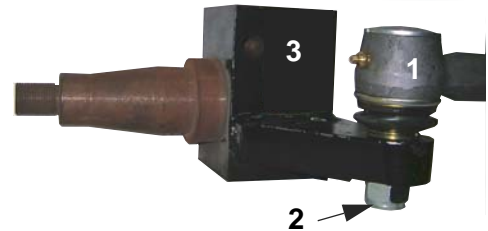
803 West Seale Street
 Nacogdoches, Texas 75964
 Phone 936-564-8378 • Fax 936-564-3281
 e-mail info@brightcoop.com



Service Bulletin
Date: 7/25/07
Subject: Loose Tie-Rod End Nuts

#0002

It has come to our attention that the Tie-Rod End Nuts can possibly work loose, after the Bullet Fork Lift is put into service.



Bright Coop Inc. initially torques each Tie-Rod End Nut to 160 Ft. lbs at assembly. Then after thoroughly testing each machine the Tie-Rod End Nuts are re-torqued to 160 ft. lbs, before the Fork Lift leaves our plant.

We recommend that after you take delivery of your new Bullet, the Tie-Rod End Nuts should be re-torqued, after the completion of the first shift of operation, or after the first 10hrs of service.

Furthermore, if the Tie-Rod Ends are removed for any reason, the Tie-Rod End Nut should be replaced with a New Nut even if the Tie-Rod End is replaced or not, and then torqued to 160 Ft. lbs. Then, after the completion of the first shift of operation, or after 10 hours of service the Nuts should be re-torqued to 160 Ft. lbs. These steps should eliminate any problems.

Bright Coop appreciates your feedback and do not hesitate to contact us.

Item	Part #	Description	Qt.	Models
1	098-00800	Tie-Rod end	2	all
2	098-01282	Tie-Rod end Nut (one for each end)	2	all
3	098-00422	Spindle (Left)	1	all
	098-00423	Spindle (Right)	1	all

Phone (936) 564-8378 & ask for Parts to Order

For information about our lifts or other products, phone 800-562-0730

BE BRIGHT

BUY RIGHT

BUY BRIGHT'S



Troubleshooting

This following pages list difficulties that might possibly be encountered and their possible remedies. If, after properly performing the listed remedies, the difficulty still exists, see your dealer. He has been trained and possesses the latest technical literature and equipment to put your forklift back in operating condition.

ENGINE HARD TO START, WILL NOT START

Possible Cause

Possible Remedy

- | | |
|--|--|
| No fuel - - - - - | Fill tank with proper fuel |
| Fuel transfer pump primer lever left up - - - - - | Move lever to lowest point of stroke |
| Low battery output - - - - - | Check electrolyte level and specific gravity of each cell
Recharge if necessary |
| Excessive resistance in starting circuit - - - - - | Clean and tighten all connections on battery and starter |
| Too-heavy viscosity crankcase oil - - - - - | Drain and fill crankcase with oil of proper viscosity |
| Improper fuel - - - - - | Consult fuel specifications and use proper type of fuel for operating conditions |
| Water, dirt, or air in fuel system - - - - - | Drain, flush, fill, and bleed system |
| Clogged fuel filter - - - - - | Replace filter element and bleed system |
| Circuit breaker for wiring open - - - - - | Turn off lights and starter switches for one minute
(Circuit breaker will reset itself) |
| Dirty or faulty injector nozzles - - - - - | See your dealer |
| Dirty or clogged fuel line filter - - - - - | Drain tank and remove fuel shut-off valve and clean filter |

ENGINE KNOCKS

Possible Cause

Possible Remedy

- | | |
|---|--------------------------------------|
| Insufficient crankcase oil - - - - - | Add proper oil |
| Dirt picked up by air intake system - - - - - | Check air cleaner for clogging |
| Injection pump out of time - - - - - | Check timing, See dealer for service |
| Stuck fuel injector nozzle - - - - - | See your dealer |

ENGINE RUNS IRREGULARY OR STALLS FREQUENT

Possible Cause

Possible Remedy

- | | |
|--|---|
| Low coolant temperature - - - - - | If water temperature gauge is not in normal range |
| Clogged fuel filter - - - - - | Replace filter element and bleed system |
| Water, dirt, or air in fuel system - - - - - | Drain, flush, and refill. Bleed system |
| Dirty or faulty injector nozzles - - - - - | See your dealer |

BELOW NORMAL ENGINE TEMPERATURE

Possible Cause

Possible Remedy

- | | |
|---------------------------------------|--|
| Defective thermostat - - - - - | Replace with new thermostat |
| Defective temperature gauge - - - - - | Check water with thermometer
Have serviceman replace gauge if defective |



POULTRY FIELD LOADER

LACK OF ENGINE POWER

Possible Cause

Possible Remedy

- Engine overload - - - - - Reduce load or shift to lower gear
- Too high viscosity oil in crankcase - - - - - Drain and fill crankcase with oil of proper viscosity
- Intake air restriction - - - - - Clean air cleaner
- Clogged fuel filter - - - - - Replace filter element and bleed system
- High altitude operation - - - - - Engines lose horsepower with increased altitude
Use proper type of fuel for high altitude
- Overheated engine - - - - - See "Engine overheats" below
- Improper valve clearance - - - - - See "Engine valve tappet adjustment"
- Dirty or faulty injector nozzles - - - - - See your dealer
- Injection pump out of time - - - - - Check timing, See dealer for service
- Obstruction in fuel system - - - - - See "Fuel system"

ENGINE OVERHEATS

Possible Cause

Possible Remedy

- Low coolant level - - - - - Fill radiator with coolant to the proper level
Check hoses and radiator for leaks or loose connections
- Dirty radiator core or grille screen - - - - - Remove all foreign matter from exterior of radiator core and grille screen
- Loose or defective alternator belt - - - - - Adjust belt tension. Replace worn belt
- Cooling system limed up - - - - - Drain and flush cooling system
Check water with thermometer
- Defective temperature gauge - - - - - Have serviceman replace gauge if defective
(If overheating, an engine must use water
Check water level.)
- Defective radiator pressure cap - - - - - Replace cap

HIGH OIL COMSUMPTION

Possible Cause

Possible Remedy

- Too low viscosity crankcase oil - - - - - Drain and fill crankcase with oil of proper viscosity
- Oil leaks - - - - - Check for leaks in lines and around gaskets and drain plugs
- Engine overheating - - - - - Reduce load or shift to lower gear

LOW ENGINE OIL PRESSURE

Possible Cause

Possible Remedy

- Low crankcase oil level - - - - - Check crankcase oil level on dipstick and add oil if needed
- Improper type of crankcase oil - - - - - Drain and fill crankcase with oil of proper viscosity
- Partially plugged oil filter - - - - - Check pressure with a master gauge
Replace filter



HIGH FUEL CONSUMPTION

Possible Cause

Possible Remedy

- Improper type of fuel - - - - - Consult fuel specifications and use proper type of fuel for operating conditions
- Engine overload - - - - - Reduce load or shift to lower gear
- Clogged or dirty air cleaner - - - - - Clean air cleaner
- Dirty or faulty injector nozzles - - - - - See your dealer
- Engine out of time - - - - - Make sure injector pump is timed properly. See your dealer for this service

DIESEL ENGINE EMITS BLACK OR GREY EXHAUST SMOKE

Possible Cause

Possible Remedy

- Improper type of fuel - - - - - Consult fuel specifications and use proper type of fuel for operating conditions
- Engine overload - - - - - Reduce load or shift to lower gear
- Clogged or dirty air cleaner - - - - - Clean air cleaner
- Dirty or faulty injector nozzles - - - - - See your dealer
- Engine out of time - - - - - Make sure injector pump is timed properly
See your dealer for this service
- Defective muffler - - - - - Check muffler for possible damage, which might create backpressure

DIESEL ENGINE EMITS WHITE SMOKE

Possible Cause

Possible Remedy

- Dirty air cleaner - - - - - Clean air cleaner
- Improper type of fuel - - - - - Low cetane fuel will cause misfiring
Use only fuel which has recommended cetane number
- Cold engine - - - - - Warm up engine to normal operating temperature
- Defective thermostat - - - - - Remove and check thermostat
- Engine out of time - - - - - Make sure injector pump is timed proper
See your dealer for this service

BATTERY WILL NOT CHARGE

Possible Cause

Possible Remedy

- Loose or corroded connections - - - - - Clean and tighten battery connections
- Sulfated or worn-out battery - - - - - Check specific gravity and electrolyte level of battery
- Loose or defective alternator belt - - - - - Adjust belt
Replace if worn

STARTER INOPERATIVE

Possible Cause

Possible Remedy

- Loose or corroded connections - - - - - Clean and tighten battery connections
- Low battery output - - - - - Check specific gravity and electrolyte level of battery



STARTER CRANKS SLOWLY

Possible Cause

Possible Remedy

- Loose or corroded connections - - - - - Clean and tighten battery connections
- Low battery output - - - - - Check specific gravity and electrolyte level of battery
- Too low viscosity crankcase oil - - - - - Drain and fill crankcase with oil of proper viscosity

ENTIRE HYDRAULIC SYSTEM FAILS TO FUNCTION

Possible Cause

Possible Remedy

- Low oil supply - - - - - Fill system with proper oil to mark on sight gauge
- Clogged filters - - - - - Replace filters
- Possible dirt in hydraulic pump - - - - - Check filters for clogging

HYDRAULIC OIL OVERHEATS

Possible Cause

Possible Remedy

- Low oil supply - - - - - Fill system with proper oil to mark on dipstick
- Oil cooler core clogged - - - - - Remove foreign matter from oil cooler and grille screens

FORKS FAIL TO HOLD UP OR LOWERS TOO RAPIDLY

Possible Cause

Possible Remedy

- Oil leaking past cylinder o-rings - - - - - See your dealer
- Oil leaking past control valve - - - - - See your dealer

FORKS LIFT TOO SLOWLY

Possible Cause

Possible Remedy

- Cold oil - - - - - Allow oil to warm up with slow engine speed
- Viscosity of oil too high - - - - - Use oil of proper viscosity
- Insufficient engine speed - - - - - Open throttle
- Badly worn pump - - - - - Repair or replace pump
See your dealer
- Leaking or broken lines from control valve to cylinders - - - - - Check for leaks
Tighten or replace lines
- Dirty oil - - - - - Drain and refill with new oil
- Oil leaking past cylinder o-rings - - - - - See your dealer
- Oil leaking past control valve - - - - - See your dealer

PUMP MAKES NOISE

Possible Cause

Possible Remedy

- Starvation - - - - - Check for low oil supply

MAST TROUBLESHOOTING GUIDE

The Troubleshooting Guide found on the following pages addresses problems sometimes encountered during mast operations. It also lists the probable causes and recommended corrective actions to restore the mast to its proper operating condition. Before repairing a faulty mast, read all safety precautions!



WARNING:

- 1. IF A MAST RAIL OR CARRIAGE BECOMES JAMMED OR HUNG-UP REMOVE THE MAST FROM SERVICE, MAKING NECESSARY REPAIRS IMMEDIATELY!**
- 2. USE ONLY THE APPROPRAITE TOOLS AND APPROVED HOIST/ HARNESS DURING MAST REPAIR OR ADJUSTMENTS!**
- 3. NEVER PLACE ANY PART OF YOUR BODY INSIDE THE WORKING AREA OF A JAMMED MAST!**
- 4. DO NOT OPERATE THE MAST WITH A DAMAGED HYDRAULIC SYSTEM.**



**This page
Intentionally
Left blank**

Mast Troubleshooting guide

PROBLEM:	POSSIBLE CAUSE:	CORRECTIVE ACTIONS:
<p>Mast will not lift load or lift cylinder does not move.</p>	<ol style="list-style-type: none"> 1. Mast overloaded. 2. Insufficient or no oil flow supplied to the cylinder. 	<ol style="list-style-type: none"> 1. Reduce the load. 2. Check the truck's hydraulic system: low oil level, defective pump, damaged control valve or leaks in supply line. Make repairs as required. <p>NOTE: Any time oil is added to the hydraulic tank, check the lift cylinders for air, they may need to be bled.</p>
<p>Mast lifts load slowly or to partial height.</p>	<ol style="list-style-type: none"> 1. Low on oil. 2. Mast cylinder seal failure. 3. Relief valve setting too low. 4. Mast rollers shimmed too tight, rails are off center or not lubricated, defective rollers 	<ol style="list-style-type: none"> 1. Check the truck's hydraulic system: low oil level, defective pump, damaged control valve or leaks in supply line. Make repairs as required. 2. Replace the seals. Failure caused by oil contamination requires the system be flushed, filters be replaced and fresh oil installed. 3. Adjust relief valve, do not exceed recommended setting. 4. Check rollers and rail alignment. Repair, adjust or lubricate as necessary.



Mast Troubleshooting guide (cont.)

PROBLEM:	POSSIBLE CAUSE:	CORRECTIVE ACTIONS:
<p>Mast jerks or has spongy movement.</p>	<ol style="list-style-type: none"> 1. Air in the hydraulic system. 2. Bent or damaged cylinder rod (piston). 3. Defective relief valve. 4. Rollers defective or shimmed too tight. 	<ol style="list-style-type: none"> 1. Check hydraulic oil level in the tank, check for vacuum leaks in the hydraulic system. Bleed the lift cylinders. 2. Repair or replace as necessary. 3. Remove and inspect the relief valve, repair or replace as necessary. If damaged by contaminated oil: flush the system, replace the oil filters and add fresh oil. 4. Re-shim or repair as needed.
<p>Mast drifts down slowly on its own.</p>	<ol style="list-style-type: none"> 1. Damaged or defective seals. 2. Pressure line leaking. 3. Control valve leaking. 	<ol style="list-style-type: none"> 1. Replace the seals. Failure caused by oil contamination requires the system be flushed, filters be replaced and fresh oil installed. 2. Inspect all hydraulic lines, hoses and connections. Tighten or replace as necessary. 3. Repair or replace the control valve.

Mast Troubleshooting guide (cont.)

PROBLEM:	POSSIBLE CAUSE:	CORRECTIVE ACTIONS:
Mast lowers too slowly, partially or not at all. Notice! See WARNING at the beginning of the Trouble Shooting Guide.	<ol style="list-style-type: none"> 1. Damaged lift cylinder(s). 2. Flow regulator faulty. 3. Rollers defective or shimmed too tight. 	<ol style="list-style-type: none"> 1. Inspect, repair or replace. 2. Replace regulator. 3. Re-shim or repair as needed.
Carriage drifts up when load is removed, then stops.	<ol style="list-style-type: none"> 1. Air in cylinder(s). 	<ol style="list-style-type: none"> 1. Bleed the cylinder(s).
Cylinders leak oil.	<ol style="list-style-type: none"> 1. Faulty seals or "O" rings. 	<ol style="list-style-type: none"> 1. Replace seals or "O" rings.
Mast does not fully extend.	<ol style="list-style-type: none"> 1. Hydraulic oil tank low. 	<ol style="list-style-type: none"> 1. Fill tank to proper level.
Excessive side movement in carriage or rails.	<ol style="list-style-type: none"> 1. Rollers need adjustment or repair. 	<ol style="list-style-type: none"> 1. Shim or replaced rollers as required.
Carriage or rails hang-up or bind during operation. Notice! See WARNING at the beginning of the Trouble Shooting Guide.	<ol style="list-style-type: none"> 1. Rollers need adjustment or repair. 	<ol style="list-style-type: none"> 1. Shim or replaced rollers as required.
Carriage is hitting or scraping the rails.	<ol style="list-style-type: none"> 1. Carriage rollers improperly shimmed or worn excessively. 	<ol style="list-style-type: none"> 1. Adjust or replace the carriage rollers.
Mast out of sequence on ascent, rails move before the carriage.	<ol style="list-style-type: none"> 1. Carriage travel is obstructed. 2. Carriage thrust rollers damaged or need adjustment. 3. Carriage rail rollers damaged or need adjustment. 4. Load excessively off center. 	<ol style="list-style-type: none"> 1. Remove obstruction. 2. Adjust or replace the thrust rollers. 3. Adjust or replace the rail rollers. 4. Center the load on the carriage.



Mast Troubleshooting guide (*cont.*)

PROBLEM:	POSSIBLE CAUSE:	CORRECTIVE ACTIONS:
<p>Mast out of sequence on descent, the carriage lowers before the rails retract.</p>	<ol style="list-style-type: none"> 1. Rails are shimmed too tight. 2. Center rail shimmed too tight in the outer rail. 3. Obstruction or debris. 4. Broken roller. 5. Defective flow regulator in the lift cylinder(s). 	<ol style="list-style-type: none"> 1. Re-shim the rails as required. 2. Re-shim the rails as required. 3. Remove any obstruction or debris. 4. Replace roller. 5. Replace the regulator.
<p>Excessive wear on one inner rail only.</p>	<ol style="list-style-type: none"> 1. Carriage roller on opposite side is broken. 	<ol style="list-style-type: none"> 1. Replace the roller, clean and lubricate the rail.



POULTRY FIELD LOADER

Maintenance Schedule

INTERVAL	ITEM						OPERATION
		CHECK	CLEAN	LUBE	CHANGE	ADJUST	
DAILY OR EVERY 10 HOURS	Air filter (Drain Water)	X					
	Engine Oil Level	X					
	Radiator Coolant Level	X					
	Hydraulic Fluid Level	X			X		Add ISO-46
	Radiator (Air Flow)	X	P				
	Oil Coolers	X	P				
	Fuel Filters (Drain Water)	X					
	Steer Wheel Spindles	X					
	King Pins	X		P			
	Lift Pivot			X			
	Lift Mast Rollers	X	X				
	Lift Mast Chains	X		X			
50 Hours	Air Filter		X				
	Battery	X			X		Add electrolyte As Required
	Steer Axle Pivots			X			
	Brake Pedal Pivots			X			
	Steer Cylinder Ends			X			
	Hydraulic System Oil Level	X					Add As Required
	Drive Axle Oil Level	X					Add As Required
	Hoses and Connections	X					
Tire Pressure	X						
150 Hours	Mast Chains						
	Charge Pressure Hydraulic System Filter						
	Fan Belts						
250 Hours	Engine Oil *				X		
	Engine Filter*				X		
	Fuel Filter*				X		
	Air Cleaner (Dry)*		X		P		
500 Hours	Charge Pressure Filter				X		
	Hydraulic Return Filter				X		Replace Every 500 Hrs.
	Diesel Fuel Injectors	X					
	Wheel Bearings	X	X	X			
1000 Hours	Mast Chains	X			X	X	Replace As Required
1200 Hours	Drive Axle Fluid				X		
	Hydraulic System Fluid and Filter				X		
Seasonal	Radiator Coolant- Pure Water				X		Change Every 6 Months And Use Rust Inhibitor
	Regular Antifreeze				X		Change Every 6 Months Or After Every Winter
	Permanent Antifreeze				X		Change Every 24 Months
*	* = Perform at 100 hours if subject to harsh conditions (Dusty environment)						
P	P = Perform if required						



**This page
Intentionally
Left blank**



Engine Specifications

MAKE - - - - -	JOHN DEERE 4045D
NUMBER OF CYLINDERS - - - - -	4
FUEL - - - - -	DIESEL
BORE - - - - -	4.19in. (106mm)
STROKE - - - - -	5.00 in. (110mm)
DISPLACEMENT - - - - -	4.5L (276 cu. in.)
COMPRESSION RATIO - - - - -	17.8:1
RATED SPEED - - - - -	2400 RPM
HP (INTERMITTENT) @ RS W/O FAN - - - - -	85
HP (CONTINUOUS) @ RS W/O FAN - - - - -	78
NORMAL WORKING RANGE - - - - -	1500-2400 RPM
LOW IDLE - - - - -	800 RPM
TORQUE (MAX) @ RPM (1200) W/O FAN - - - - -	217 lb./ft. 26.2 kg/m
BASIC WEIGHT - - - - -	1043 lbs. 474 kg
DIMENSIONS:	
WIDTH - - - - -	20.4 in. (519 mm)
HEIGHT - - - - -	32.2 in. (818 mm)
LENGTH - - - - -	33.2 in. (844 mm)
CRANKCASE CAPACITY:	
WITH FILTER CHANGE - - - - -	15 Qts. (14.2L)
WITHOUT FILTER CHANGE - - - - -	14 Qts. (13.2L)



**This page
Intentionally
Left blank**



FLUID CAPACITY FOR BRIGHT BULLET

	CAPACITY	FLUID USED
Crankcase	14 Quarts 15 Quarts with filter	* John Deere TORQ-GARD SUPREME * John Deere UNI-GARD * API Service Classification CG-4 * API Service Classification CF-4 * ACEA Specification E3 * ACEA Specification E2 * CCHC Specification D5 * CCHC Specification D4
Hydraulic Oil	38 Gallons	Chevron ISO-46
Fuel Tank	38 Gallons	Grade No. 1-0 or No. 2-0 fuel, as defined by ASTH Designation 0975 for diesel fuels.
Drive Axle	20 Quarts	Specification ESN-M2C134-C
Cooling System	4 Gallons	2 Gallons Clean Water & 2 Gallons Antifreeze



POULTRY FIELD LOADER