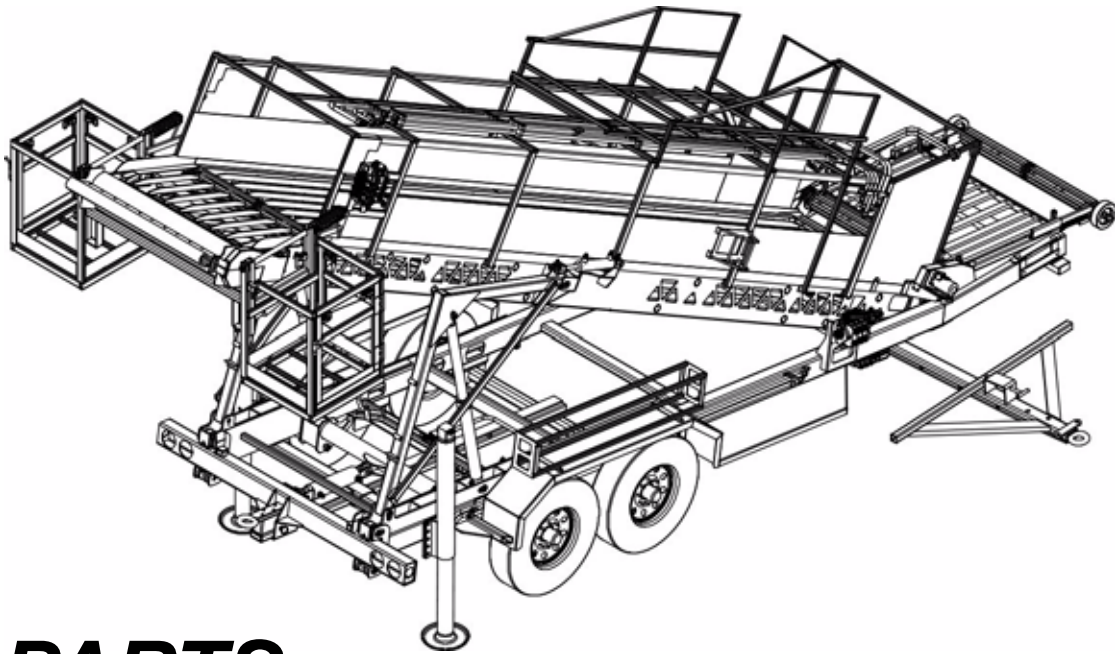


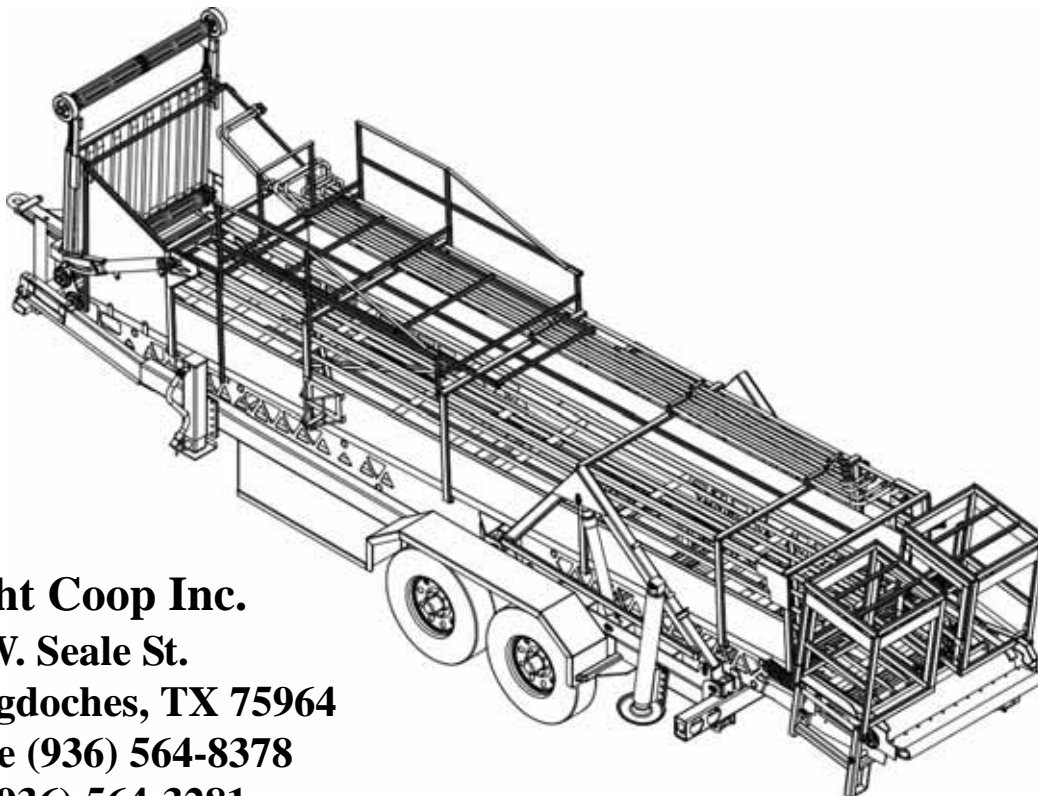


E - Z CLEAN TURKEY HARVESTER

20' / 24' Standard & Reverse Tongue



PARTS CATALOG



Bright Coop Inc.
803 W. Seale St.
Nacogdoches, TX 75964
Phone (936) 564-8378
Fax (936) 564-3281
Info@brightcoop.com

Printed in the U.S.A 3/13/2014
BC#790-00673

Phone (936) 564-8378 & ask for Parts to Order

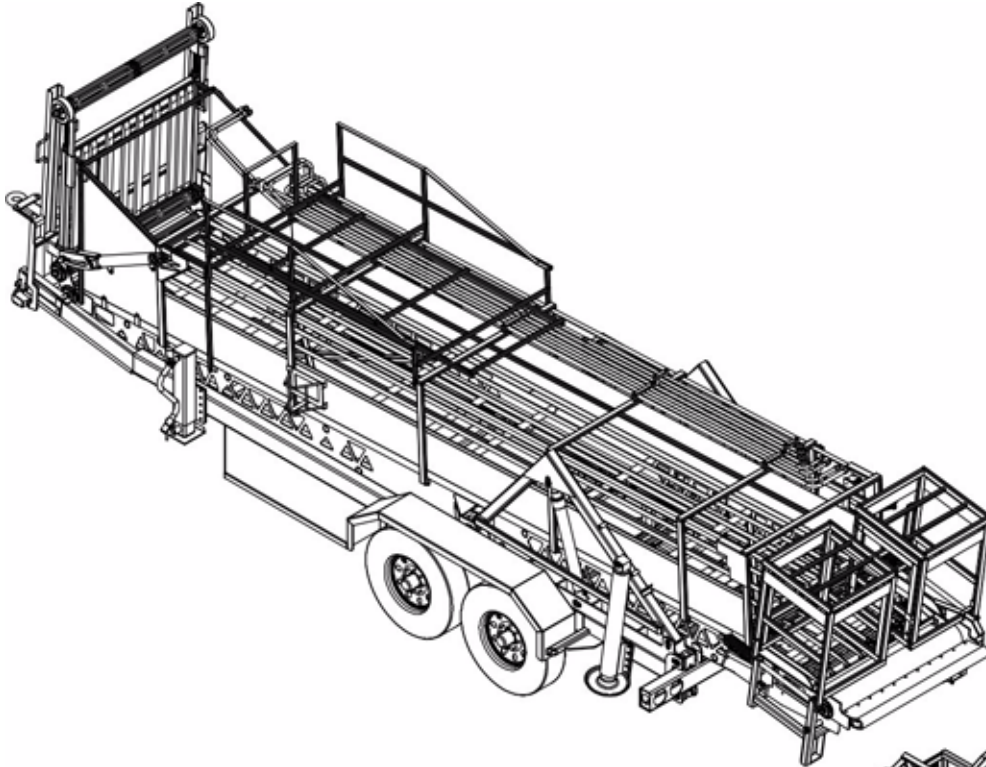


E - Z CLEAN TURKEY HARVESTER

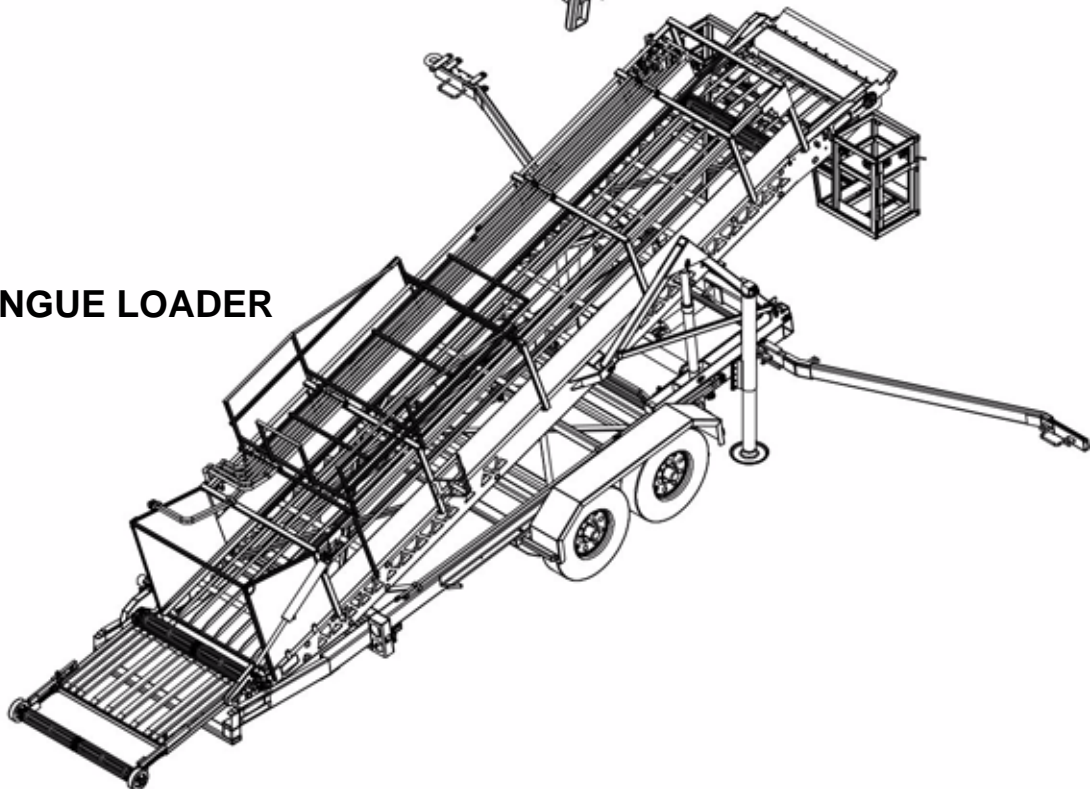
20' / 24' Standard & Reverse Tongue

CONFIGURATION / MODELS

STANDARD LOADER



REVERSE TONGUE LOADER



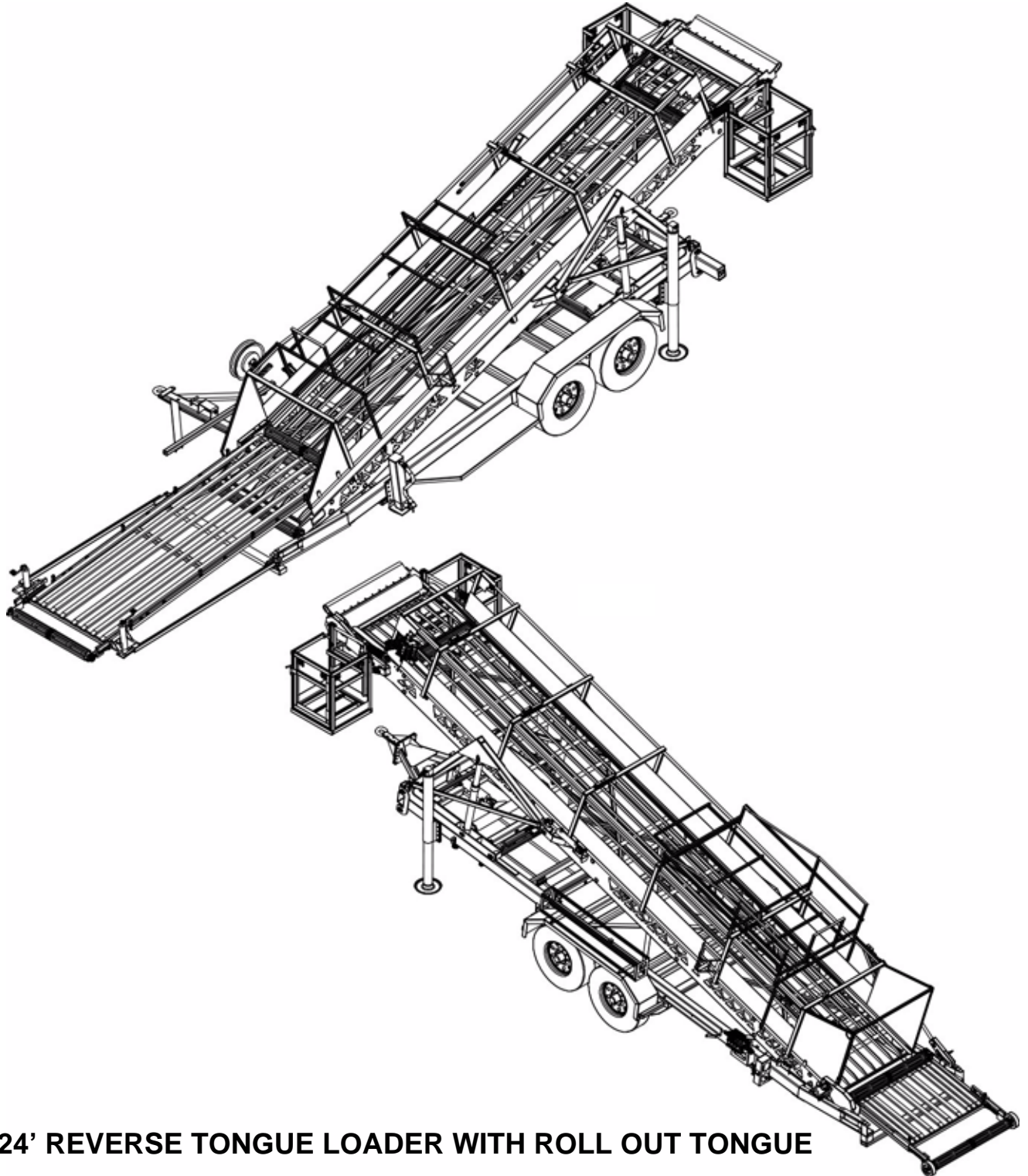


E - Z CLEAN TURKEY HARVESTER

20' / 24' Standard & Reverse Tongue

CONFIGURATION / MODELS

STANDARD LOADER WITH PRE-LOADER



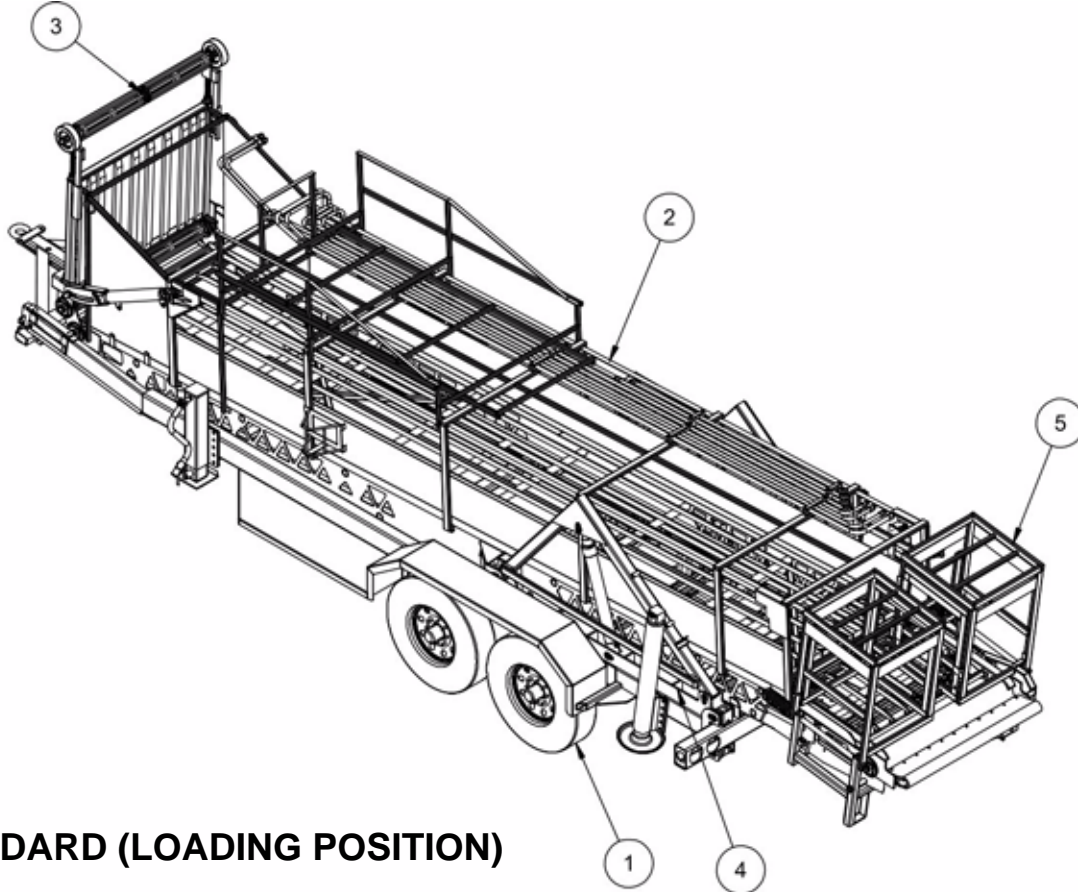
24' REVERSE TONGUE LOADER WITH ROLL OUT TONGUE



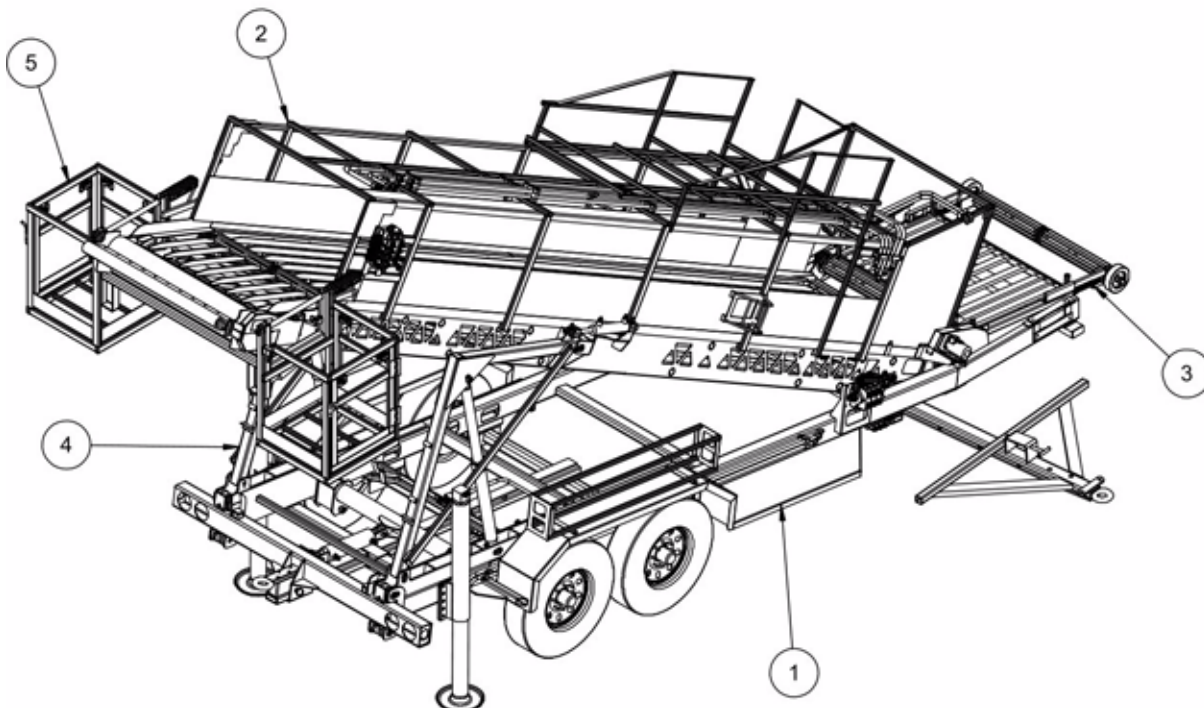
E - Z CLEAN TURKEY HARVESTER

20' / 24' Standard & Reverse Tongue

STANDARD (TRAVEL POSITION)



STANDARD (LOADING POSITION)





Turkey Harvester

20' / 24' Standard & Reverse Tongue

Tab Indexes

Parts Catalog

1	SECTION 1 TRAILER FRAME
2	SECTION 2 MAIN CONVEYOR
3	SECTION 3 PRE-LOADER / PICKUP CONVEYOR
4	SECTION 4 A-FRAME / SLIDE ASSEMBLY
5	SECTION 5 COOPER'S PLATFORM
6	SECTION 6 HYDRAULIC COMPONENTS
7	SECTION 7 CORRAL PANELS
8	SECTION 8 ELECTRICAL
9	SECTION 9 DECALS & PLACARDS
10	SECTION 10 SCHEMATICS

Bright Coop Inc.
803 W. Seale St.
Nacogdoches, TX 75964
Phone (936) 564-8378
Fax (936) 564-3281
Info@brightcoop.com



Turkey Harvester

20' / 24' Standard & Reverse Tongue



Turkey Harvester

20' / 24' Standard & Reverse Tongue

Section 1

TRAILER FRAME

Contents

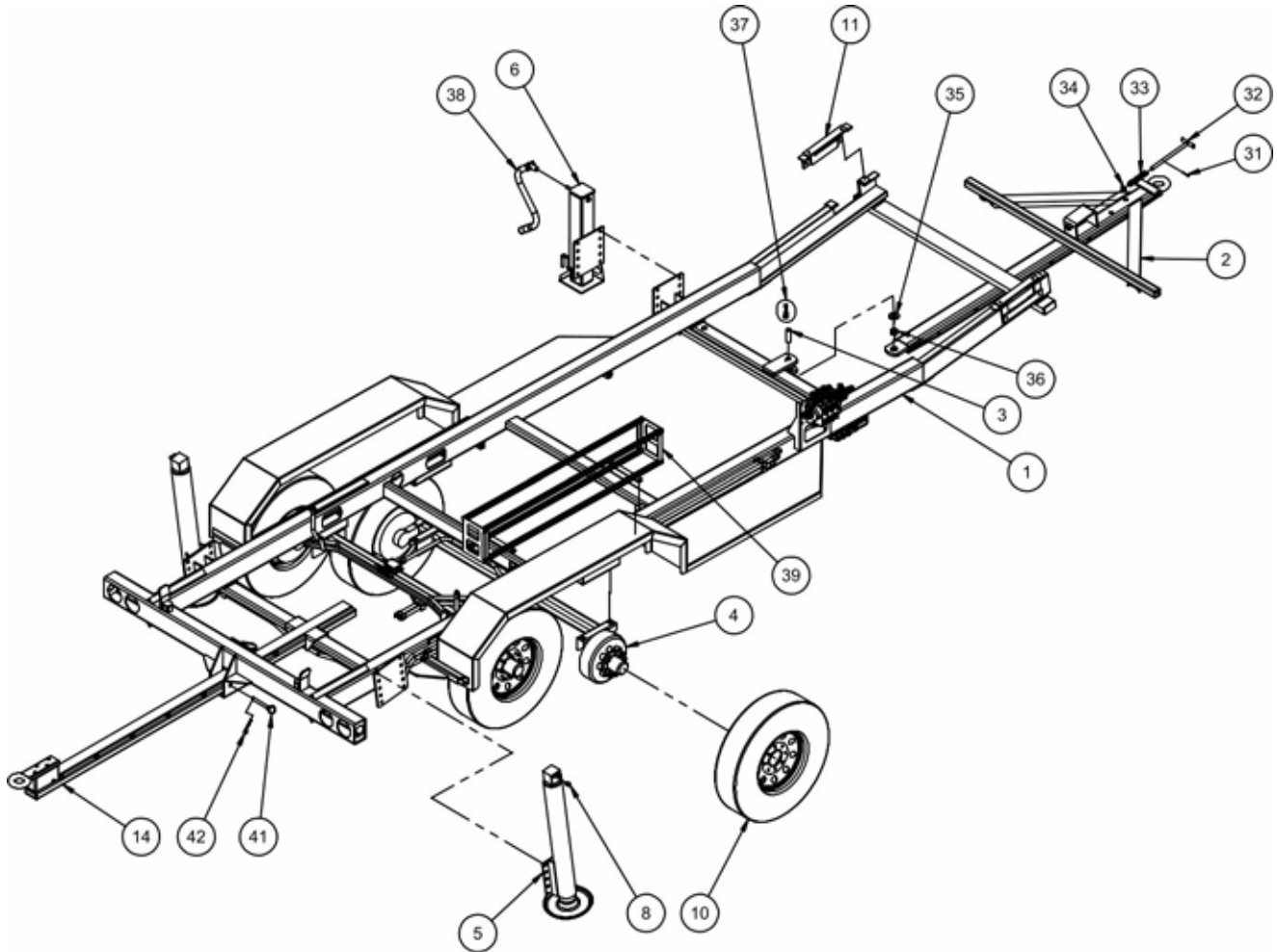
Standard Trailer Frame - - - - -	2-3
Pipe Detail for 20' Standard Trailer Frame - - - - -	4-5
Pipe Detail for 24' Standard Trailer Frame - - - - -	6-7
Reverse Tongue Trailer Frame- - - - -	8-9
Pipe Detail for 20' Reverse Tongue Trailer Frame - - - - -	10-11
Pipe Detail for 24' Reverse Tongue Trailer Frame - - - - -	12-13
Roll Out Tongue Assembly - - - - -	14-15



Turkey Harvester

20' / 24' Standard & Reverse Tongue

STANDARD TRAILER FRAME (20':790-10100), (24':790-30100)





Turkey Harvester

20' / 24' Standard & Reverse Tongue

STANDARD TRAILER FRAME (20':790-10100), (24':790-30100)

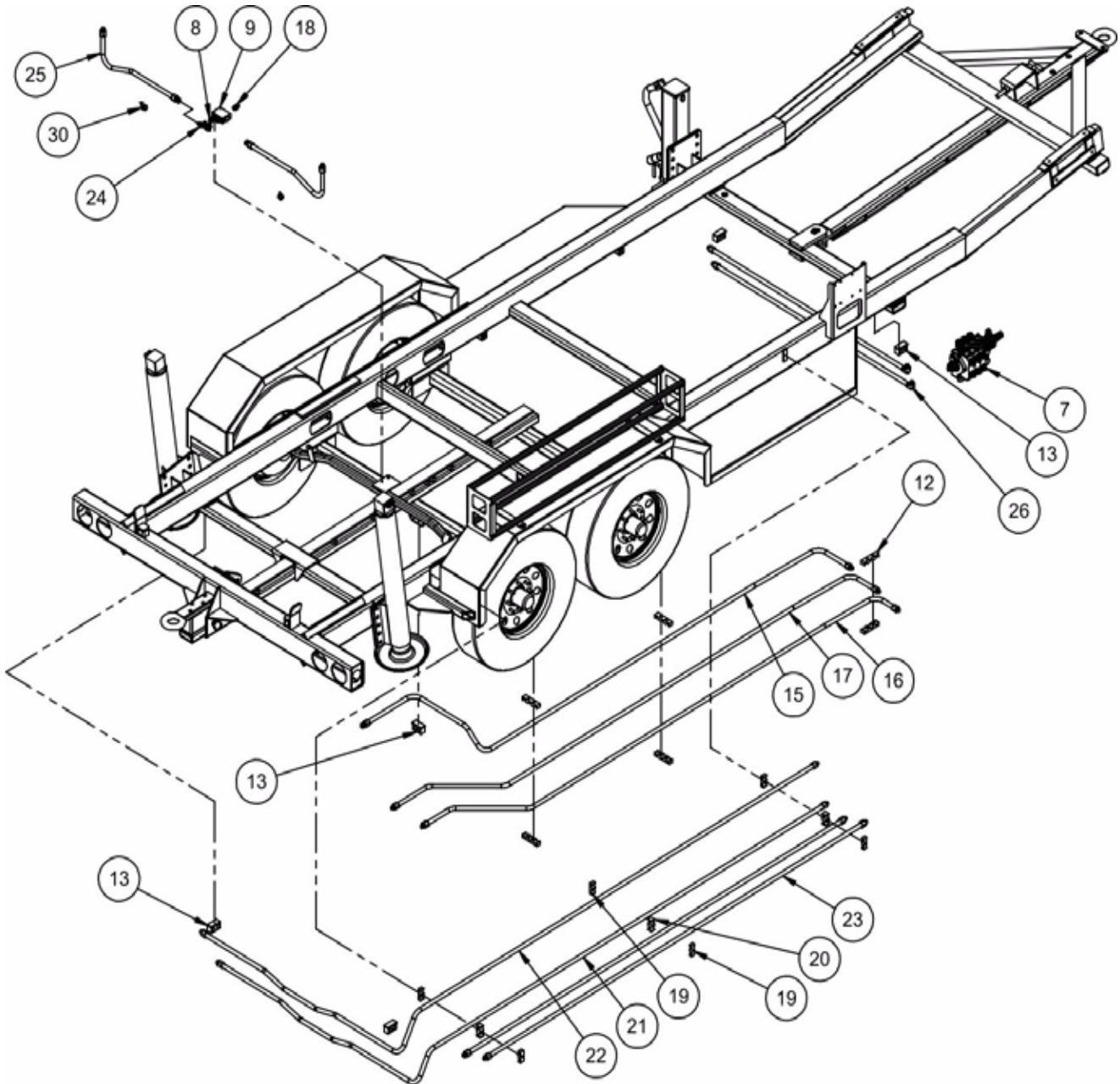
ITEM	PART NUMBER	DESCRIPTION	QTY	MODEL OR SERIAL #
1	790-10118	TRAILER FRAME WELDMENT (20' LOADER)	1	
	790-30101	TRAILER FRAME WELDMENT (24' LOADER)	1	
2	790-09007	TRAILER TONGUE (STD)	1	
3	790-09009	TRAILER TONGUE PIN	1	
4	730-02197	TRAILER AXLE	2	
5	790-00164	HEAVY DUTY HYDRAULIC LEG (2014 AND NEWER)	2	
	730-02223	HYDRAULIC LEG WITH FOOT PAD (PRIOR TO 2014)	2	
	630-00029	SEAL KIT FOR ABOVE (730-02223)	1	
	730-02224	FOOT PAD ONLY FOR 730-02223	1	
6	790-10112	MANUAL DROP LEG WITH ATTACHMENT PLATE (2014 AND NEWER)	1	
	730-02213	DROP LEG WITHOUT ATTACHMENT PLATE	1	
8	330-00044	STRAIGHT ADAPTOR SAE #6 MALE X JIC #8 MALE	6	
10	790-10117	TURKEY LOADER TIRE / WHEEL ASSEMBLY	4	
	730-02198	WHEEL ONLY	1	
11	790-10101	ACCESS DOOR ASSEMBLY	2	
14	790-00086	HOUSE TONGUE	1	
31		3/16" X 2" ROLL PIN	1	
32	790-10302	TONGUE LATCH PIN	1	
33	790-00377	TONGUE LATCH SPRING	1	
34		3/4" SAE FLATWASHER	1	
35	790-00374	SPHERICAL BEARING RETAINER	1	
36	030-00080	SPHERICAL BEARING	1	
37		1/2"-13 X 1" LONG HEX BOLT, LOCKWASHER, FLAT-WASHER	1	
38	730-02216	CRANK HANDLE	1	
39	790-10119	STAKE BASKET	1	
41	790-00703	HOUSE TONGUE PIN	1	
42	210-00744	HAIR PIN COTTER	1	



Turkey Harvester

20' / 24' Standard & Reverse Tongue

PIPE DETAIL FOR 20' STANDARD TRAILER FRAME





Turkey Harvester

20' / 24' Standard & Reverse Tongue

PIPE DETAIL FOR 20' STANDARD TRAILER FRAME

ITEM	PART NUMBER	DESCRIPTION	QTY	MODEL OR SERIAL #
7	790-00453.3	ACCESSORY VALVE ASSEMBLY (SEE SECTION 6-20)	1	
8	330-00044	STRAIGHT ADAPTOR SAE #6 MALE X JIC #8 MALE	6	
9		FLOW DIVIDER	1	
	330-00151	FLOW DIVIDER HOUSING ONLY	1	
	330-00148	FLOW DIVIDER CARTRIDGE ONLY	1	
12	790-00430	THREE PIPE MOUNT	6	
13	330-00265	HOSE HOLDER BLOCK	6	
15	790-10120	FLOW DIVIDER PIPE	1	
16	790-10121	SLIDE PIPE 1	1	
17	790-10122	SLIDE PIPE 2	1	
18	330-00046	STRAIGHT ADAPTOR SAE #8 MALE X JIC #8 MALE	1	
19	790-00432	SMALL DOUBLE PIPE MOUNT CAP	4	
20	790-00433	SMALL DOUBLE PIPE MOUNT CENTER	2	
21	790-10125	CROSSOVER DROP LEG PIPE 2	1	
22	790-10124	CROSSOVER DROP LEG PIPE 1	1	
23	790-10123	VALVE SIDE DROP LEG PIPE	2	
24	330-00129	90 DEG CONNECTOR JIC #8 FEMALE X JIC #8 MALE	2	
25	790-10130	LIFT CYLINDER PIPE	2	
26	790-10127	PICKUP CONVEYOR PIPE	2	
30	330-00686	CLAMP FOR 1/2" HOSE	2	



Turkey Harvester

20' / 24' Standard & Reverse Tongue

PIPE DETAIL FOR 24' STANDARD TRAILER FRAME



Turkey Harvester

20' / 24' Standard & Reverse Tongue

PIPE DETAIL FOR 24' STANDARD TRAILER FRAME

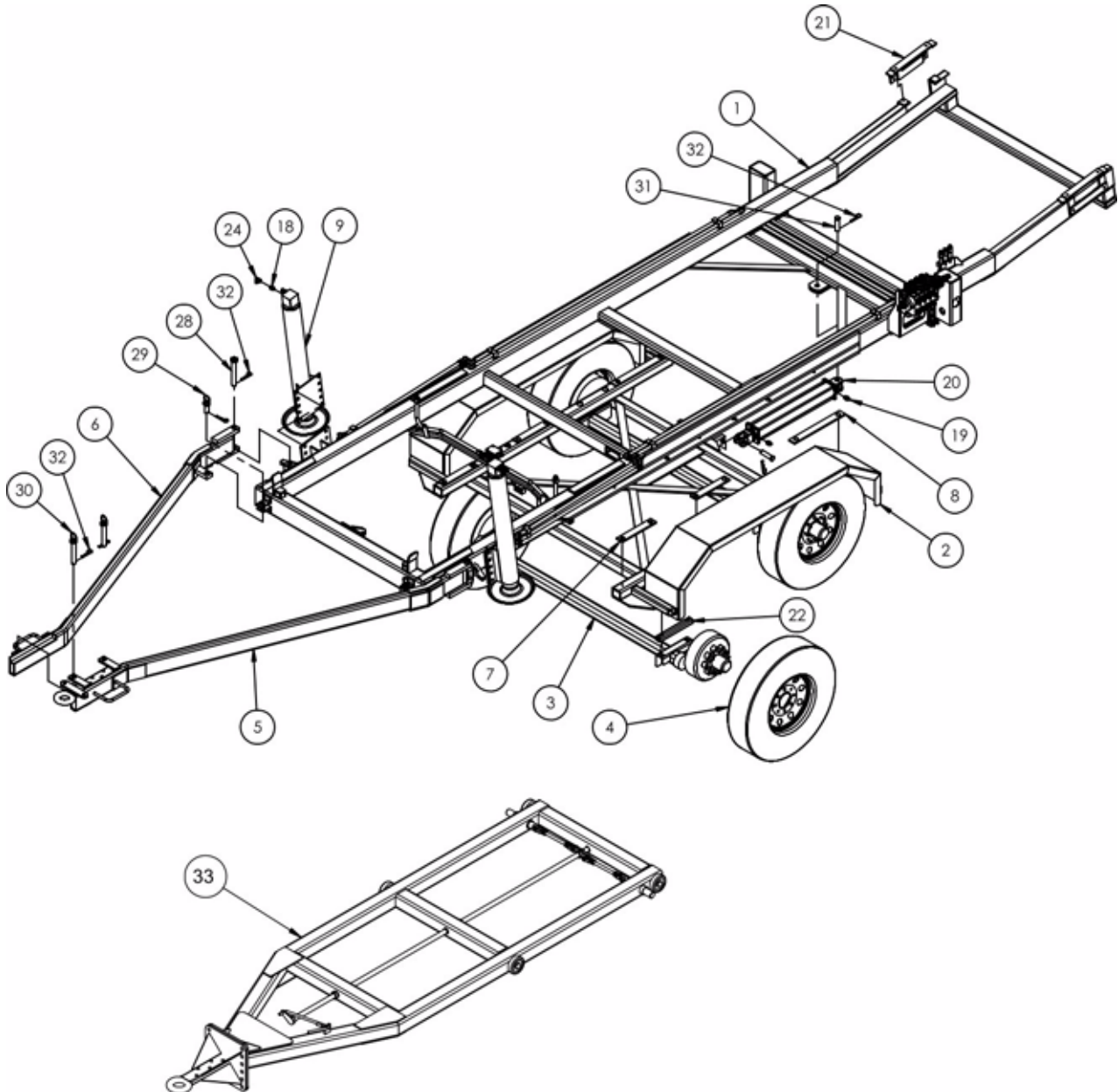
ITEM	PART NUMBER	DESCRIPTION	QTY	MODEL OR SERIAL #



Turkey Harvester

20' / 24' Standard & Reverse Tongue

REVERSE TONGUE TRAILER FRAME (20' SPLIT: 790-20100), (24' SPLIT: 790-40100S), (24' ROLL OUT: 790-40100R)





Turkey Harvester

20' / 24' Standard & Reverse Tongue

REVERSE TONGUE TRAILER FRAME (20' SPLIT: 790-20100), (24' SPLIT: 790-40100S), (24' ROLL OUT: 790-40100R)

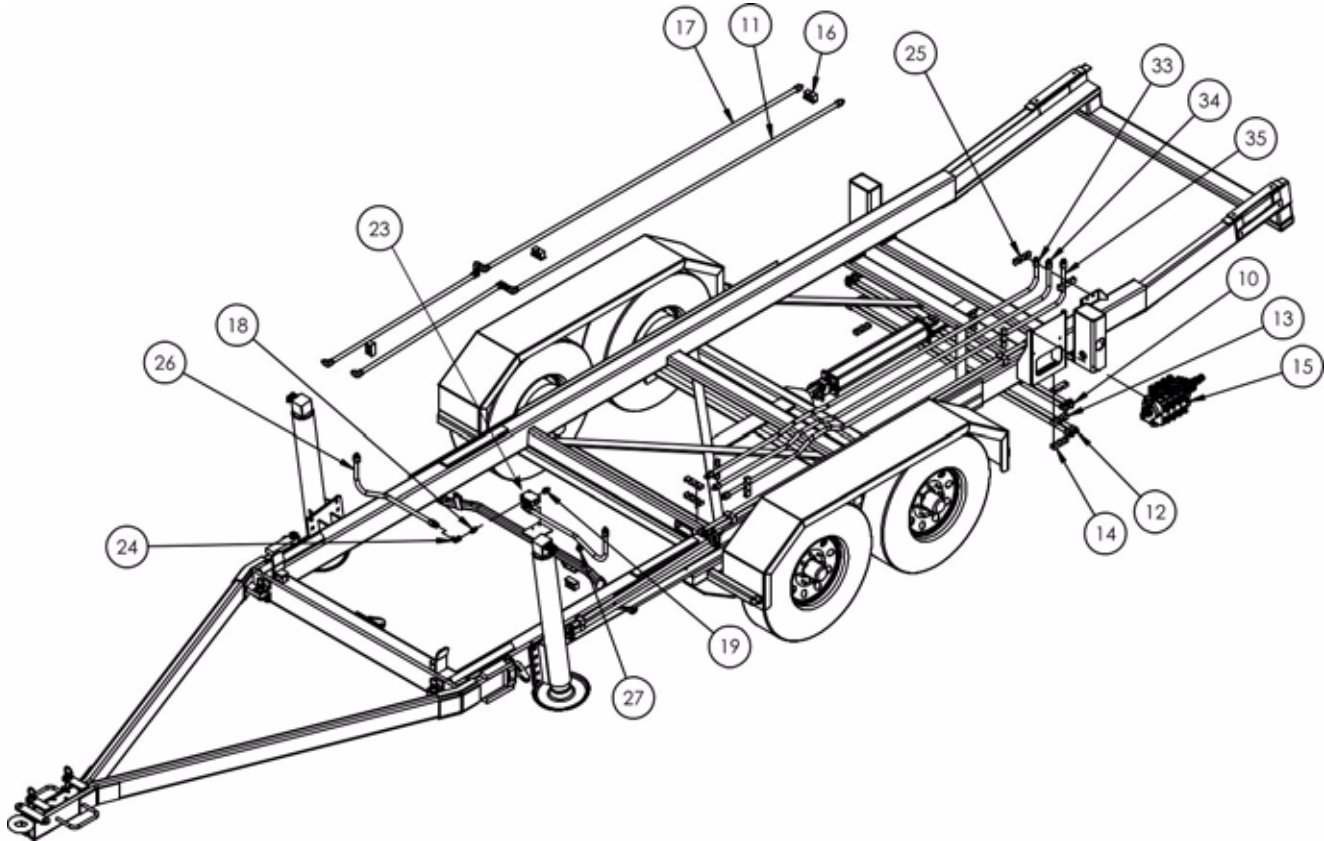
ITEM	PART NUMBER	DESCRIPTION	QTY	MODEL OR SERIAL #
1	790-20101	REVERSE TONGUE TRAILER FRAME WELDMENT (20' LOADER)	1	
	790-40102	REVERSE TONGUE TRAILER FRAME WELDMENT (24' LOADER)	1	
	790-40101	REVERSE TONGUE TRAILER FRAME WELDMENT (24' LOADER WITH ROLL OUT TONGUE)	1	
2	790-20201	SLIDING TANDEM WELDMENT	1	
3	730-02411	TRAILER AXLE	2	
	730-02415	AXLE WITH HYDRAULIC BRAKES	2	
4	790-10117	TURKEY LOADER TIRE / WHEEL ASSEMBLY	4	
	730-02198	WHEEL ONLY	1	
5	790-20301L	DRAWBAR LEFT SIDE	1	
	790-20302L	DRAWBAR FOR HYDRAULIC BRAKES LEFT (INCLUDES ACTUATOR)	1	
	730-02416	HYDRAULIC BRAKE ACTUATOR ONLY	1	
6	790-20301R	DRAWBAR RIGHT SIDE	1	
	790-20302R	DRAWBAR FOR HYDRAULIC BRAKES RIGHT	1	
7	790-00455	PLASTIC FOR SLIDING TANDEMS	4	
8	790-00456	LONG PLASTIC FOR SLIDING TANDEMS	2	
9	790-00164	HEAVY DUTY HYDRAULIC LEG (2014 AND NEWER)	2	
	730-02223	HYDRAULIC LEG (PRIOR TO 2014)	1	
	630-00029	SEAL KIT FOR 790-02223	1	
	730-02224	FOOT PAD ONLY FOR 730-02223	1	
18	330-00044	STRAIGHT ADAPTOR SAE #6 MALE X JIC #8 MALE	6	
19	330-00046	STRAIGHT ADAPTOR SAE #8 MALE X JIC #8 MALE	3	
20	170-00054	TANDEM SLIDE CYLINDER	1	
	630-00027	SEAL KIT OR 170-00054	1	
21	790-10101	ACCESS DOOR ASSEMBLY	2	
22	790-00517	REVERSE TONGUE AXLE SPACER	4	
28	790-00637	REVERSE TONGUE SWING PIN	2	
29	790-00638	REVERSE TONGUE LOCK PIN	2	
30	790-00639	REVERSE TONGUE LONG LOCK PIN	2	
31	790-00560	CLEVIS PIN	2	
32	210-00744	HAIR PIN COTTER 3/16" X 3-5/8"	8	
33	790-40300	ROLL OUT TONGUE ASSEMBLY (SEE NEXT SECTION FOR DETAILS)		



Turkey Harvester

20' / 24' Standard & Reverse Tongue

PIPE DETAIL FOR 20' REVERSE TONGUE FRAME





Turkey Harvester

20' / 24' Standard & Reverse Tongue

PIPE DETAIL FOR 20' REVERSE TONGUE FRAME

ITEM	PART NUMBER	DESCRIPTION	QTY	MODEL OR SERIAL #
10	790-20103	62" CROSSOVER PIPE	2	
11	790-20102	INNER FRAME TOP PIPE	2	
12	790-20104	64" CROSSOVER PIPE	2	
13	790-00494	CROSSOVER PIPE BLOCK	2	
14	790-00495	CROSSOVER PIPE BLOCK CAP	4	
15	790-00453.4	ACCESSORY VALVE (SEE SECTION 6-16)	1	
16	330-00265	HOSE HOLDER BLOCK	8	
17	790-20105	OUTER FRAME TOP PIPE	1	
18	330-00044	STRAIGHT ADAPTOR SAE #6 MALE X JIC #8 MALE	6	
19	330-00046	STRAIGHT ADAPTOR SAE #8 MALE X JIC #8 MALE	3	
23		FLOW DIVIDER	1	
	330-00151	FLOW DIVIDER HOUSING ONLY	1	
	330-00148	FLOW DIVIDER CARTRIDGE ONLY	1	
24	330-00129	90° DEG CONNECTOR JIC #8 FEMALE X JIC #8 MALE	6	
25	790-00430	THREE PIPE MOUNT	8	
26	790-10130	LIFT CYLINDER PIPE	2	
27	330-00686	CLAMP FOR 1/2" HOSE	2	
33	790-20106	REVERSE TONGUE FLOW DIVIDER PIPE	1	
34	790-00107	REVERSE TONGUE SLIDE PIPE 1	1	
35	790-20108	REVERSE TONGUE SLIDE PIPE 2	1	



Turkey Harvester

20' / 24' Standard & Reverse Tongue

PIPE DETAIL FOR 24' REVERSE TONGUE FRAME



Turkey Harvester

20' / 24' Standard & Reverse Tongue

PIPE DETAIL FOR 24' REVERSE TONGUE FRAME

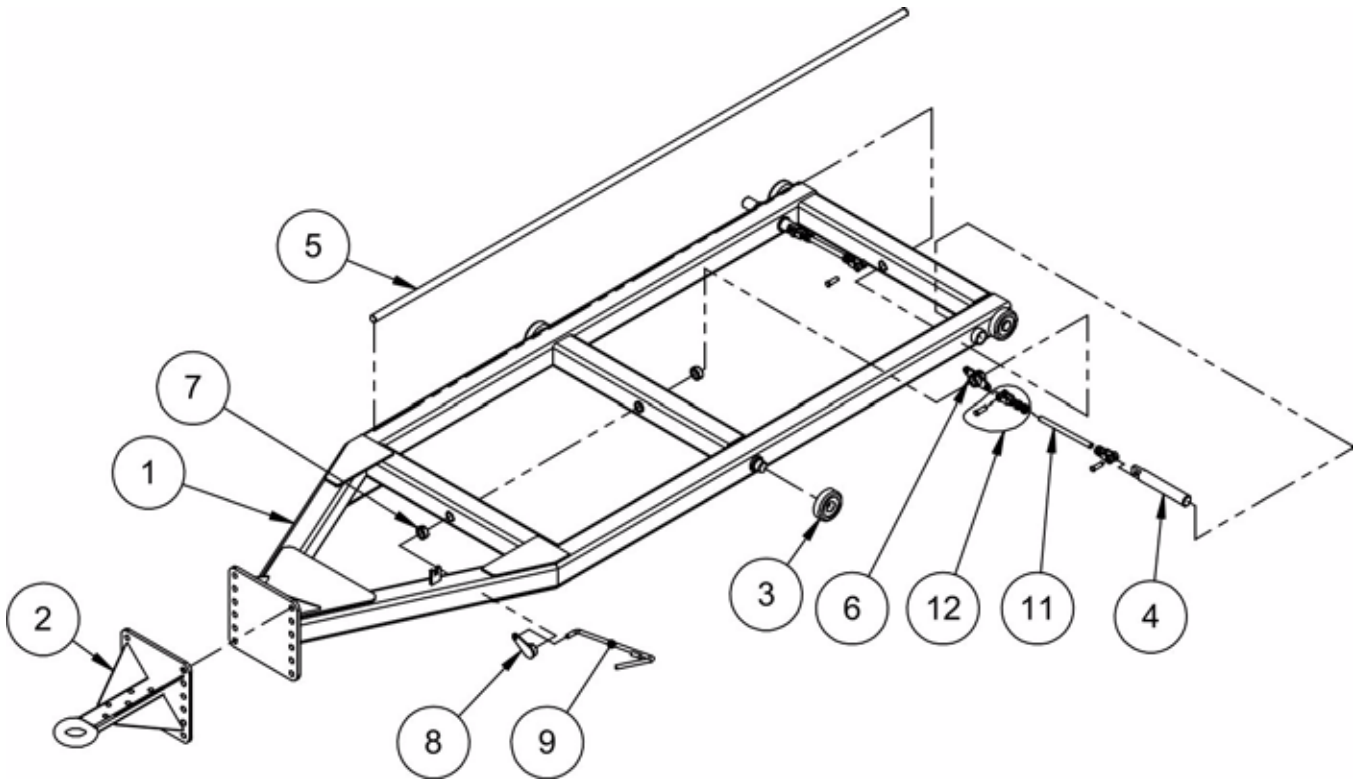
ITEM	PART NUMBER	DESCRIPTION	QTY	MODEL OR SERIAL #



Turkey Harvester

20' / 24' Standard & Reverse Tongue

ROLL OUT TONGUE ASSEMBLY (790-40300)





Turkey Harvester

20' / 24' Standard & Reverse Tongue

ROLL OUT TONGUE ASSEMBLY (790-40300)

ITEM	PART NUMBER	DESCRIPTION	QTY	MODEL OR SERIAL #
1	790-40301	ROLL OUT TONGUE WELDMENT	1	
2	790-40302	ROLL OUT TONGUE DRAWBAR	1	
3	098-00357	MAST ROLLER	4	
4	790-00662	ROLL OUT TONGUE LOCK PIN	2	
5	790-00661	ROLL OUT TONGUE ROTATOR SHAFT	1	
6	790-00664	ROLL OUT TONGUE ROTATOR PLATE	1	
7	370-00005	SET COLLAR 1" ZINC PLATED	2	
8	790-00663	ROLL OUT TONGUE CRANK LINK	1	
9	790-00665	ROLL OUT TONGUE CRANK HANDLE	1	
10		ROLL OUT TONGUE SPRING (NOT SHOWN)	1	
11	790-00671	5/8"-18 X 9" THREADED ROD	2	
12	790-00670	YOKE WITH PIN AND NUTS	4	



Turkey Harvester

20' / 24' Standard & Reverse Tongue



Turkey Harvester

20' / 24' Standard & Reverse Tongue

Section 2

Main Conveyor

Contents

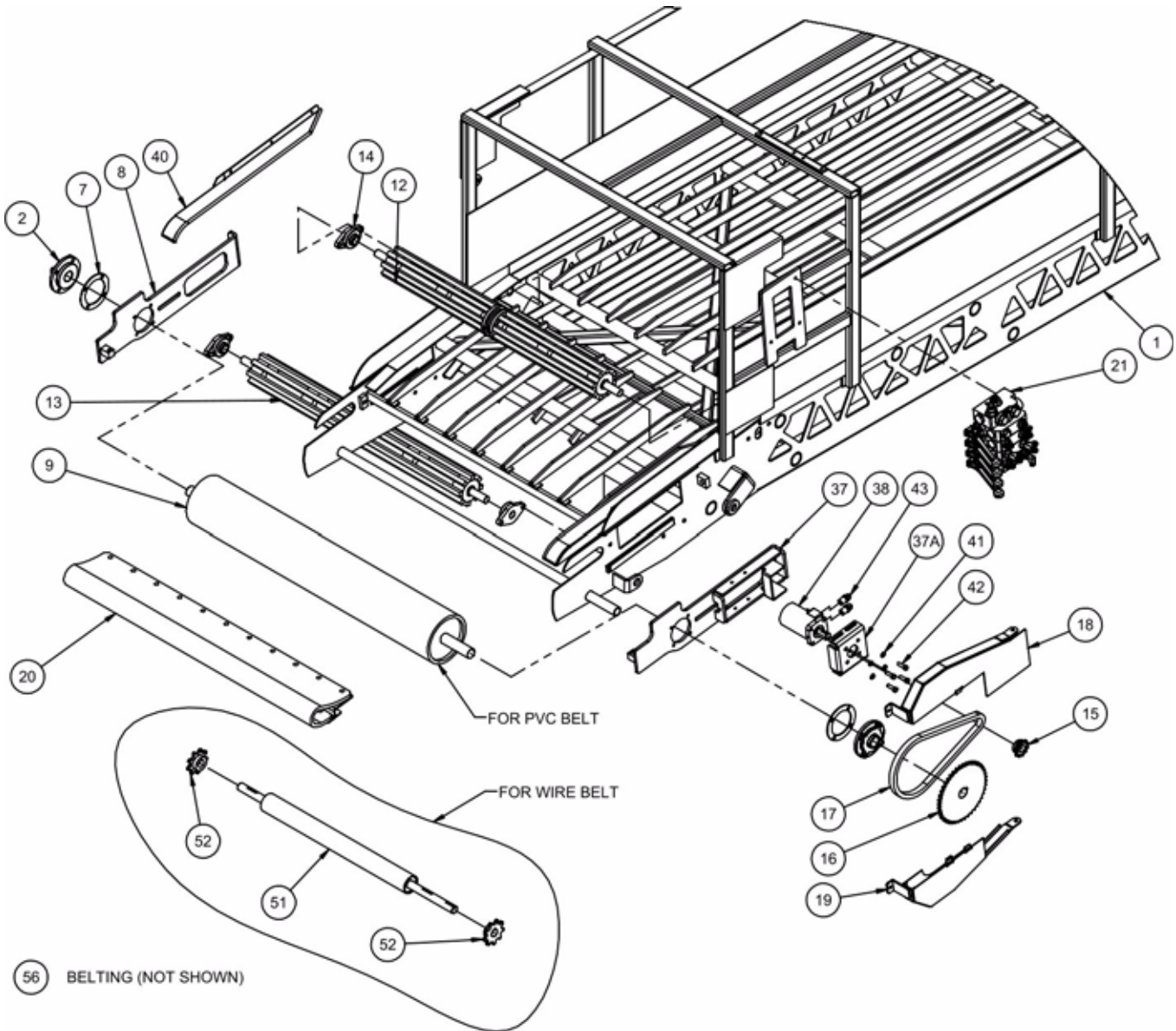
Main Conveyor Drive End - - - - -	2-3
Main Conveyor Idler - - - - -	4-5
20' Main Conveyor Top Piping - - - - -	6-7
24' Main Conveyor Top Piping - - - - -	8-9



Turkey Harvester

20' / 24' Standard & Reverse Tongue

MAIN CONVEYOR ASSEMBLY DRIVE END





Turkey Harvester

20' / 24' Standard & Reverse Tongue

MAIN CONVEYOR ASSEMBLY DRIVE END

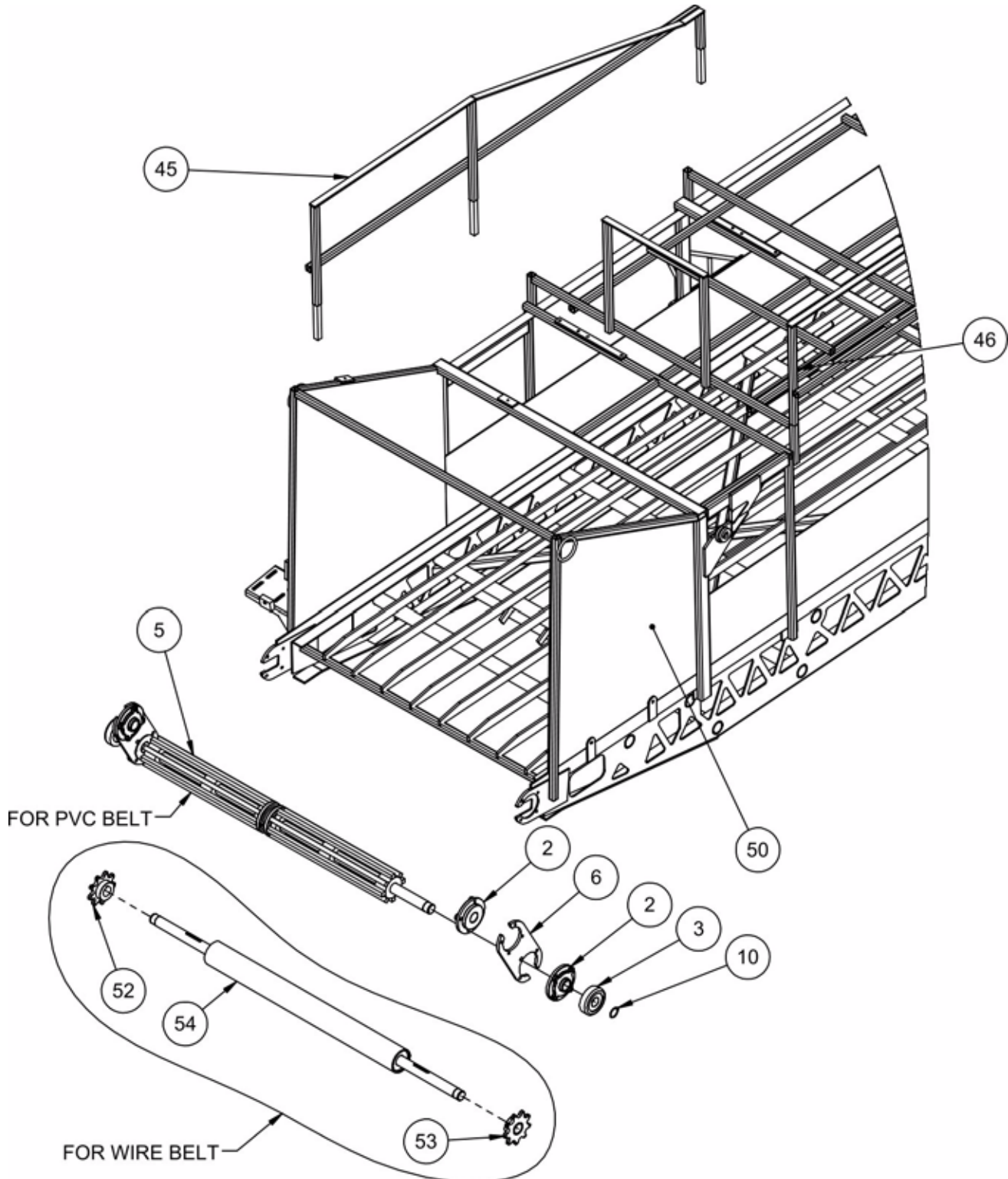
ITEM	PART NUMBER	DESCRIPTION	QTY	MODEL OR SERIAL #
1	790-10503	20' MAIN CONVEYOR WELDMENT	1	
	790-30501	24' MAIN CONVEYOR WELDMENT	1	
2	030-00019	PILOTED FLANGE BEARING 1-7/16"	6	
7	790-00204	BEARING SPACER	2	
8	790-00069	MAIN BELT TAKE UP PLATE	1	
9	790-00123	VULCANIZED DRIVE ROLLER (PVC BELT)	1	
12	790-00081	MAIN CONVEYOR TOP BREAK ROLLER (PVC)	1	
	790-00082	MAIN CONVEYOR TOP BREAK ROLLER (WIRE BELT)		
13	790-00082.1	MAIN CONVEYOR BOTTOM BREAK ROLLER (PVC)	1	
	790-00082	MAIN CONVEYOR BOTTOM BREAK ROLLER (WIRE BELT)		
14	030-00044	FLANGE BEARING 1"	4	
15	690-00031	50BS11 SPROCKET 1" BORE	1	
16	690-00032	50BS44 SPROCKET 1-7/16" BORE	1	
17	110-00017	#50 ROLLER CHAIN	1	
18	790-10505.2	MAIN CONVEYOR GUARD TOP	1	
19	790-10505.1	MAIN CONVEYOR GUARD BOTTOM	1	
20	790-00270	BUMPER WITH ONE PIECE FRAME	1	
21	790-00452	4 SECTION VALVE ASSEMBLY (SEE SECTION 6-22)	1	
37	790-00068	TAKE UP ASSEMBLY (MOTOR SIDE)	1	
37A	790-00196	MOTOR SUPPORT		
38	450-00023	CHAR-LYNN HYDRAULIC MOTOR #7 (PVC BELT)	1	
	450-00002	CHAR-LYNN HYDRAULIC MOTOR #4 (WIRE BELT)		
	630-00072	SEAL KIT FOR CHAR-LYNN MOTORS		
40	790-10506R	WIRE BELT SPROCKET GUARD RIGHT	1	
	790-10506L	WIRE BELT SPROCKET GUARD LEFT	1	
41		3/8" LOCKWASHER	4	
42		HEX BOLT 3/8" -16 X 1-1/4" LONG	4	
43	330-00020	STRAIGHT ADAPTOR (1/2" MALE NPT - 8 JIC)	2	
51	790-00080	DRIVE ROLLER FOR WIRE BELT	1	
52	690-00029	9 THOOTH SPROCKET FOR WIRE BELT	2	
56	050-00095	WIRE BELTING	1	
	050-00098	ROD RETAINER FOR WIRE BELT	1	
	050-00129	20' PVC BELT	1	
	050-00129.1	24' PVC BELT	1	



Turkey Harvester

20' / 24' Standard & Reverse Tongue

MAIN CONVEYOR IDLER END





Turkey Harvester

20' / 24' Standard & Reverse Tongue

MAIN CONVEYOR IDLER END

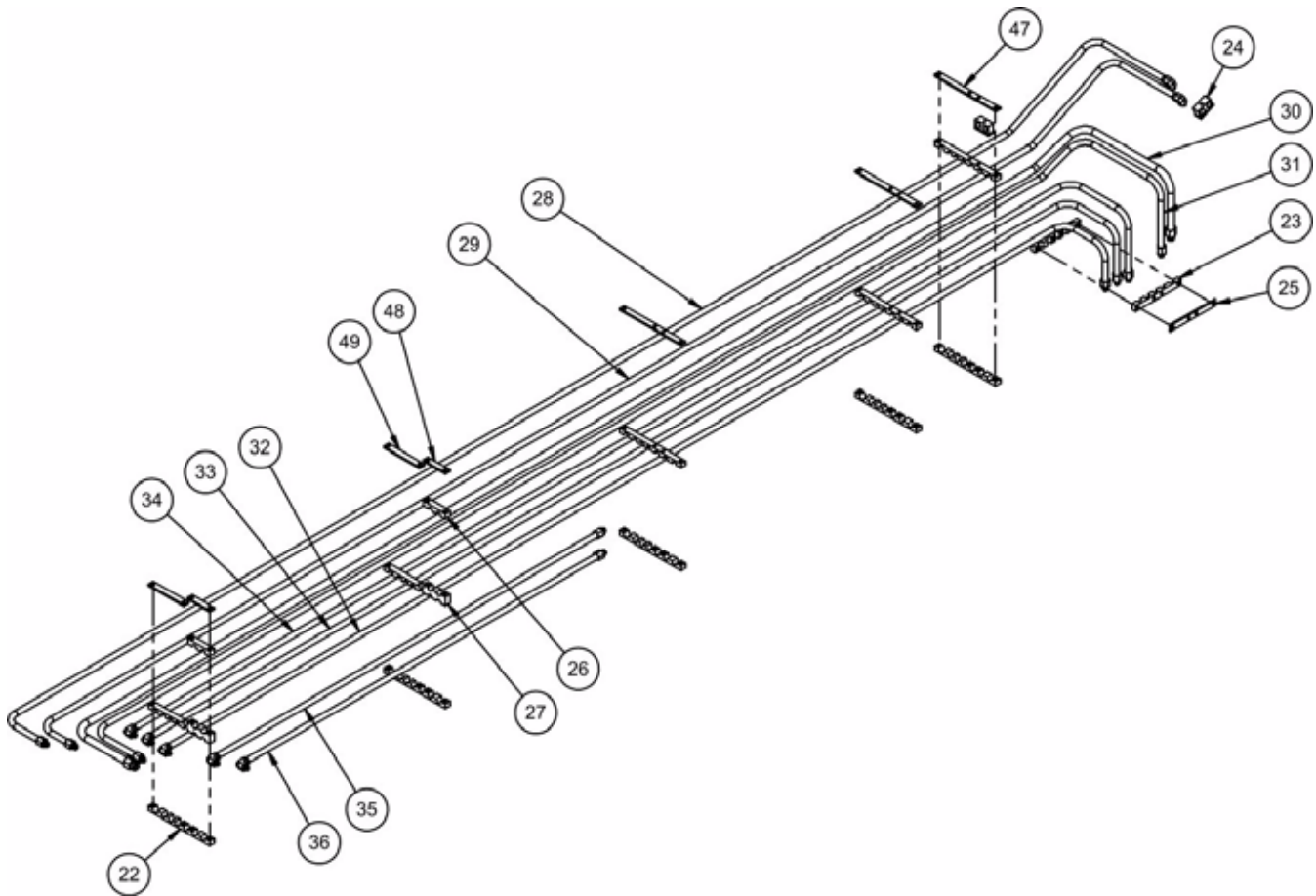
ITEM	PART NUMBER	DESCRIPTION	QTY	MODEL OR SERIAL #
2	030-00019	PILOTED FLANGE BEARING 1-7/16"	6	
3	098-00357	MAST ROLLER	2	
5	790-00084	MAIN CONVEYOR IDLER / PIVOT ROLLER	1	
6	L30002	PICKUP CONVEYOR ATTACHMENT PLATE	2	
10	098-00929	SNAP RING FOR 1-3/8" SHAFT	2	
45	790-10702L	CORRAL BOARD HOLDER SIDE	1	
46	790-10702R	CORRAL BOARD HOLDER SIDE	1	
50	790-00635	FIBERGLASS PANEL	2	
52	690-00029	9 THOOTH SPROCKET FOR WIRE BELT	2	
53	690-00029B	SPROCKET WITH BRONZE BUSHING		
54	790-00083	PIVOT ROLLER FOR WIRE BELT	1	



Turkey Harvester

20' / 24' Standard & Reverse Tongue

20' MAIN CONVEYOR TOP PIPING





Turkey Harvester

20' / 24' Standard & Reverse Tongue

20' MAIN CONVEYOR TOP PIPING

ITEM	PART NUMBER	DESCRIPTION	QTY	MODEL OR SERIAL #
22	790-00427	TOP PIPE MOUNT HALF	8	
23	790-00705	FIVE PIPE HOLDER	2	
24	330-00265	HOSE HOLDER BLOCK	2	
25	790-00706	FIVE PIPE HOLDER CAP	1	
26	790-00429	TOP PIPE MOUNT CAP	2	
27	790-00428	TOP PIPE MOUNT MIDDLE	2	
28	790-10508	PICKUP CONVEYOR PIPE 1	1	
29	790-10509	PICKUP CONVEYOR PIPE 2	1	
30	790-20502	MAIN CONVEYOR RETURN PIPE	1	
31	790-20501	MAIN CONVEYOR PRESSURE PIPE	1	
32	790-10510	SLIDE PIPE 1	1	
33	790-10511	SLIDE PIPE 2	1	
34	790-10512	A-FRAME PIPE	1	
35	790-10515	LEVELLER PIPE 1	1	
36	790-10516	LEVELLER PIPE 2	1	
47	790-00561	CAP FOR TOP PIPE BLOCK	3	
48	790-00562	CAP FOR STEPPED PIPE BLOCK 1	2	
49	790-00563	CAP FOR STEPPED PIPE BLOCK 2	2	



Turkey Harvester

20' / 24' Standard & Reverse Tongue

24' MAIN CONVEYOR TOP PIPING



Turkey Harvester

20' / 24' Standard & Reverse Tongue

24' MAIN CONVEYOR TOP PIPING

ITEM	PART NUMBER	DESCRIPTION	QTY	MODEL OR SERIAL #



Turkey Harvester

20' / 24' Standard & Reverse Tongue



Turkey Harvester

20' / 24' Standard & Reverse Tongue

Section 3

PRE-LOADER / PICKUP CONVEYOR

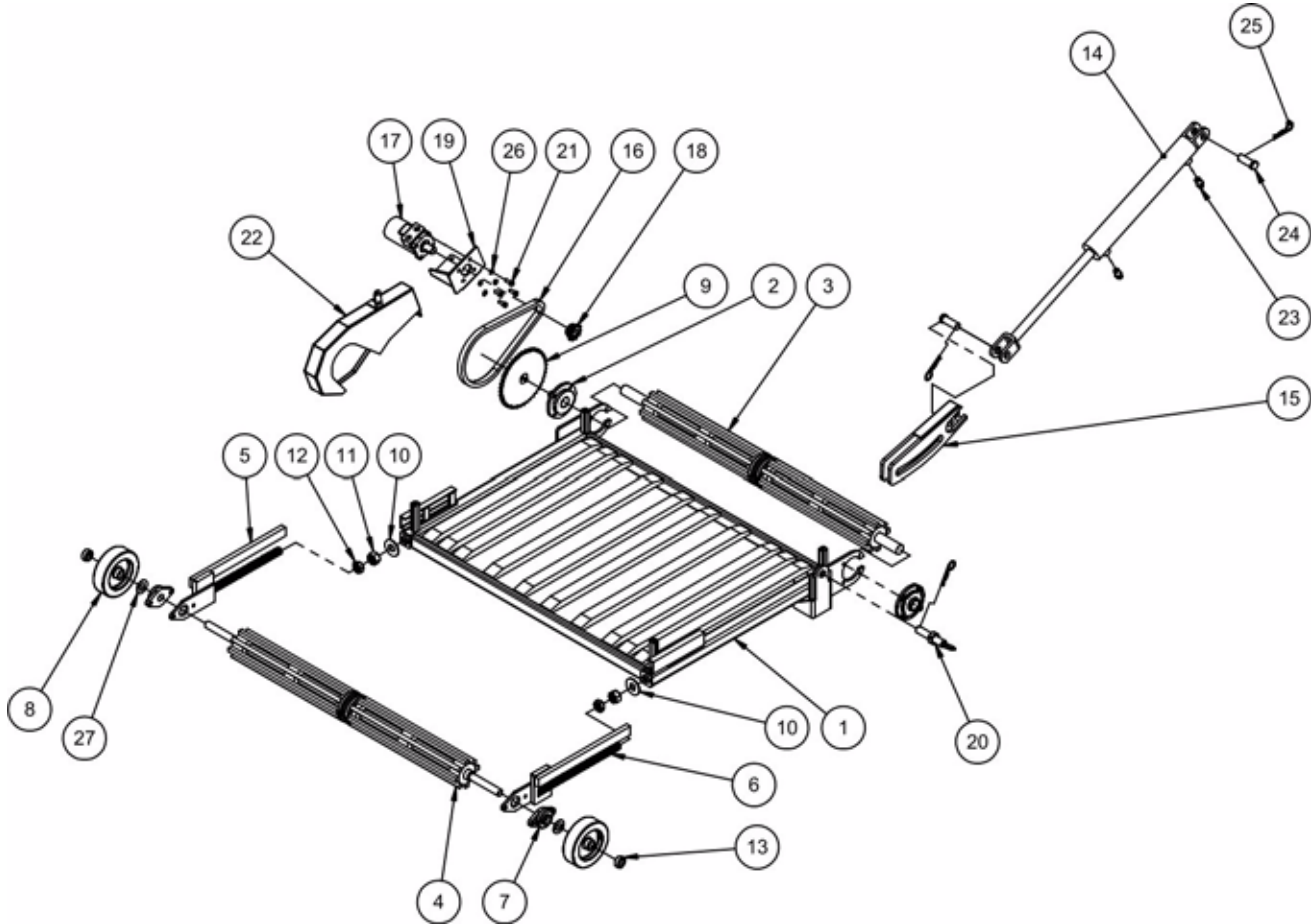
Pick Up Conveyor Assembly- - - - -	2-3
Pre-Loader Assembly - - - - -	4-5



Turkey Harvester

20' / 24' Standard & Reverse Tongue

PICKUP CONVEYOR ASSEMBLY (790-10800)



28 BELTING (NOT SHOWN)



Turkey Harvester

20' / 24' Standard & Reverse Tongue

PICKUP CONVEYOR ASSEMBLY (790-10800)

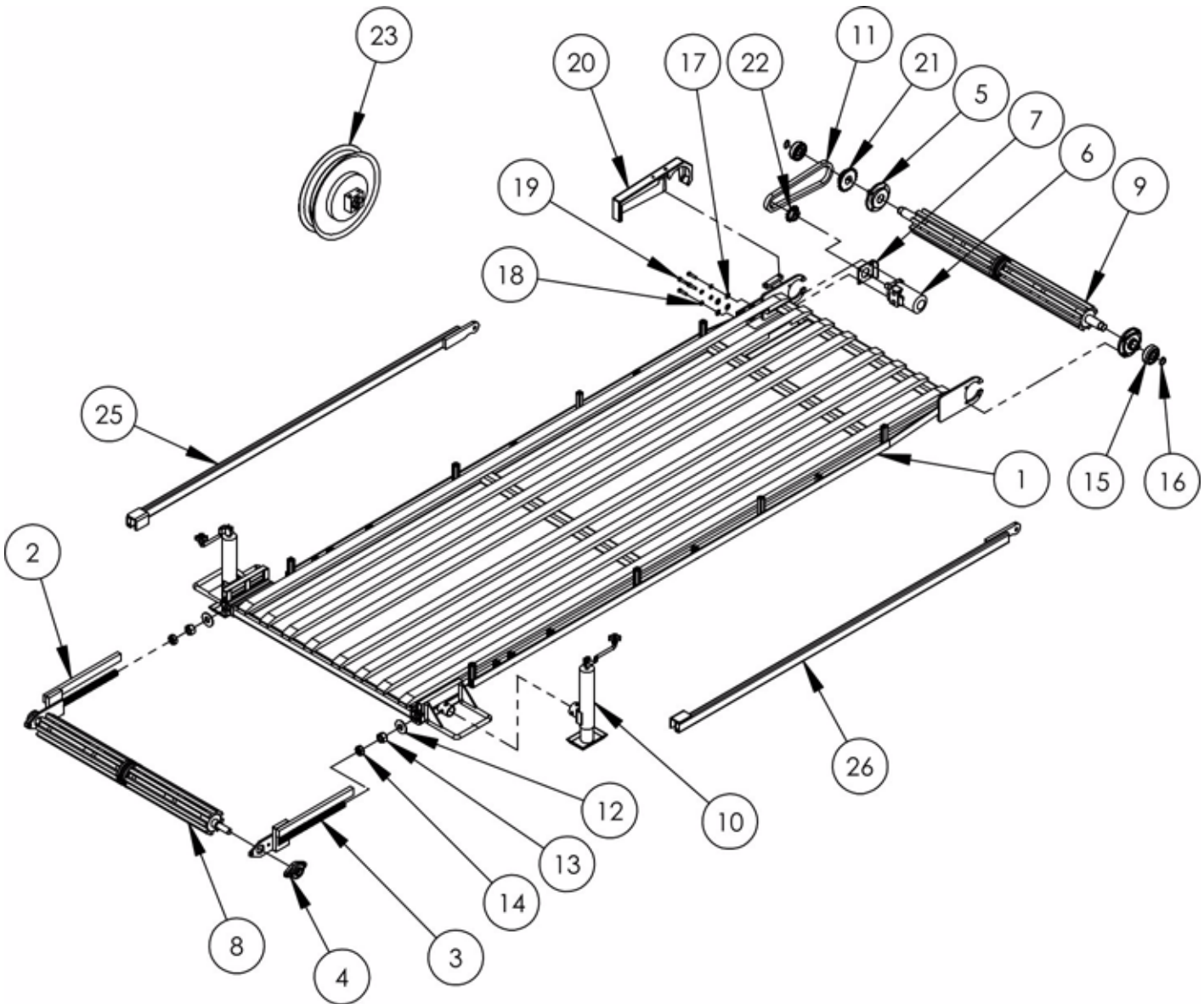
ITEM	PART NUMBER	DESCRIPTION	QTY	MODEL OR SERIAL #
1	790-10801	PICKUP CONVEYOR WELDMENT	1	
2	030-00019	PILOTED FLANGE BEARING 1-7/16"	2	
3	790-00071	4-1/2" PICKUP CONVEYOR DRIVE ROLLER	1	
4	790-00072	4-1/2" PICKUP CONVEYOR IDLER ROLLER	1	
	790-20802	3-1/2" PICKUP CONVEYOR IDLER ROLLER	1	
5	790-00070L	PICKUP CONVEYOR TAKE UP ASSEMBLY	1	
6	790-00070R	PICKUP CONVEYOR TAKE UP ASSEMBLY	1	
7	030-00044	FLANGE BEARING 1"	2	
8	430-00068	RUBBER WHEEL 2" X 7" (1" SHAFT)	2	
	430-00070	BEARING FOR 430-00068	1	
	430-00069	WASHER FOR BEARING 730-00070	2	
	790-00174	2" X 5" WHEEL (USED WITH 3-1/2" ROLLER)	2	
	790-00175	BUSHING FOR 790-00174	2	
9	690-00032	50BS44 SPROCKET 1-7/16"	1	
10	210-00280	1" USS FLATWASHER	4	
11	210-00159	1-8 NC HEX NUT	2	
12	210-00833	1" NC HEX JAM NUT	2	
13	370-00005	SET COLLAR 1" ZINC PLATED	2	
14	170-00030	PICKUP CONVEYOR LIFT CYLINDER	1	
	630-00021	SEAL KIT FOR CYLINDER # 170-00030	1	
15	790-00126	PICKUP CONVEYOR CYLINDER CLEVIS	1	
16	110-00017	#50 ROLLER CHAIN	3.5	
17	450-00023	CHAR-LYNN HYDRAULIC MOTOR #7 (USED WITH PVC BELT)	1	
	450-00002	CHAR-LYNN HYDRAULIC MOTOR #4 (USED WITH WIRE BELT)	1	
	630-00072	SEAL KIT FOR CHAR-LYNN HYDRAULIC MOTORS		
18	690-00031	50BS11 SPROCKET 1" BORE	1	
19	790-00223	PICKUP CONVEYOR MOTOR MOUNT	1	
20	790-00190	PICKUP CONVEYOR CYLINDER CLEVIS PIN	1	
21	210-00078	HEX BOLT 3/8"-16 X 1"	4	
22	790-10802	PICKUP CONVEYOR CHAIN GUARD	1	
23	330-00254	1/32" ORIFICE FITTING 1/2" NPT X JIC #8	2	
24	790-00158	1" CLEVIS PIN	2	
24	210-00744	HAIR PIN COTTER, 3/16" X 3-5/8"	3	
26	210-00315	3/8" LOCKWASHER	4	
27	210-00393	1" SAE FLATWASHER	2	
28	050-00125	PICKUP CONVEYOR BELT		
	050-00125L	PRE-LACED PICKUP CONVEYOR BELT		



Turkey Harvester

20' / 24' Standard & Reverse Tongue

PRE-LOADER ASSEMBLY (790-10804)



27 BELTING (NOT SHOWN)



Turkey Harvester

20' / 24' Standard & Reverse Tongue

PRE-LOADER ASSEMBLY (790-10804)

ITEM	PART NUMBER	DESCRIPTION	QTY	MODEL OR SERIAL #
1	790-10805	PRE-LOADER FRAME WELDMENT	1	
2	790-00070L	PICKUP CONVEYOR TAKE UP ASSEMBLY	1	
3	790-00070R	PICKUP CONVEYOR TAKE UP ASSEMBLY	1	
4	030-00044	FLANGE BEARING 1"	2	
5	030-00019	PILOTED FLANGE BEARING 1-7/16"	2	
6	450-00023	CHAR-LYNN HYDRAULIC MOTOR #7 (USED WITH PVC BELT)	1	
	450-00002	CHAR-LYNN HYDRAULIC MOTOR #4 (USED WITH WIRE BELT)	1	
	630-00072	SEAL KIT FOR CHAR-LYNN HYDRAULIC MOTORS	1	
7	070-00781-05	MOTOR PLATE	1	
8	790-00075	PRE-LOADER IDLER ROLLER	1	
9	790-00074	PRE-LOADER DRIVE ROLLER	1	
10	790-00612	PRE-LOADER JACK	2	
11	110-00017	#50 ROLLER CHAIN	1	
12	210-00280	1" USS FLATWASHER	2	
13	210-00159	1-8 NC HEX NUT	2	
14	210-00833	1-8 HEX JAM NUT	2	
15	790-00618	PIVOT BEARING FOR PRE-LOADER	2	
16	790-00619	SNAP RING FOR 1-3/16" SHAFT	2	
17	210-00287	3/8" USS FLATWASHER	4	
18	210-00315	3/8" LOCKWASHER	4	
19	210-00073	3/8"-16 X 1-1/2" HEX BOLT	4	
20	790-10806	PRE-LOADER CHAIN GUARD	1	
21	690-00033	50BS20 SPROCKET 1-7/16"	1	
22	690-00034	50BS13 SPROCKET 1"	1	
23	790-00634	HOSE REEL	1	
25	790-10807L	PRE-LOADER STABILIZER BAR	1	
26	790-10807R	PRE-LOADER STABILIZER BAR	1	
27	050-00107	PRE-LOADER BELT		



Turkey Harvester

20' / 24' Standard & Reverse Tongue



Turkey Harvester

20' / 24' Standard & Reverse Tongue

Section 4

SLIDE / A-FRAME

Contents

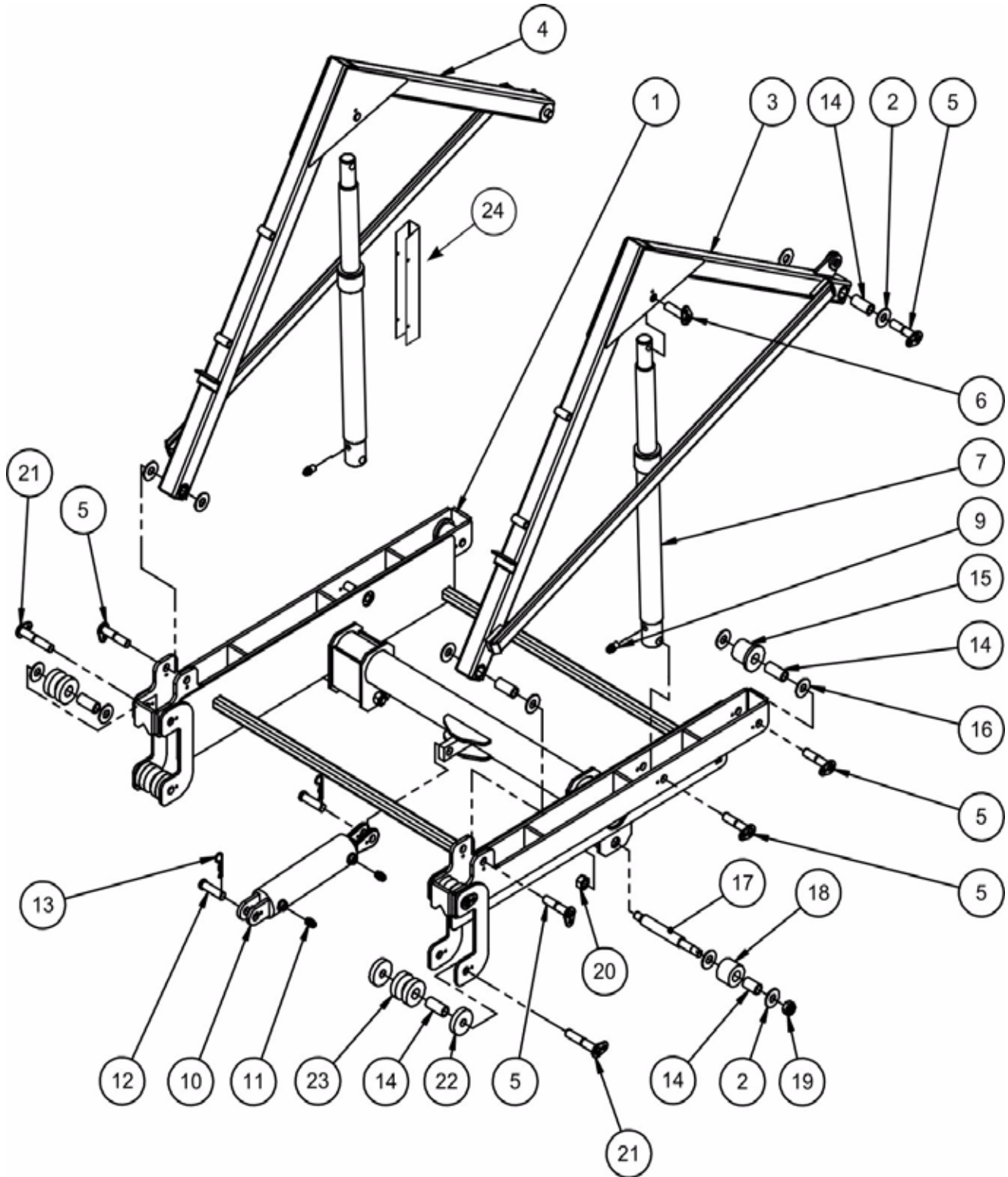
A-Frame and Slide Assembly - - - - - 2-3



Turkey Harvester

20' / 24' Standard & Reverse Tongue

A-FRAME AND SLIDE ASSEMBLY





Turkey Harvester

20' / 24' Standard & Reverse Tongue

A-FRAME AND SLIDE ASSEMBLY

ITEM	PART NUMBER	DESCRIPTION	QTY	MODEL OR SERIAL #
1	790-10404	A-FRAME SLIDE WELDMENT	1	
2	210-00280	1" USS FLATWASHER	8	
3	790-10402R	A-FRAME WELDMENT RIGHT (20')	1	
	790-30401R	A-FRAME WELDMENT RIGHT (24')	1	
4	790-10402L	A-FRAME WELDMENT LEFT (20')	1	
	790-30401L	A-FRAME WELDMENT LEFT (24')	1	
5	790-10406	PIN FOR ROLLER	4	
6	790-10407	PIN FOR TOP OF A-FRAME	2	
7	170-00063	A-FRAME CYLINDER	2	
	630-00075	SEAL KIT FOR CYLINDER 170-00063	1	
	630-00053	SEAL KIT FOR A-FRAME CYLINDER SOLD PRIOR TO 2014		
9	330-00254	1/32" ORIFICE FITTING 1/2" NPT X JIC #8	2	
10	170-00016	SLIDE CYLINDER	1	
	630-00027	SEAL KIT FOR 170-00016	1	
11	330-00046	STRAIGHT ADAPTOR SAE #8 MALE X JIC #8 MALE	2	
12	790-00560	CLEVIS PIN	2	
13	210-00744	HAIR PIN COTTER 3/16" X 3-5/8"	2	
14	030-00100	BRONZE BUSHING	12	
15	790-00114	FRONT ROLLER WITH BUSHING	2	
16	210-00393	1" SAE FLATWASHER	8	
17	790-00116	LOWER ROLLER SHAFT	2	
18	790-00115	LOWER ROLLER WITH BUSHING	2	
19	210-00208	1-8 SLOTTED NUT	2	
20	210-00159	1-8 HEX NUT	2	
21	790-10405	PIN FOR ROLLER	4	
22	790-00205	ROLLER SPACER	4	
23	790-00113	REAR ROLLER WITH BUSHING	4	
24	790-00674	CYLINDER SAFETY SUPPORT WITH PINS	2	



Turkey Harvester

20' / 24' Standard & Reverse Tongue



Turkey Harvester

20' / 24' Standard & Reverse Tongue

Section 5

COOPER PLATFORMS

Contents

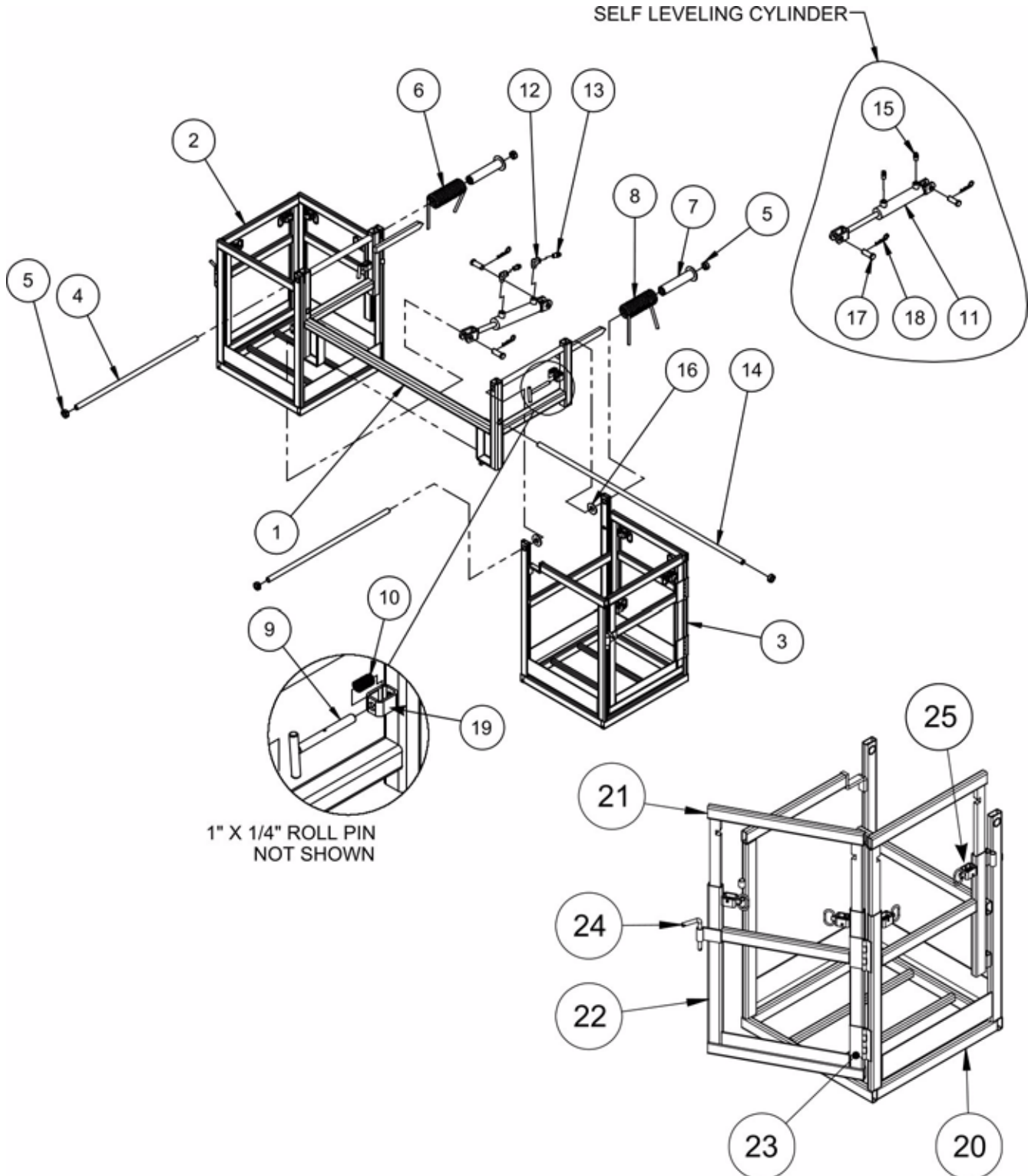
Three Piece Cooper Basket Assembly - - - - -	2-3
One Piece Cooper Basket Assembly- - - - -	4-5



Turkey Harvester

20' / 24' Standard & Reverse Tongue

THREE PIECE COOPER BASKET ASSEMBLY (790-10600)





Turkey Harvester

20' / 24' Standard & Reverse Tongue

THREE PIECE COOPER BASKET ASSEMBLY (790-10600)

ITEM	PART NUMBER	DESCRIPTION	QTY	MODEL OR SERIAL #
1	790-10601	COOPER FRAME	1	
2	790-10602R	COMPLETE COOPER BASKET (RIGHT)	1	
3	091-10602L	COMPLETE COOPER BASKET (LEFT)	1	
4	790-00208	COOPER BASKET HINGE ROD	2	
5	370-00005	SET COLLAR 1" ZINC PLATED	6	
6	790-00193R	TORSION SPRING FOR COOPER BASKET	1	
	790-00120R	SMALL TORSION SPRING (PRIOR TO 2013)	1	
7	790-10606	SPRING PIPE SPACER	2	
	790-00675	SPRING PIPE SPACER FOR SMALL SPRING (PRIOR TO 2013)	2	
8	790-00193L	COOPER BASKET TORSION SPRING	1	
	790-00120L	SMALL TORSION SPRING (PRIOR TO 2013)	1	
9	790-10607	T-HANDLE WELDMENT	2	
10	091-20567	GATE LOCK SPRING	2	
11	170-00017	COOPER BASKET TILT CYLINDER	2	
	630-00039	SEAL KIT FOR CYLINDER 170-00017	1	
12	330-00084	1/2" NPT STREET ELBOW	2	
13	330-00254	1/32" ORIFICE FITTING 1/2" NPT X JIC #8	2	
14	790-00213	COOPER MAIN HINGE ROD	1	
15	330-00020	STRAIGHT ADAPTOR (1/2" MALE NPT - 8 JIC)	2	
16	210-00280	1" USS FLATWASHER	4	
17	790-00158	1" CLEVIS PIN	4	
18	210-00744	HAIR PIN COTTER 3/16" X 3-5/8"	4	
19	790-00672	WELD ON LATCH KIT (INCLUDES BOX, SPRING, HANDLE, AND ROLL PIN)	1	
20	790-10603L	COOPER BASKET WELDMENT LEFT (SHOWN)	1	
	790-10603R	COOPER BASKET WELDMENT RIGHT		
21	790-10605	SLIDING RAIL	2	
22	790-10604L	COOPER BASKET GATE LEFT (SHOWN)	1	
	790-10604R	COOPER BASKET GATE RIGHT	1	
23	430-00008	WELD ON HINGE	2	
24	790-00261	GATE PIN	1	
25	790-00019	SMALL SPRING LATCH	1	

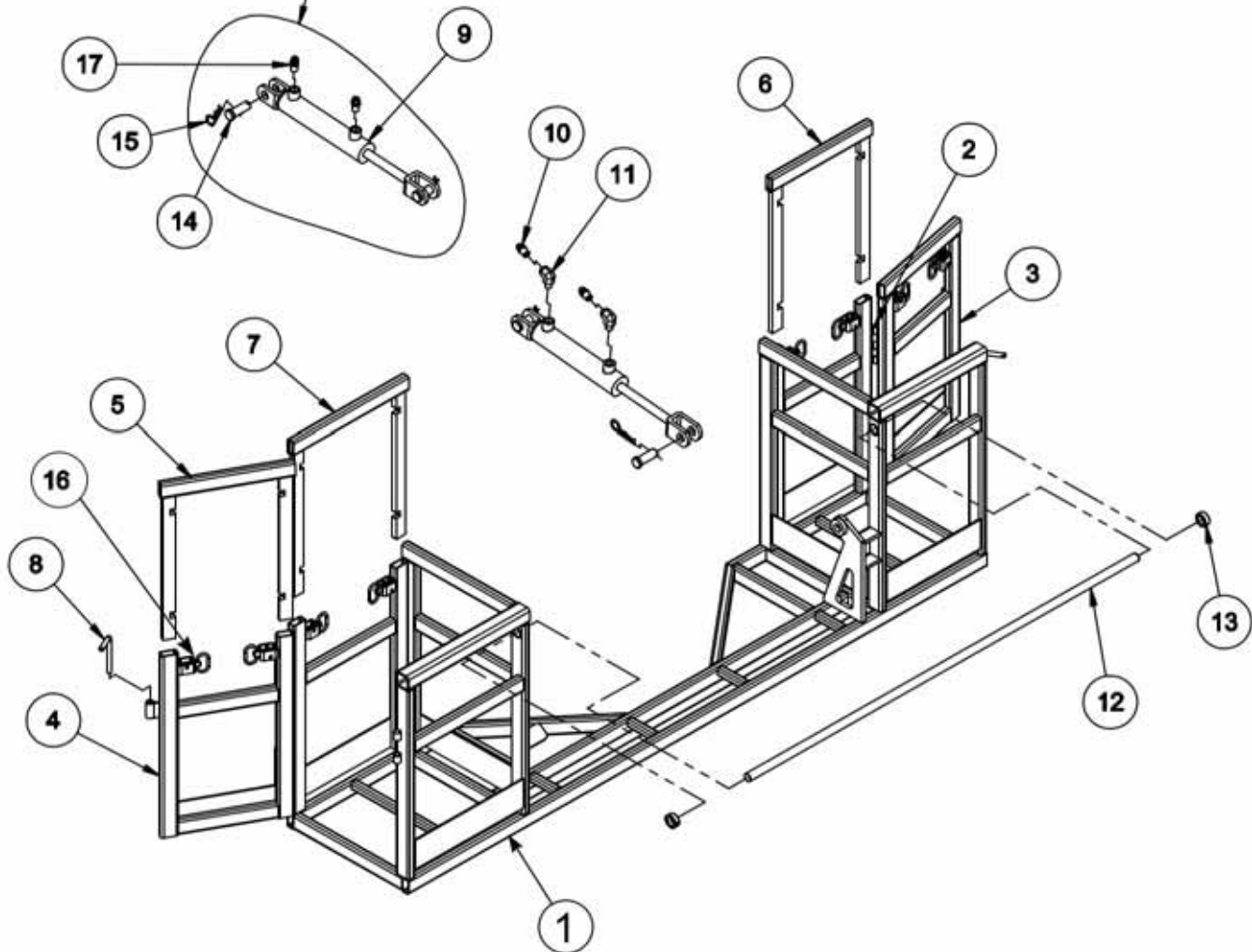


Turkey Harvester

20' / 24' Standard & Reverse Tongue

ONE PIECE COOPER PLATFORM ASSEMBLY

SELF LEVELING CYLINDER





Turkey Harvester

20' / 24' Standard & Reverse Tongue

ONE PIECE COOPER PLATFORM ASSEMBLY

ITEM	PART NUMBER	DESCRIPTION	QTY	MODEL OR SERIAL #
1	790-20601	SMALL COOPER PLATFORM WELDMENT	1	
2	430-00008	WELD ON HINGE	4	
3	790-20604L	SMALL COOPER PLATFORM GATE	1	
4	790-20604R	SMALL COOPER PLATFORM GATE	1	
5	790-20605	SMALL COOPER PLATFORM GATE SLIDE RAIL	2	
6	790-20603	NARROW SLIDE RAIL	1	
7	790-20602	WIDE SLIDE RAIL	1	
8	790-00261	COOPER BASKET GATE PIN	2	
9	170-00017	COOPER BASKET TILT CYLINDER	2	
	630-00039	SEAL KIT FOR CYLINDER 170-00017		
10	330-00254	1/32" ORIFICE FITTING 1/2" NPT X JIC #8	4	
11	330-00084	1/2" NPT STREET ELBOW	2	
12	790-00213	COOPER MAIN HINGE ROD	1	
13	370-00005	SET COLLAR 1" ZINC PLATED	2	
14	790-00158	1" CLEVIS PIN	4	
15	210-00744	HAIR PIN COTTER 3/16" X 3-5/8"	4	
16	790-00019	SMALL SPRING LATCH	8	
17	330-00020	STRAIGHT ADAPTOR (1/2" MALE NPT - 8 JIC)	2	



Turkey Harvester

20' / 24' Standard & Reverse Tongue



Turkey Harvester

20' / 24' Standard & Reverse Tongue

Section 6

HYDRAULIC COMPONENTS

Contents

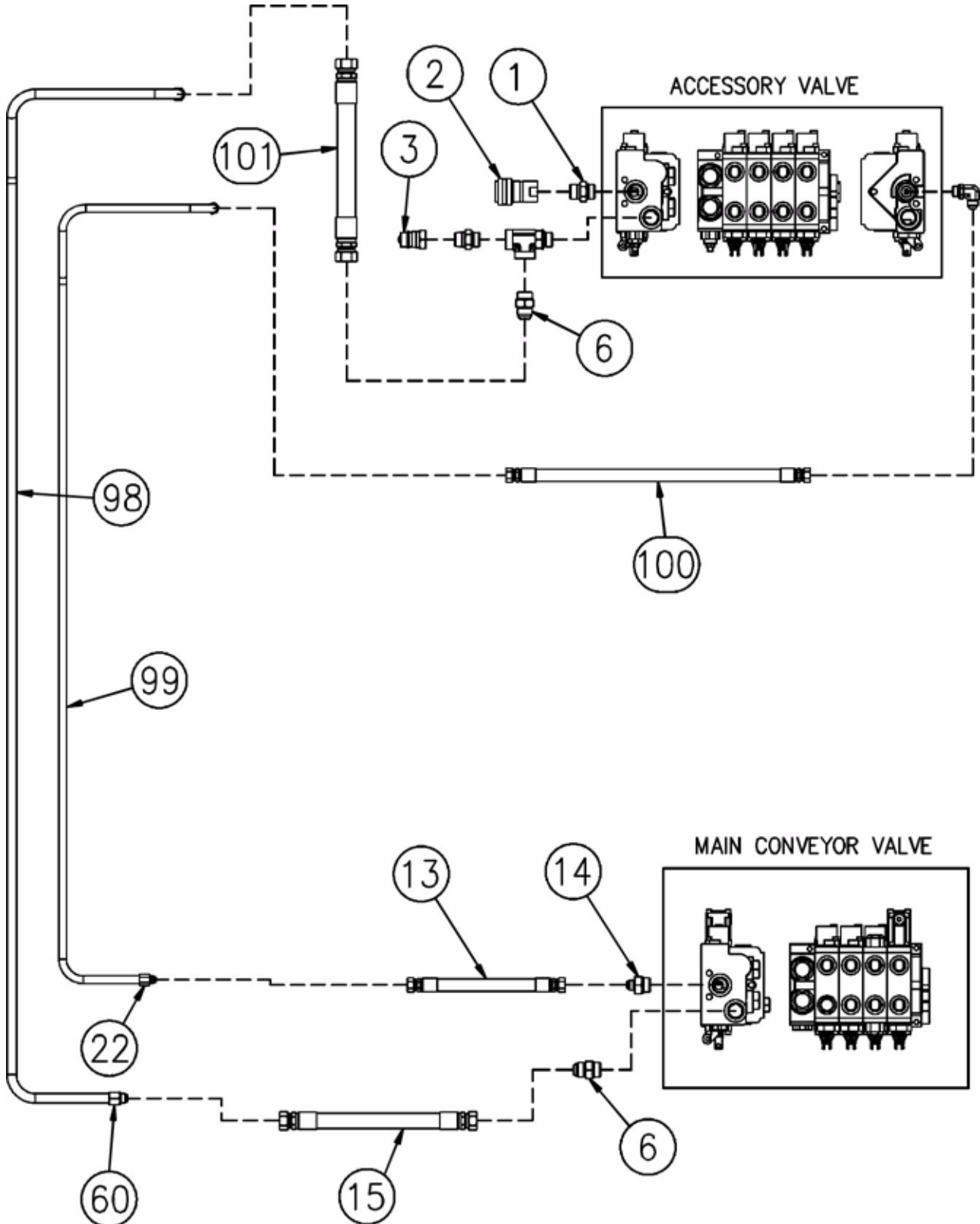
Main Circuit - - - - -	2-3
Old Style Main Circuit - - - - -	4-5
Belt Circuit - - - - -	6-7
A-Frame and Slide Circuit (Standard) - - - - -	8-9
A-Frame and Slide Circuit (Reverse Tongue)- - - - -	10-11
Cooper Leveling Circuit - - - - -	12-13
Old Style Cooper Leveling Circuit - - - - -	14-15
Pickup Conveyor and Drop Leg Circuit (Standard) - - - - -	16-17
Pickup Conveyor and Drop Leg Circuit (Reverse Tongue) - - - - -	18-19
Accessory Valve Assembly - - - - -	20-21
Main Valve Assembly - - - - -	22-23



Turkey Harvester

20' / 24' Standard & Reverse Tongue

MAIN CIRCUIT





Turkey Harvester

20' / 24' Standard & Reverse Tongue

MAIN CIRCUIT

ITEM	PART NUMBER	DESCRIPTION	QTY	MODEL OR SERIAL #
1	330-00783	STRAIGHT ADAPTOR (SAE #12 MALE X 3/4" NPT MALE)	2	
2	790-60629	3/4" FEMALE QUICK COUPLER	1	
3	790-60628	3/4" MALE QUICK COUPLER	1	
6	330-00037	STRAIGHT ADAPTOR SAE #12 MALE X JIC #12 MALE	2	
13	790-00568	MAIN CONVEYOR PRESSURE PIPE TO MAIN CONVEYOR VALVE HOSE	1	
14	330-00039	STRAIGHT ADAPTER SAE #12 MALE X JIC #8 MALE	1	
15	790-00569	MAIN CONVEYOR RETURN PIPE TO MAIN CONVEYOR VALVE HOSE	1	
22	330-00026	STRAIGHT ADAPTOR 1/2" NPT FEMALE X JIC #8 MALE	6	
60	330-00235	STRAIGHT ADAPTOR 3/4" NPT FEMALE X JIC #12 MALE	2	
98	790-20502	MAIN CONVEYOR TOP RETURN PIPE	1	
99	790-20501	MAIN CONVEYOR PRESSURE PIPE	1	
100	790-00686	ACCESSORY VALVE TO M/C PRESSURE PIPE HOSE	1	
101	790-00687	ACCESSORY VALVE TO M/C RETURN PIPE HOSE	1	

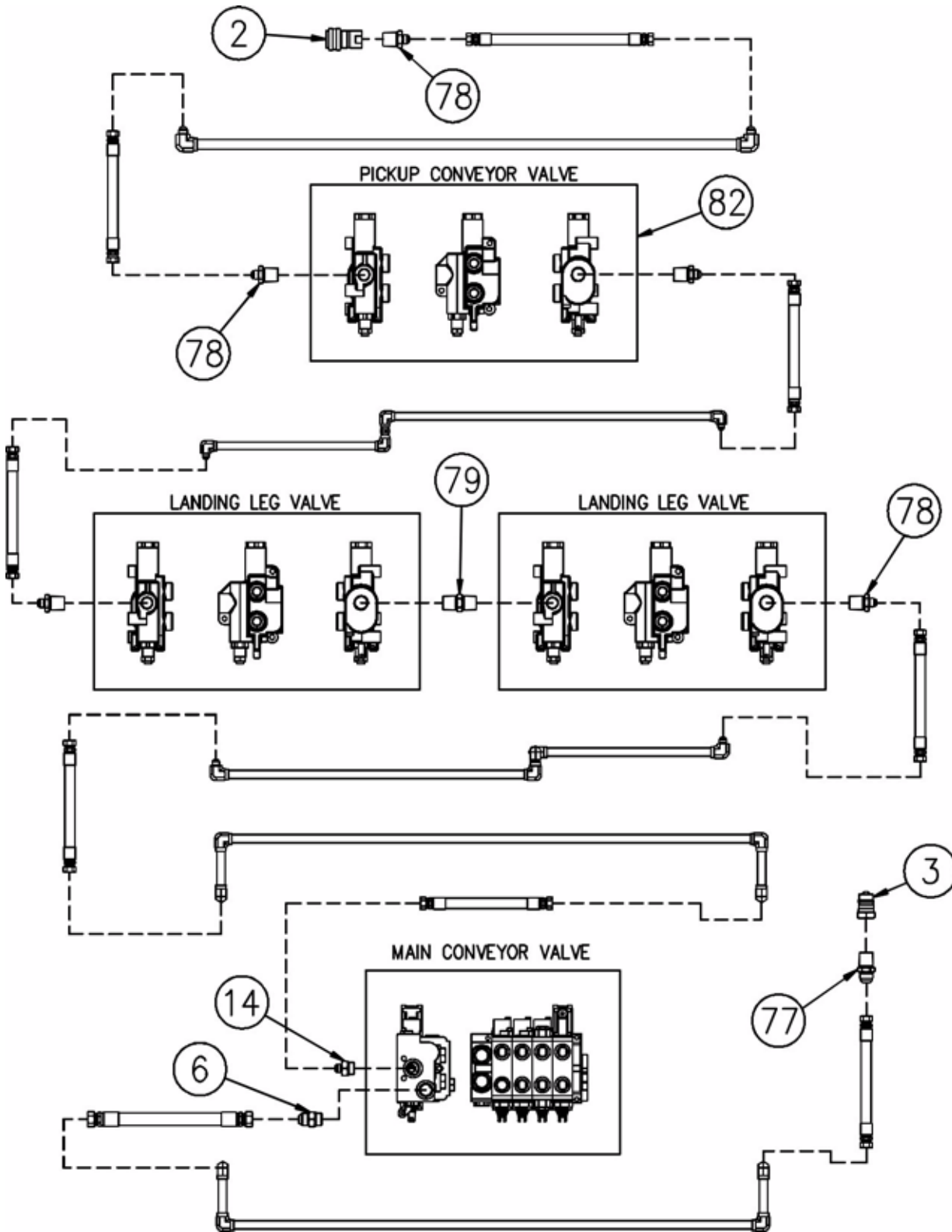
Note: Pipes are for 20' loader. See section 1 for 24' loader.



Turkey Harvester

20' / 24' Standard & Reverse Tongue

OLD STYLE MAIN CIRCUIT





Turkey Harvester

20' / 24' Standard & Reverse Tongue

OLD STYLE MAIN CIRCUIT

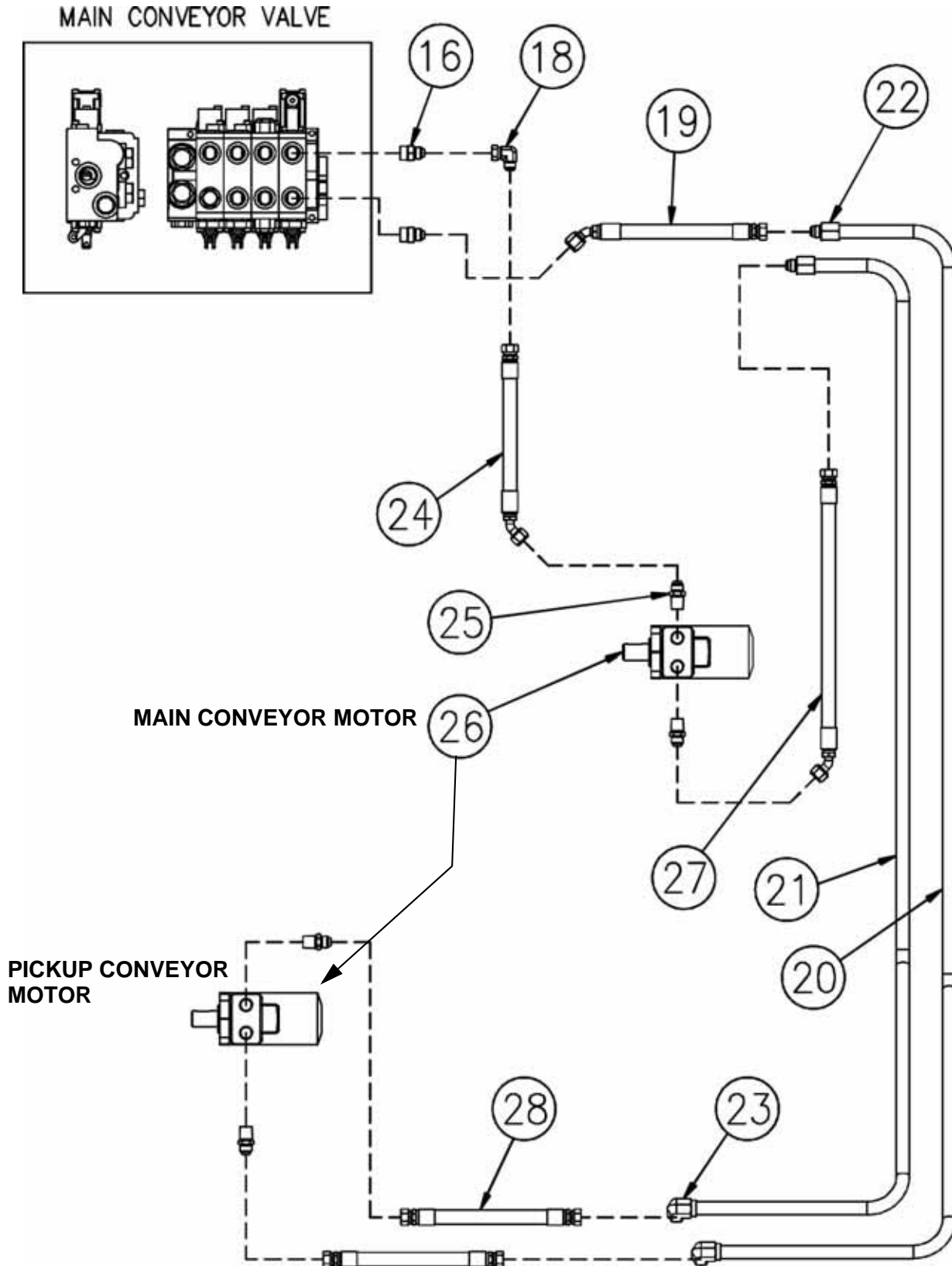
ITEM	PART NUMBER	DESCRIPTION	QTY	MODEL OR SERIAL #
2	790-60629	3/4" FEMALE QUICK COUPLER	1	
3	790-60628	3/4" MALE QUICK COUPLER	1	
6	330-00037	STRAIGHT ADAPTOR SAE #12 MALE X JIC #12 MALE	2	
14	330-00039	STRAIGHT ADAPTER SAE #12 MALE X JIC #8 MALE	1	
77	330-00008	STRAIGHT ADAPTER 3/4" NPT MALE X JIC #12 MALE	1	
78	330-00010	STRAIGHT ADAPTER 3/4" NPT MALE JIC #8 MALE	5	
79	330-00721	3/4" NPT PIPE NIPPLE	1	
82	810-00114	GRESEN MONOBLOCK CONTROL VALVE	1-4	
	810-00214	GRESEN MONOBLOCK CONTROL VALVE WITH DETENT		
	810-00115	HANDLE KIT FOR CONTROL VALVE	1	
	630-00028	SEAL KIT FOR CONTROL VALVE	1	



Turkey Harvester

20' / 24' Standard & Reverse Tongue

BELT CIRCUIT





Turkey Harvester

20' / 24' Standard & Reverse Tongue

BELT CIRCUIT

ITEM	PART NUMBER	DESCRIPTION	QTY	MODEL OR SERIAL #
16	330-00036	STRAIGHT ADAPTOR SAE #10 MALE X JIC #8 MALE	12	
18	330-00129	90 DEG CONNECTOR (JIC #8 MALE X JIC #8 SWIVEL)	5	
19	790-00592	VALVE TO PICKUP CONVEYOR PIPE 1 HOSE	1	
20	790-10508	PICKUP CONVEYOR PIPE ASSEMBLY 1	1	
21	790-10509	PICKUP CONVEYOR PIPE ASSEMBLY 2	1	
22	330-00026	STRAIGHT ADAPTOR 1/2" NPT FEMALE X JIC #8 MALE	6	
23	330-00104	90 DEG ADAPTOR 1/2" NPT FEMALE X JIC #8 MALE	11	
24	790-00593	VALVE TO MAIN MOTOR HOSE	1	
25	330-00020	STRAIGHT ADAPTOR (1/2" MALE NPT X #8 JIC)	6	
26	450-00002	CHAR-LYNN HYDRAULIC MOTOR #4 USED WITH WIRE BELT	2	
	450-00023	CHAR-LYNN HYDRAULIC MOTOR #7 USED WITH PVC BELT		
	630-00072	SEAL KIT FOR CHAR-LYNN MOTORS		
27	790-00570	MAIN MOTOR TO PICKUP CONVEYOR PIPE HOSE	1	
28	790-00571	PICKUP CONVEYOR PIPE TO MOTOR HOSE	2	

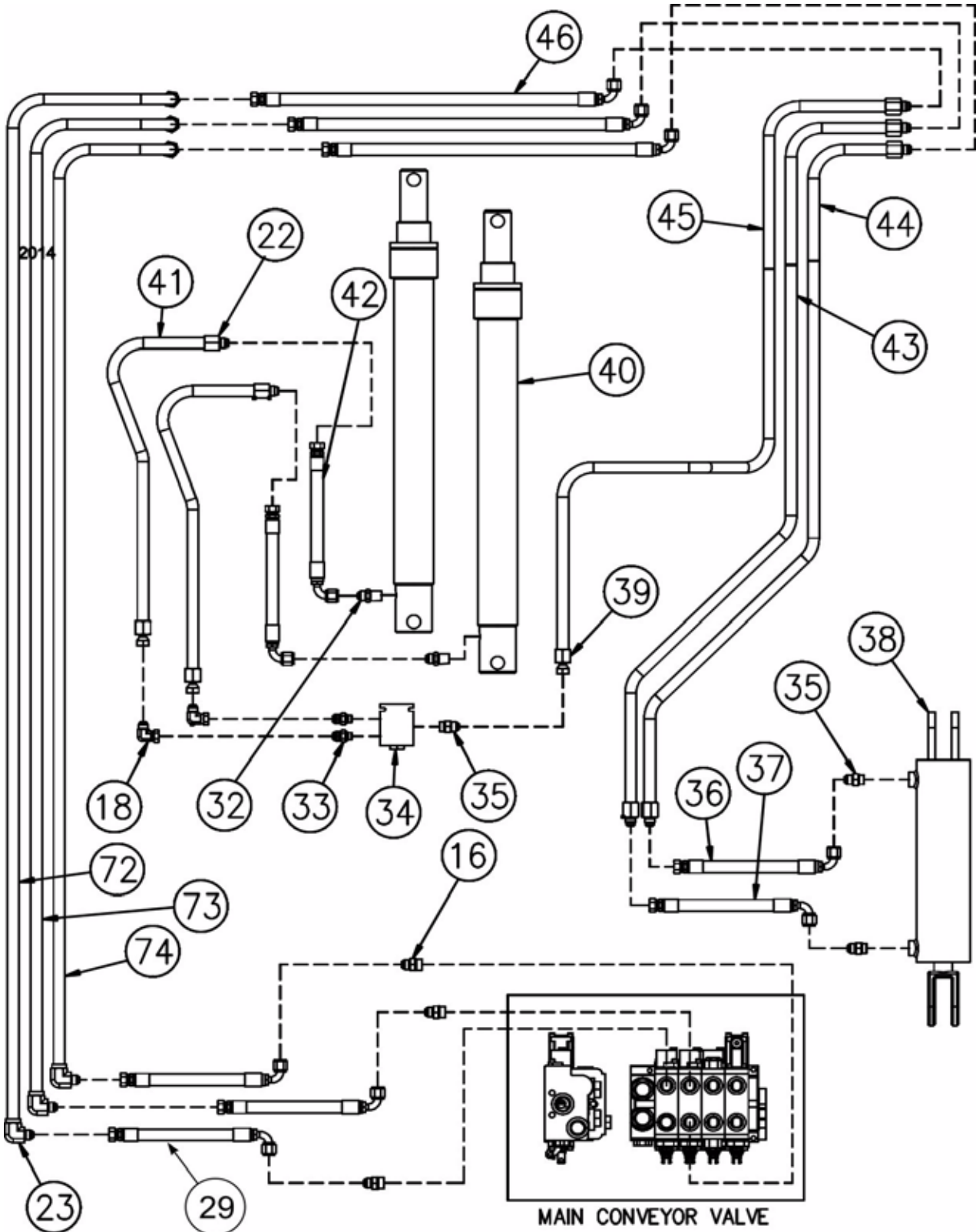
Note: Pipes are for 20' loader. See section 1 for 24' loader.



Turkey Harvester

20' / 24' Standard & Reverse Tongue

A-FRAME AND SLIDE CIRCUIT (STANDARD)





Turkey Harvester

20' / 24' Standard & Reverse Tongue

A-FRAME AND SLIDE CIRCUIT (STANDARD)

ITEM	PART NUMBER	DESCRIPTION	QTY	MODEL OR SERIAL #
16	330-00036	STRAIGHT ADAPTOR SAE #10 MALE X JIC #8 MALE	12	
18	330-00129	90 DEG CONNECTOR (JIC #8 MALE X JIC #8 SWIVEL)	5	
22	330-00026	STRAIGHT ADAPTOR 1/2" NPT FEMALE X JIC #8 MALE	6	
23	330-00104	90 DEG ADAPTOR 1/2" NPT FEMALE X JIC #8 MALE	11	
29	790-00572	MAIN CONVEYOR VALVE TO A-FRAME / SLIDE PIPE HOSE	3	
32	330-00254	STRAIGHT ADAPTOR WITH ORIFICE (1/2" MALE NPT X #8 JIC)	8	
33	330-00044	STRAIGHT ADAPTOR (SAE #6 MALE X JIC #8 MALE)	6	
34		FLOW DIVIDER	1	
	330-00151	FLOW DIVIDER BODY ONLY	1	
	330-00148	FLOW DIVIDER CARTRIDGE ONLY	1	
35	330-00046	STRAIGHT ADAPTOR SAE #8 MALE X JIC #8 MALE	3	
36	790-00575	SLIDE CYLINDER TO PIPE HOSE	1	
37	790-00576	SLIDE CYLINDER TO PIPE HOSE	1	
38	170-00016	SLIDE CYLINDER	1	
	630-00027	SEAL KIT FOR 170-00016		
39	330-00786	STRAIGHT ADAPTOR (1/2" NPT FEMALE X JIC #8 SWIVEL)	3	
40	170-00063	A-FRAME LIFT CYLINDER	2	
	630-00075	SEAL KIT FOR 170-00063		
	630-00053	SEAL KIT FOR 170-00063 SOLD PRIOR TO 2014		
41	790-10130	A-FRAME LIFT CYLINDER PIPE ASSEMBLY	2	
42	790-00577	A-FRAME LIFT CYLINDER TO PIPE HOSE	2	
43	790-10122	FRAME SLIDE PIPE ASSEMBLY 2	1	
44	790-10121	FRAME SLIDE PIPE ASSEMBLY 1	1	
45	790-10120	FLOW DIVIDER PIPE ASSEMBLY	1	
46	790-00578	FRAME PIPING TO MAIN CONVEYOR PIPING HOSE	3	
72	790-10512	A-FRAME PIPE	1	
73	790-10511	SLIDE PIPE 2	1	
74	790-10510	SLIDE PIPE 1	1	

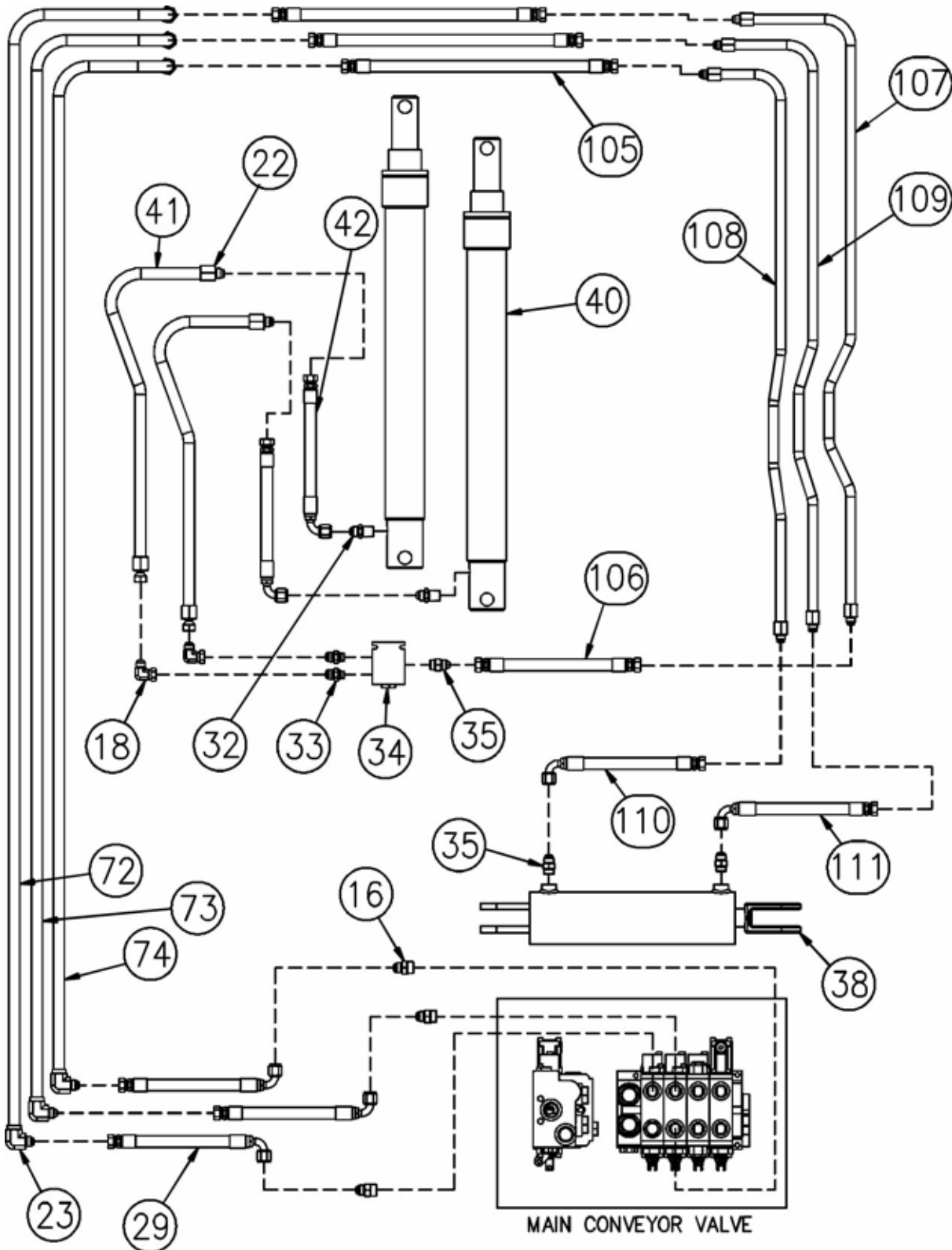
Note: Pipes are for 20' loader. See section 1 for 24' loader.



Turkey Harvester

20' / 24' Standard & Reverse Tongue

A-FRAME AND SLIDE CIRCUIT (REVERSE TONGUE)





Turkey Harvester

20' / 24' Standard & Reverse Tongue

A-FRAME AND SLIDE CIRCUIT (REVERSE TONGUE)

ITEM	PART NUMBER	DESCRIPTION	QTY	MODEL OR SERIAL #
16	330-00036	STRAIGHT ADAPTOR SAE #10 MALE X JIC #8 MALE	12	
18	330-00129	90 DEG CONNECTOR (JIC #8 MALE X JIC #8 SWIVEL)	5	
22	330-00026	STRAIGHT ADAPTOR 1/2" NPT FEMALE X JIC #8 MALE	6	
23	330-00104	90 DEG ADAPTOR 1/2" NPT FEMALE X JIC #8 MALE	11	
29	790-00572	MAIN CONVEYOR VALVE TO A-FRAME / SLIDE PIPE HOSE	3	
32	330-00254	STRAIGHT ADAPTOR W ORIFICE (1/2" MALE NPT X 8 JIC)	8	
33	330-00044	STRAIGHT ADAPTOR (SAE #6 MALE X JIC #8 MALE)	6	
34		FLOW DIVIDER	1	
	330-00151	FLOW DIVIDER BODY ONLY	1	
	330-00148	FLOW DIVIDER CARTRIDGE ONLY	1	
35	330-00046	STRAIGHT ADAPTOR SAE #8 MALE X JIC #8 MALE	3	
36	790-00575	SLIDE CYLINDER TO PIPE HOSE	1	
38	170-00016	SLIDE CYLINDER	1	
	630-00027	SEAL KIT FOR 170-00016		
40	170-00018	A-FRAME LIFT CYLINDER	2	
	630-00075	SEAL KIT FOR 170-00063		
	630-00053	SEAL KIT FOR 170-00063 SOLD PRIOR TO 2014		
41	790-10130	A-FRAME LIFT CYLINDER PIPE ASSEMBLY	2	
42	790-00577	A-FRAME LIFT CYLINDER TO PIPE HOSE	2	
72	790-10512	A-FRAME LIFT PIPE ASSEMBLY	2	
73	790-10511	SLIDE PIPE ASSEMBLY 2	1	
74	790-10510	SLIDE PIPE ASSEMBLY 1	1	
105	790-00688	MAIN CONVEYOR TO FRAME PIPING HOSE (RT)	3	
106	790-00689	PIPE TO FLOW DIVIDER HOSE (RT)	1	
107	790-20108	FLOW DIVIDER PIPE (RT)	1	
108	790-20106	SLIDE PIPE 1 (RT)	1	
109	790-20107	SLIDE PIPE 2 (RT)	1	
110	790-00690	SLIDE PIPE 1 TO CYLINDER HOSE (RT)	1	
111	790-00691	SLIDE PIPE 2 TO CYLINDER HOSE (RT)	1	

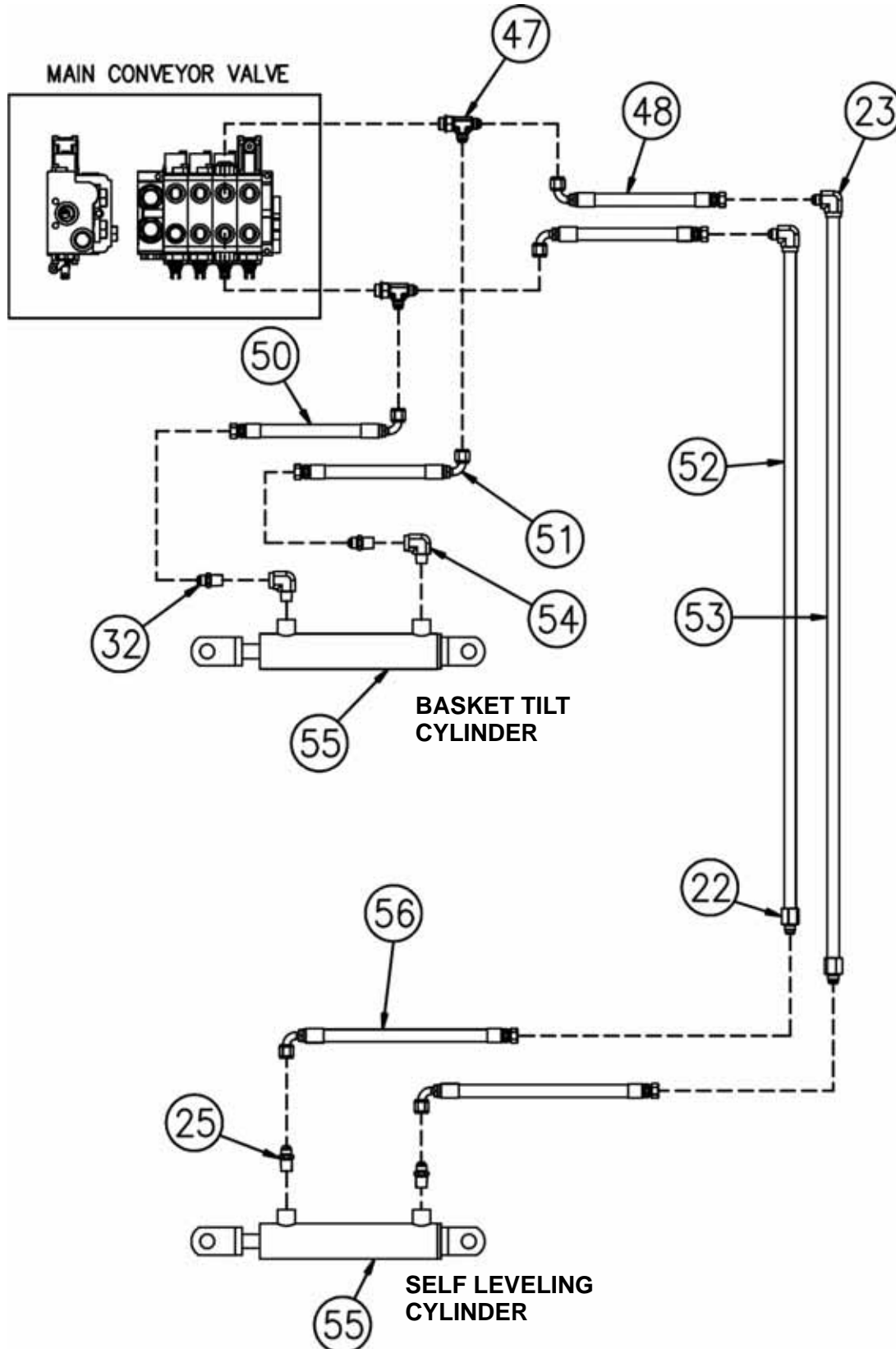
Note: Pipes are for 20' loader. See section 1 for 24' loader.



Turkey Harvester

20' / 24' Standard & Reverse Tongue

COOPER LEVELING CIRCUIT





Turkey Harvester

20' / 24' Standard & Reverse Tongue

COOPER LEVELING CIRCUIT

ITEM	PART NUMBER	DESCRIPTION	QTY	MODEL OR SERIAL #
22	330-00026	STRAIGHT ADAPTOR 1/2" NPT FEMALE X JIC #8 MALE	6	
23	330-00104	90 DEG ADAPTOR 1/2" NPT FEMALE X JIC #8 MALE	11	
25	330-00020	STRAIGHT ADAPTOR (1/2" MALE NPT X #8 JIC)	6	
32	330-00254	STRAIGHT ADAPTOR W ORIFICE (1/2" MALE NPT X #8 JIC)	8	
47	330-00781	MALE RUN TEE (SAE #10 X JIC #8 X JIC #8)	2	
48	790-00579	VALVE TO LEVELER PIPE HOSE	1	
50	790-00581	VALVE TO COOPER CYLINDER (ROD END) HOSE	1	
51	790-00582	VALVE TO COOPER CYLINDER (BASE END) HOSE	1	
52	790-10516	LEVELER PIPE ASSEMBLY 2	1	
53	790-10515	LEVELER PIPE ASSEMBLY 1	1	
54	330-00084	1/2" NPT STREET ELBOW	2	
55	170-00017	COOPER CYLINDER	2	
	630-00039	SEAL KIT FOR 170-00017	1	
56	790-00583	LEVELER PIPE TO CYLINDER HOSE	2	

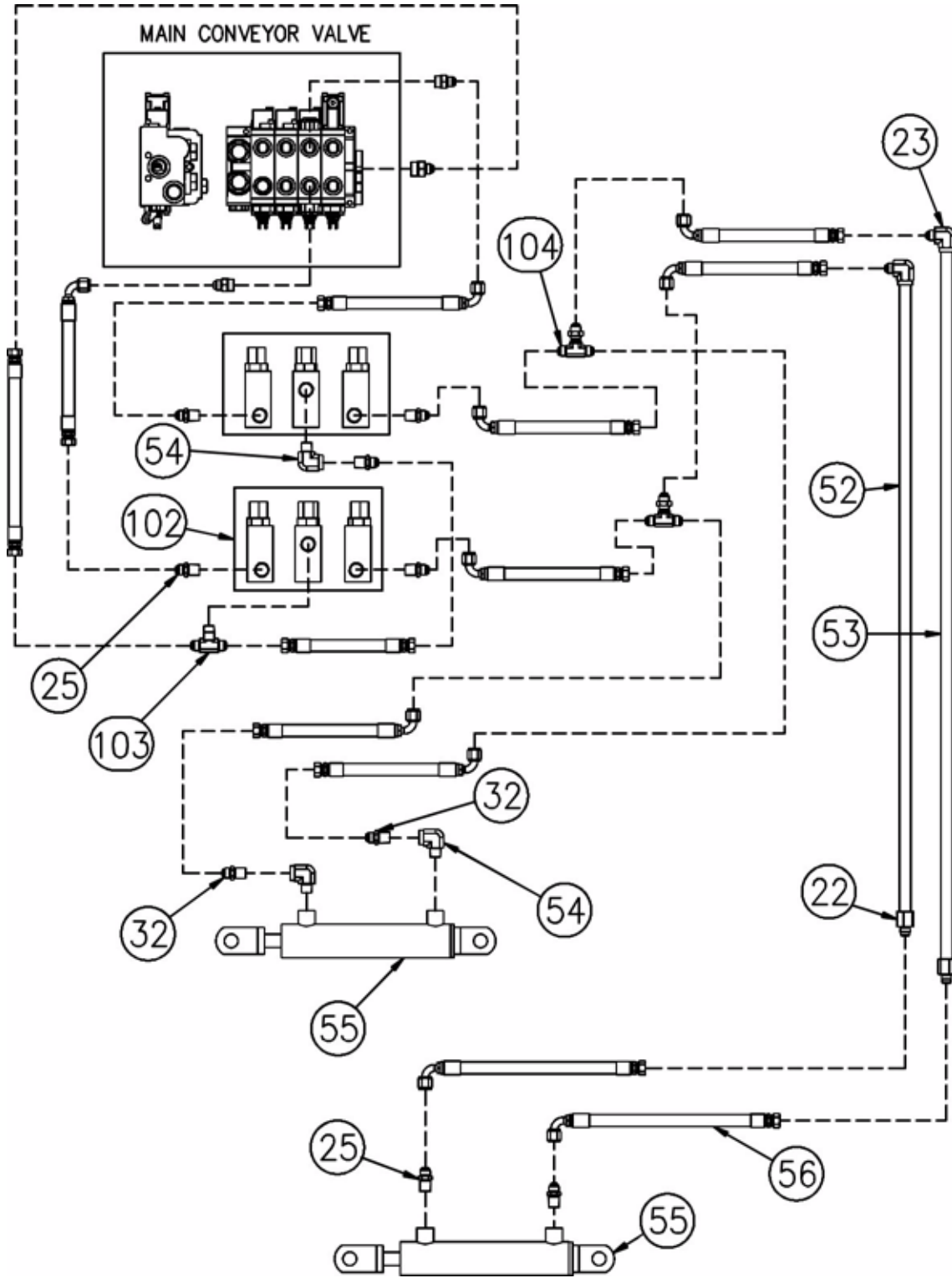
Note: Pipes are for 20' loader. See section 1 for 24' loader.



Turkey Harvester

20' / 24' Standard & Reverse Tongue

OLD STYLE COOPER LEVELING CIRCUIT





Turkey Harvester

20' / 24' Standard & Reverse Tongue

OLD STYLE COOPER LEVELING CIRCUIT

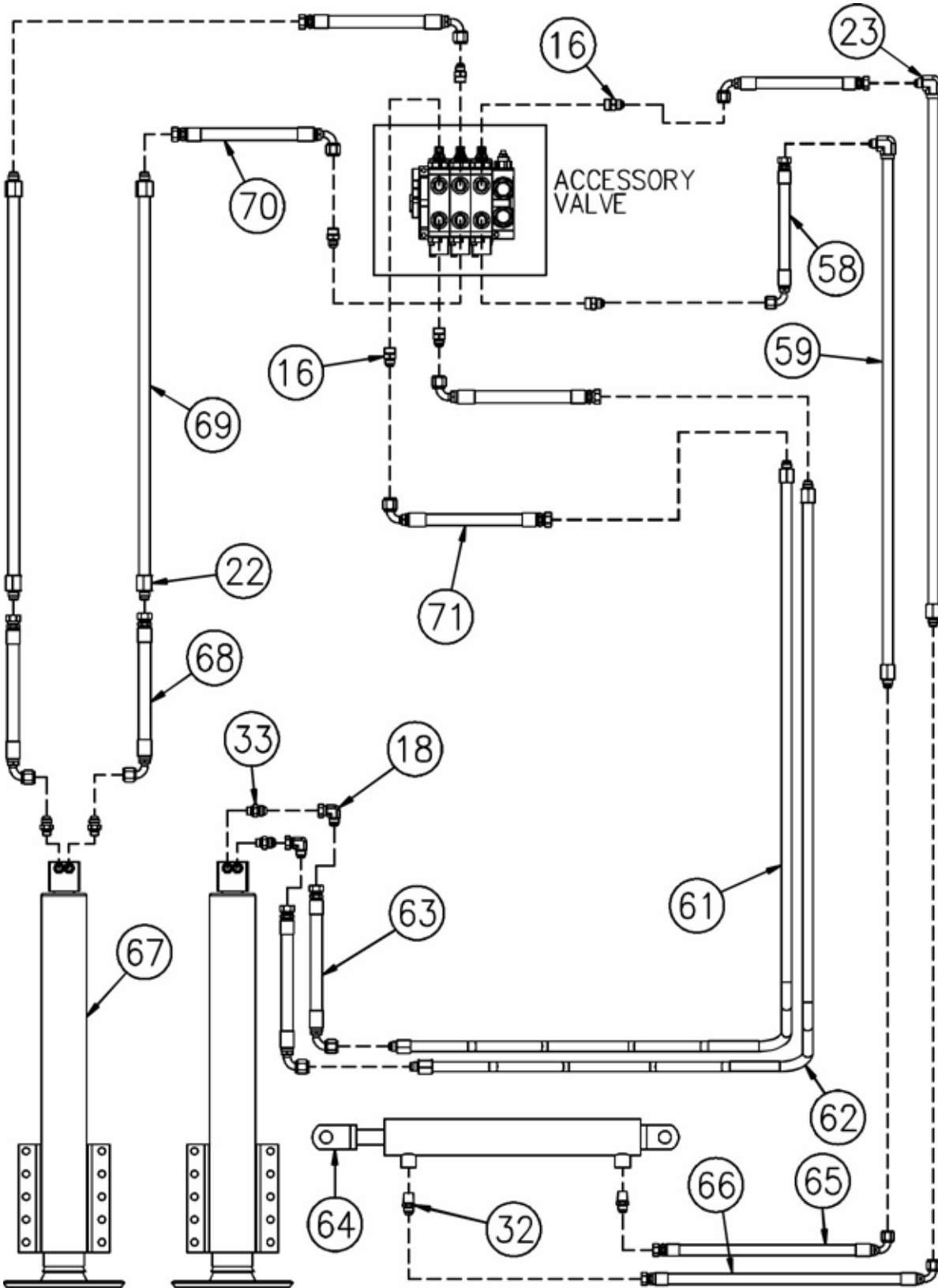
ITEM	PART NUMBER	DESCRIPTION	QTY	MODEL OR SERIAL #
22	330-00026	STRAIGHT ADAPTOR 1/2" NPT FEMALE X JIC #8 MALE	6	
23	330-00104	90 DEG ADAPTOR 1/2" NPT FEMALE X JIC #8 MALE	11	
25	330-00020	STRAIGHT ADAPTOR (1/2" MALE NPT X #8 JIC)	6	
32	330-00254	STRAIGHT ADAPTOR W ORIFICE (1/2" MALE NPT X 8 JIC)	8	
52	790-10516	LEVELER PIPE ASSEMBLY 2	1	
53	790-10515	LEVELER PIPE ASSEMBLY 1	1	
54	330-00084	1/2" NPT STREET ELBOW	2	
55	170-00017	COOPER CYLINDER	2	
	630-00039	SEAL KIT FOR 170-00017	1	
56	790-00583	LEVELER PIPE TO CYLINDER HOSE	2	
102	810-00117	RELIEF VALVE	1	
103	330-00101	1/2" NPT MALE X JIC #8 MALE BRANCH TEE	1	
104	330-00131	BULKHEAD BRANCH TEE JIC #8 MALE	2	



Turkey Harvester

20' / 24' Standard & Reverse Tongue

PICKUP CONVEYOR AND DROP LEG CIRCUIT (STANDARD)





Turkey Harvester

20' / 24' Standard & Reverse Tongue

PICKUP CONVEYOR AND DROP LEG CIRCUIT (STANDARD)

ITEM	PART NUMBER	DESCRIPTION	QTY	MODEL OR SERIAL #
16	330-00036	STRAIGHT ADAPTOR SAE #10 MALE X JIC #8 MALE	12	
18	330-00129	90 DEG CONNECTOR (JIC #8 MALE X JIC #8 SWIVEL)	5	
22	330-00026	STRAIGHT ADAPTOR 1/2" NPT FEMALE X JIC #8 MALE	6	
23	330-00104	90 DEG ADAPTOR 1/2" NPT FEMALE X JIC #8 MALE	11	
32	330-00254	STRAIGHT ADAPTOR W ORIFICE (1/2" MALE NPT X #8 JIC)	8	
33	330-00044	STRAIGHT ADAPTOR (SAE #6 MALE X JIC #8 MALE)	6	
58	790-00585	VALVE TO PICKUP CONVEYOR LIFT PIPE HOSE	2	
59	790-10127	PICKUP CONVEYOR LIFT PIPE ASSEMBLY	2	
61	790-10125	CROSSOVER DROP LEG PIPE ASSEMBLY 2	1	
62	790-10124	CROSSOVER DROP LEG PIPE ASSEMBLY 1	1	
63	790-00586	CROSSOVER PIPE TO DROP LEG HOSE	2	
64	170-00030	PICKUP CONVEYOR LIFT CYLINDER	1	
	630-00021	SEAL KIT FOR CYLINDER 170-00030	1	
65	790-00587	PICKUP CONVEYOR LIFT PIPE TO CYLINDER 1 HOSE	1	
66	790-00588	PICKUP CONVEYOR LIFT PIPE TO CYLINDER 2 HOSE	1	
67	790-00164	HEAVY DUTY HYDRAULIC LEG (1/2014 AND NEWER)	2	
	730-02223	HYDRAULIC LEG WITH FOOT PAD (PRIOR TO 2014)	2	
	630-00029	SEAL KIT FOR ABOVE (730-02223)	1	
	730-02224	FOOT PAD ONLY FOR 730-02223	1	
68	790-00589	DROP LEG TO PIPE HOSE	2	
69	790-10123	VALVE SIDE PROP LEG PIPE ASSEMBLY	2	
70	790-00590	VALVE TO DROP LEG PIPE HOSE	2	
71	790-00591	VALVE TO CROSSOVER PIPE 2 HOSE	2	

Note: Pipes are for 20' loader. See section 1 for 24' loader.



Turkey Harvester

20' / 24' Standard & Reverse Tongue

PICKUP CONVEYOR AND DROP LEG CIRCUIT (REVERSE TONGUE)

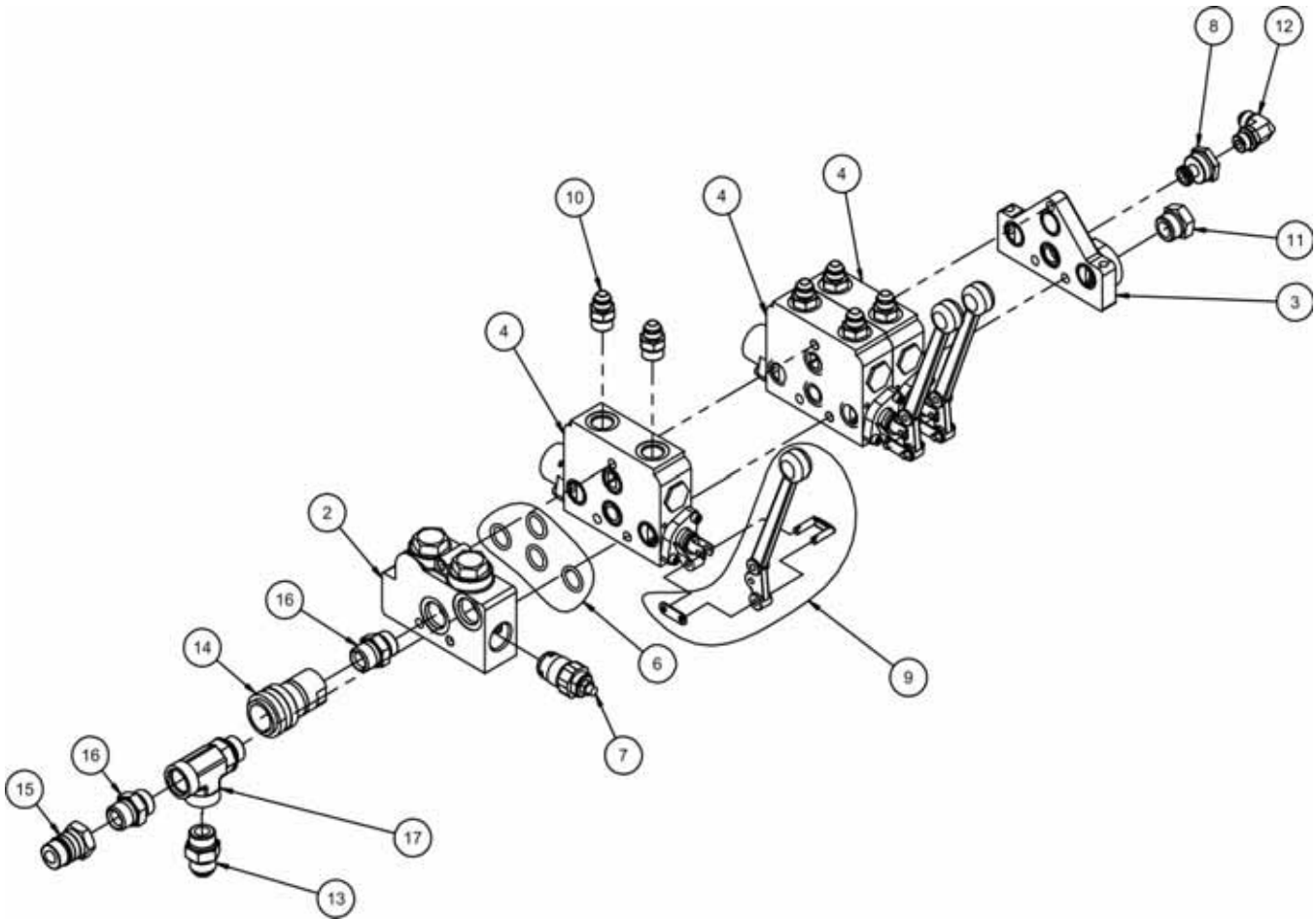
ITEM	PART NUMBER	DESCRIPTION	QTY	MODEL OR SERIAL #
16	330-00036	STRAIGHT ADAPTOR SAE #10 MALE X JIC #8 MALE	12	
18	330-00129	90 DEG CONNECTOR (JIC #8 MALE X JIC #8 SWIVEL)	5	
32	330-00254	STRAIGHT ADAPTOR W ORIFICE (1/2" MALE NPT X #8 JIC)	8	
33	330-00044	STRAIGHT ADAPTOR (SAE #6 MALE X JIC #8 MALE)	6	
35	330-00046	STRAIGHT ADAPTOR SAE #8 MALE X JIC #8 MALE	3	
64	170-00030	PICKUP CONVEYOR LIFT CYLINDER	1	
	630-00021	SEAL KIT		
67	790-00164	HEAVY DUTY HYDRAULIC LEG (1/2014 630-00021 AND NEWER)	2	
	730-02223	HYDRAULIC LEG WITH FOOT PAD (PRIOR TO 2014)	2	
	630-00029	SEAL KIT FOR ABOVE (730-02223)	1	
	730-02224	FOOT PAD ONLY FOR 730-02223	1	
76	170-00054	SLIDING TANDEM CYLINDER	1	
	630-00027	SEAL KIT FOR 170-00054 CYLINDER		
83	790-00678	VALVE TO SLIDING TANDEM FWD HOSE	1	
84	790-00679	VALVE TO SLIDING TANDEM REV HOSE	1	
85	790-00680	VALVE TO RT X-OVER PIPE / X-OVER TO FRAME PIPE HOSE	4	
86	790-00681	VALVE TO RT DROP LEG PIPE HOSE	2	
88	790-00682	VALVE TO RT P/U CONVEYOR LIFT PIPE HOSE	2	
89	790-00683	PIPE TO DROP LEG HOSE	4	
90	790-00684	PICKUP CONVEYOR PIPE TO CYLINDER HOSE 2	1	
91	790-00685	PICKUP CONVEYOR PIPE TO CYLINDER HOSE 2	1	
92	790-20103	PICKUP CONVEYOR PIPE	2	
93	790-20104	DROP LEG X-OVER PIPE	2	
94	790-20105L	OUTER FRAME TOP PIPE LEFT	1	
95	790-20105R	OUTER FRAME TOP PIPE RIGHT	1	
96	790-20102L	INNER FRAME TOP PIPE LEFT	1	
97	790-20102R	INNER FRAME TOP PIPE RIGHT	1	



Turkey Harvester

20' / 24' Standard & Reverse Tongue

ACCESSORY VALVE ASSEMBLY (790-00453)



NOTE: ACCESSORY VALVE CAN BE 1, 3, OR 4 SECTION DEPENDING OPTIONS. THREE SECTION SHOWN.

DESCRIPTION	P/N
ONE SECTION	790-00453.1
THREE SECTION	790-00453.3
FOUR SECTION	790-00453.4



Turkey Harvester

20' / 24' Standard & Reverse Tongue

ACCESSORY VALVE ASSEMBLY (790-00453)

ITEM	PART NUMBER	DESCRIPTION	QTY	MODEL OR SERIAL #
1	810-00237.1	1 SECTION VALVE WITH POWER BEYOND SLEEVE (NO FITTINGS)		
	810-00237.3	3 SECTION VALVE WITH POWER BEYOND SLEEVE (NO FITTINGS)		
	810-00237.4	4 SECTION VALVE WITH POWER BEYOND SLEEVE (NO FITTINGS)		
2		INLET COVER (20-LC-12)		
3		OUTLET COVER (20-RC-12-E-MY)		
4		V20 WORK SECTION (3 POSITION, 4 WAY) WITH HD RETAINERS, CAPS, AND BRACKETS		
	630-00015	COMPLETE KIT FOR WORK SECTION	1	
5	810-00240	BOLT KIT FOR 3 SECTION V20 (NOT SHOWN)		
	810-00239	BOLT KIT FOR 1 SECTION V20 (NOT SHOWN)		
	810-00137	BOLT KIT FOR 4 SECTION V20 (NOT SHOWN)		
6	630-00018	SEAL KIT (BETWEEN VALVE SECTIONS)		
7	810-00070	MAIN RELIEF VALVE		
8		SAE #8 POWER BEYOND SLEEVE	1	
9	810-00021	HANDLE KIT	3	
10	330-00036	STRAIGHT ADAPTOR SAE #10 MALE X JIC #8 MALE	6	
11	330-00049	HEX HEAD PLUG SAE #12	1	
12	330-00115	90 DEG. ADAPTER SAE #8 MALE X JIC #8 MALE	1	
13	330-00037	STRAIGHT ADAPTOR SAE #12 MALE X JIC #12 MALE	1	
14	790-60629	3/4" FEMALE QUICK COUPLER	1	
15	790-60628	3/4" MALE QUICK COUPLER	1	
16	330-00783	STRAIGHT ADAPTOR SAE #12 MALE X 3/4" NPT MALE	2	
17	330-00782	RUN TEE SAE #12	1	

630-00015 includes the o-rings to completely rebuild one valve section. The kit includes the o-rings shown in 630-00018 (Item 6) plus spool o-ring, load check valve o-rings, and load check valve back up rings.

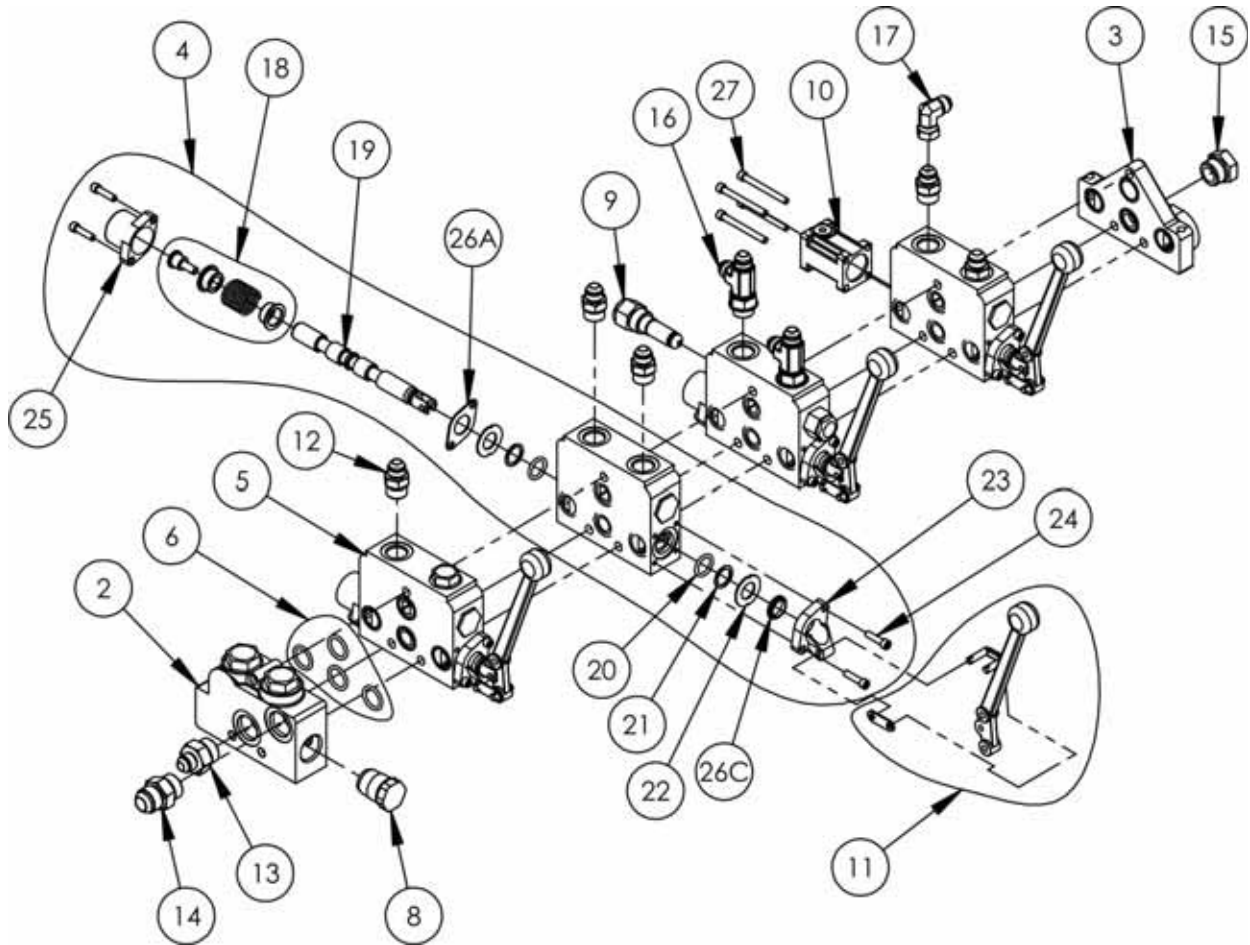
630-00018 includes only the o-ring between the sections (shown in Item 6). Enough o-rings are included for one valve section or an outlet cover.



Turkey Harvester

20' / 24' Standard & Reverse Tongue

MAIN VALVE ASSEMBLY (790-00452)





Turkey Harvester

20' / 24' Standard & Reverse Tongue

MAIN VALVE ASSEMBLY (790-00452)

ITEM	PART NUMBER	DESCRIPTION	QTY	MODEL OR SERIAL #
1	810-00238	COMPLETE 4 SECTION V20 (NO FITTINGS)	1	
2		INLET COVER (20-LC-12)		
3	810-00111	OUTLET COVER (20-RC-12-E)		
4		V20 WORK SECTION (3 POSITION, 4 WAY) WITH HD RETAINERS, CAPS, AND BRACKETS		
5		V20 WORK SECTION (3 POSITION, 3 WAY) WITH HD RETAINERS, CAPS, AND BRACKETS		
	630-00015	COMPLETE SEAL KIT FOR WORK SECTION	1	
6	630-00018	SEAL KIT (BETWEEN VALVE SECTIONS)		
7	810-00137	BOLT KIT FOR 4 SECTION V20 (NOT SHOWN)		
8		NO RELIEF PLUG		
9	810-00218	PORT RELIEF		
10	790-00016	FRICTION DETENT SPOOL POSITIONER		
11	810-00021	HANDLE KIT	4	
12	330-00036	STRAIGHT ADAPTOR SAE #10 MALE X JIC #8 MALE	5	
13	330-00039	STRAIGHT ADAPTOR SAE #12 MALE X JIC #8 MALE	1	
14	330-00037	STRAIGHT ADAPTOR SAE #12 MALE X JIC #12 MALE	1	
15	330-00049	HEX HEAD PLUG SAE #12	1	
16	330-00781	RUN TEE JIC #8 SAE #10 X JIC #8	2	
17	330-00129	90 DEG. CONNECTOR JIC #8 FEMALE X JIC #8 MALE	1	
18	810-00128	SPRING SPOOL POSITIONER		
19		VALVE SPOOL		
20		SPOOL O-RING		
21		BACK UP RING		
22		WASHER		
23	790-00012	CAST IRON HANDLE BRACKET		
24		1/4-20 X 7/8 LONG SOCKET HEAD CAP SCREW		
25	790-00013	HEAVY DUTY CAP		
26	790-00011	HEAVY DUTY SEAL KIT		
27		1/4-20 X 3-1/2" LONG SOCKET HEAD CAP SCREW		

630-00015 includes the o-rings to completely rebuild one valve section. The kit includes the o-rings shown in 630-00018 (Item 6) plus spool o-ring (Item 20), load check valve o-rings, and load check valve back up rings.

630-00018 includes only the o-ring between the sections (shown in Item 6). Enough o-rings are included for one valve section or an outlet cover.



Turkey Harvester

20' / 24' Standard & Reverse Tongue



Turkey Harvester

20' / 24' Standard & Reverse Tongue

Section 7

CORRAL PANELS

Contents

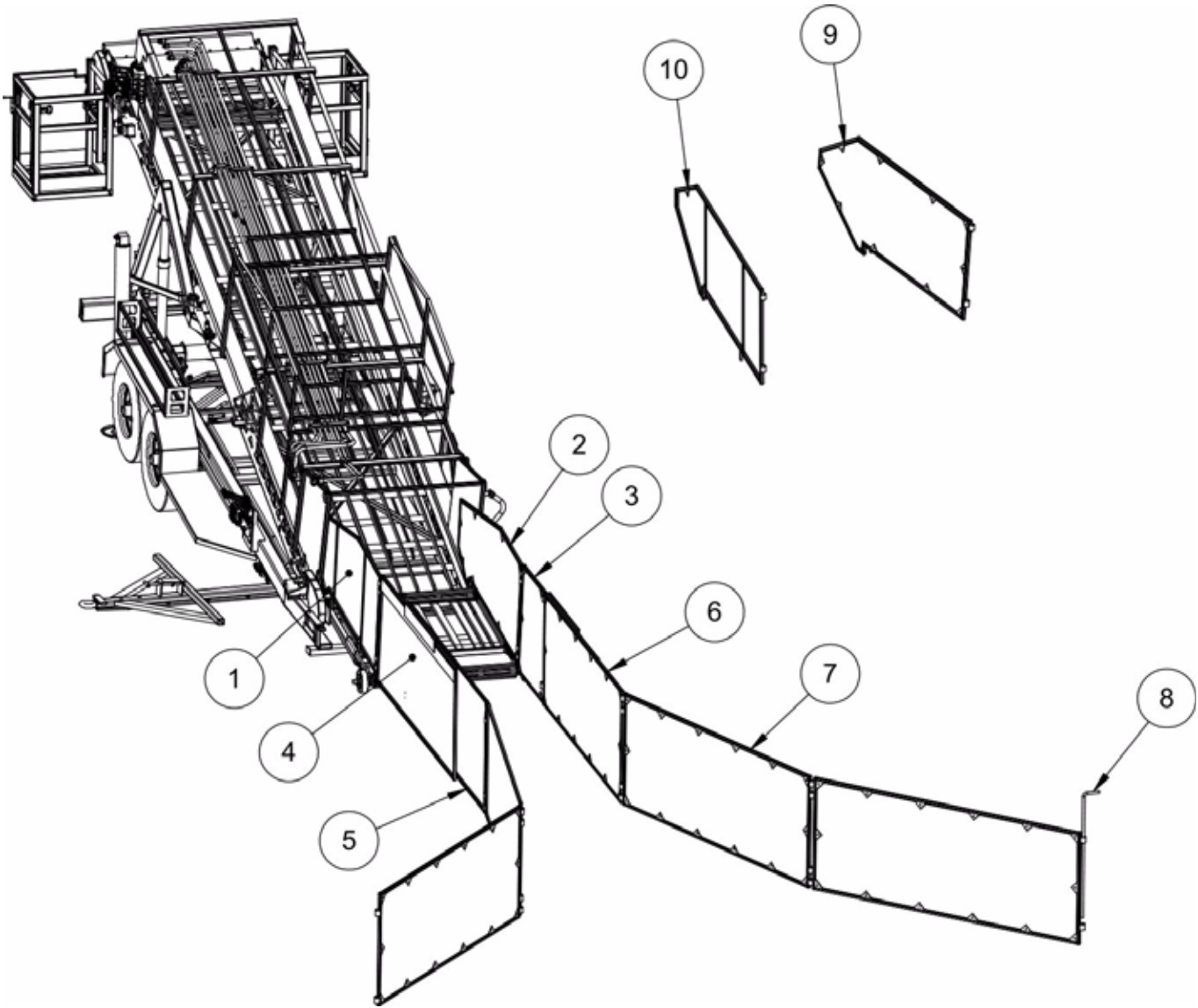
Corral Panels for Standard or Reverse Tongue Loader - - - -	2-3
Corral Panels for Pre-Loader - - - - -	4-5



Turkey Harvester

20' / 24' Standard & Reverse Tongue

CORRAL PANELS FOR STANDARD OR REVERSE TONGUE LOADER





Turkey Harvester

20' / 24' Standard & Reverse Tongue

CORRAL PANELS FOR STANDARD OR REVERSE TONGUE LOADER

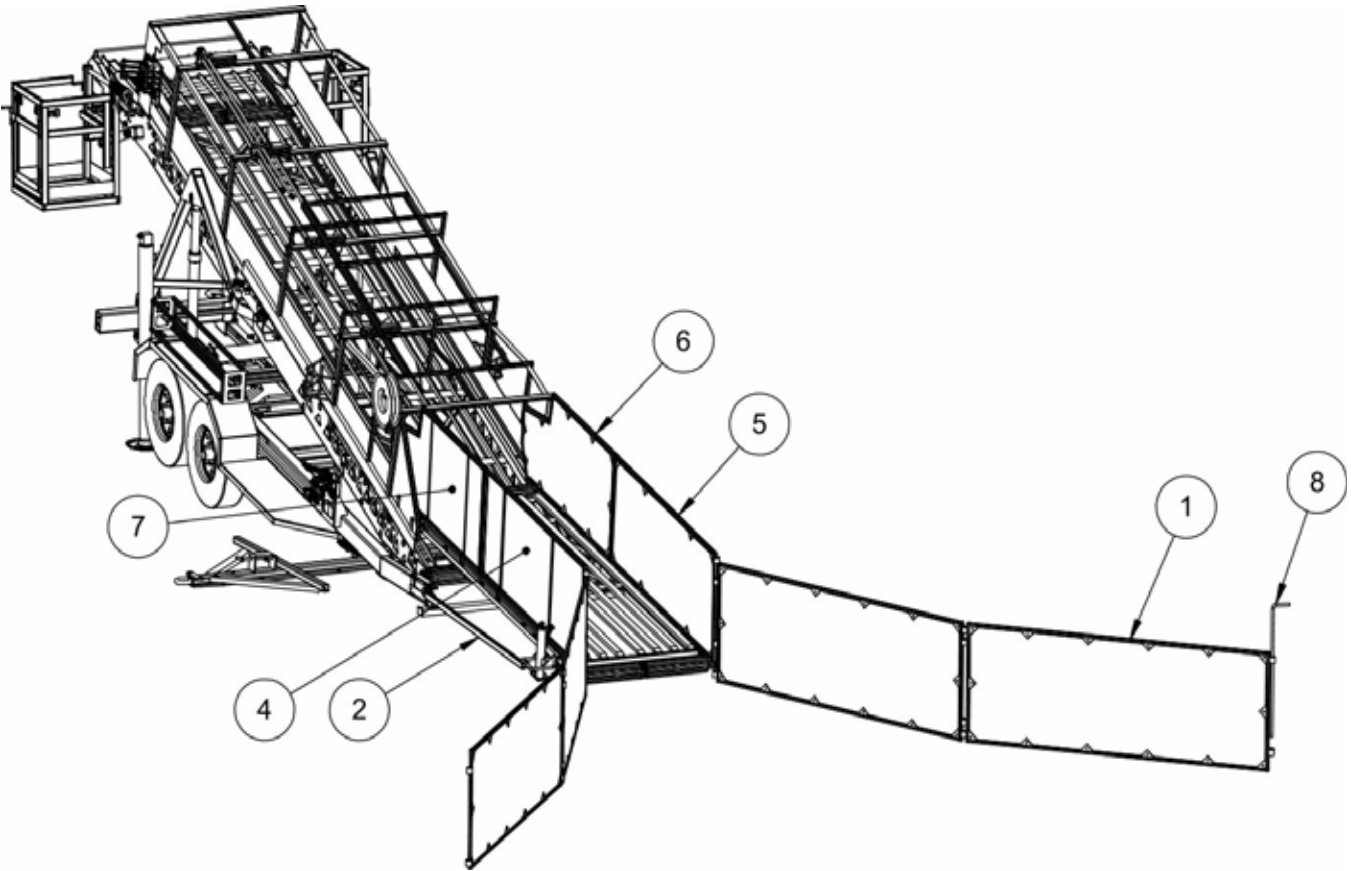
ITEM	PART NUMBER	DESCRIPTION	QTY	MODEL OR SERIAL #
1	790-00045K-5L	#1 CORRAL PANEL FOR HYDRAULIC PICKUP CONVEYOR LEFT	1	
	790-00063-5L	#1 CORRAL PANEL FOR HYDRAULIC PICKUP CONVEYOR LEFT (PLYWOOD)	1	
2	790-00045K-5R	#1 CORRAL PANEL FOR HYDRAULIC PICKUP CONVEYOR RIGHT	1	
	790-00063-5R	#1 CORRAL PANEL FOR HYDRAULIC PICKUP CONVEYOR RIGHT (PLYWOOD)	1	
3	790-00045K-2R	#2 CORRAL PANEL (TAPERED) RIGHT	1	
	790-00063-2R	#2 CORRAL PANEL (TAPERED) RIGHT (PLYWOOD)	1	
4	790-00045K-2L	#2 CORRAL PANEL (TAPERED) LEFT	1	
	790-00063-2L	2 CORRAL PANEL (TAPERED) LEFT (PLYWOOD)	1	
5	790-00045K-3L	#3 CORRAL PANEL (SLIDE CHANNEL) LEFT	1	
	790-00063-3L	#3 CORRAL PANEL (SLIDE CHANNEL) LEFT (PLYWOOD)	1	
6	790-00045K-3R	#3 CORRAL PANEL (SLIDE CHANNEL) RIGHT	1	
	790-00063-3R	#3 CORRAL PANEL (SLIDE CHANNEL) RIGHT (PLYWOOD)	1	
7	790-00045K-4	STRAIGHT CORRAL PANEL	4	
	790-00063-4	STRAIGHT CORRAL PANEL (PLYWOOD)	4	
8	790-01050	STAKE PIN	1	
9	790-00045K-1R	#1 CORRAL PANEL FOR STANDARD PICKUP CONVEYOR RIGHT	1	
	790-00063-1R	#1 CORRAL PANEL FOR STANDARD PICKUP CONVEYOR RIGHT (PLYWOOD)	1	
10	790-00045K-1L	#1 CORRAL PANEL FOR STANDARD PICKUP CONVEYOR LEFT	1	
	790-00063-1L	#1 CORRAL PANEL FOR STANDARD PICKUP CONVEYOR LEFT (PLYWOOD)	1	



Turkey Harvester

20' / 24' Standard & Reverse Tongue

CORRAL PANEL FOR PRE-LOADER





Turkey Harvester

20' / 24' Standard & Reverse Tongue

CORRAL PANEL FOR PRE-LOADER

ITEM	PART NUMBER	DESCRIPTION	QTY	MODEL OR SERIAL #
1	790-00045K-4	STRAIGHT CORRAL PANEL	4	
	790-00063-4	STRAIGHT CORRAL PANEL (PLYWOOD)	4	
2	790-10807L	PRE-LOADER STABILIZER BAR	1	
3	790-10807R	PRE-LOADER STABILIZER BAR	1	
4	790-00045P2L	#2 CORRAL PANEL FOR PRE-LOADER LEFT	1	
	790-00063P2L	#2 CORRAL PANEL FOR PRE-LOADER LEFT (PLYWOOD)	1	
5	790-00045P2R	#2 CORRAL PANEL FOR PRE-LOADER RIGHT	1	
	790-00063P2R	#2 CORRAL PANEL FOR PRE-LOADER RIGHT (PLYWOOD)	1	
6	790-00045P1R	#1 CORRAL PANEL FOR PRE-LOADER RIGHT	1	
	790-00063P1R	#1 CORRAL PANEL FOR PRE-LOADER RIGHT (PLYWOOD)	1	
7	790-00045P1L	#1 CORRAL PANEL FOR PRE-LOADER LEFT	1	
	790-00063P1L	#1 CORRAL PANEL FOR PRE-LOADER LEFT (PLYWOOD)	1	
8	790-01050	STAKE PIN	1	



Turkey Harvester

20' / 24' Standard & Reverse Tongue



Turkey Harvester

20' / 24' Standard & Reverse Tongue

Section 8

ELECTRICAL COMPONENTS

Contents

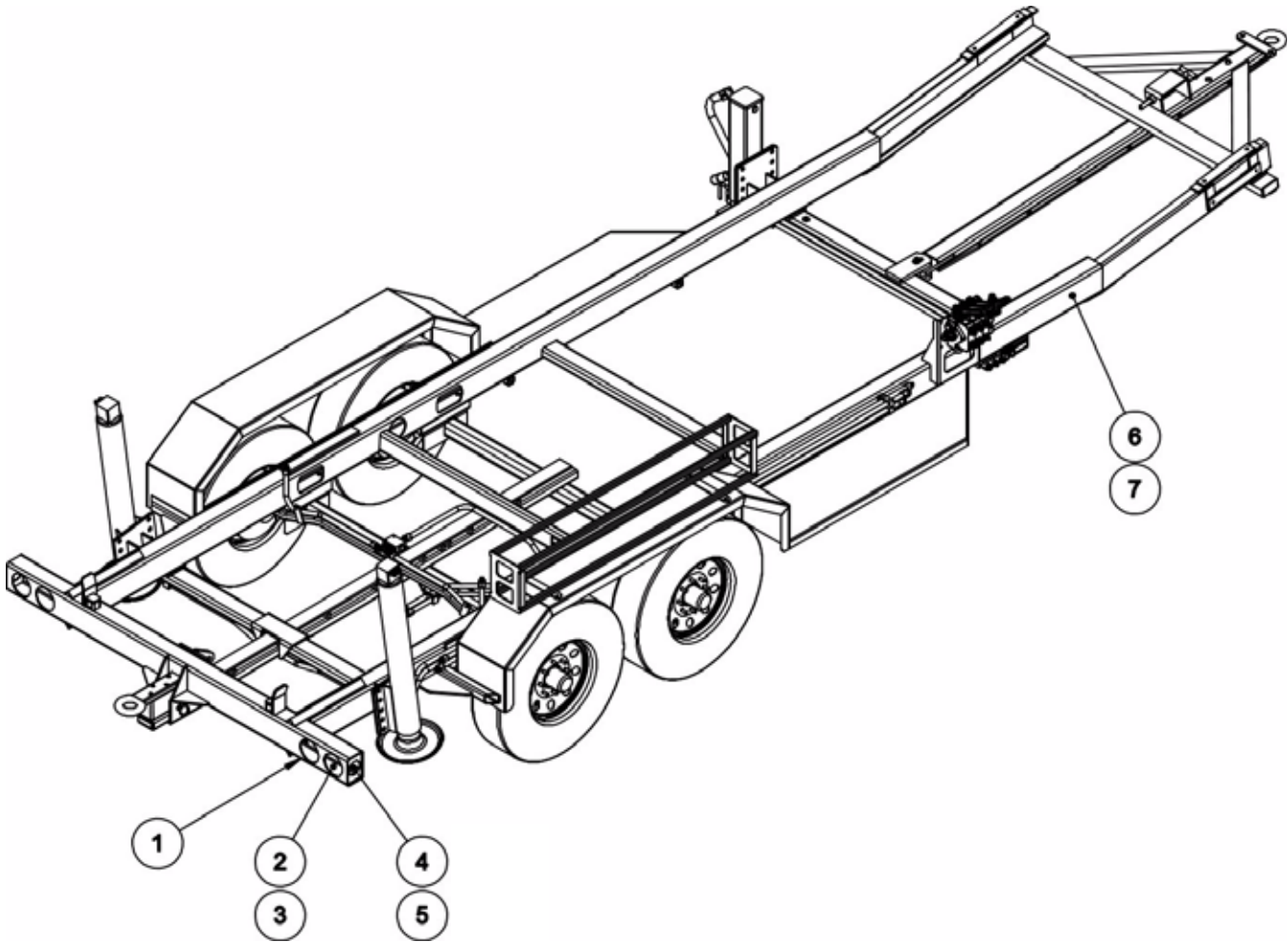
Electrical Components - - - - - 2-3



Turkey Harvester

20' / 24' Standard & Reverse Tongue

ELECTRICAL COMPONENTS





Turkey Harvester

20' / 24' Standard & Reverse Tongue

ELECTRICAL COMPONENTS

ITEM	PART NUMBER	DESCRIPTION	QTY	MODEL OR SERIAL #
1	190-00179	LICENCE PLATE LIGHT	1	
2	190-00547	RED TAIL LIGHTS	4	
3	190-00174	TAIL LIGHT GROMMET	4	
4	190-00549	RED SIDE MARKER LIGHT	2	
5	190-00178	SIDE MARKER LIGHT GROMMET	2	
6	190-00550	AMBER SIDE MARKER LIGHT	2	
7	190-00178	SIDE MARKER LIGHT GROMMET	2	
	190-00209	WIRING HARNESS (NOT SHOWN)	1	
	190-00196	WIRING PLUG ON TRAILER (NOT SHOWN)	1	
	190-00197	PLUGS FOR JUMPER WIRE TO TOW VEHICLE (NOT SHOWN)	2	
	190-00371	7 WIRE HARNESS CABLE WIRE 10 FT. LONG (NOT SHOWN)	1	



Turkey Harvester

20' / 24' Standard & Reverse Tongue



Turkey Harvester

20' / 24' Standard & Reverse Tongue

Section 9

DECALS & PLACARDS

Contents

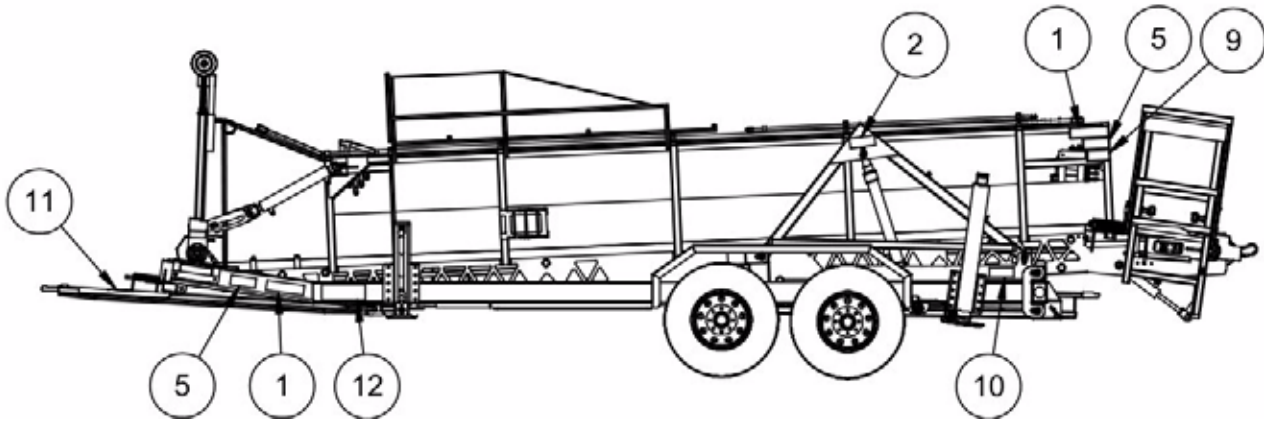
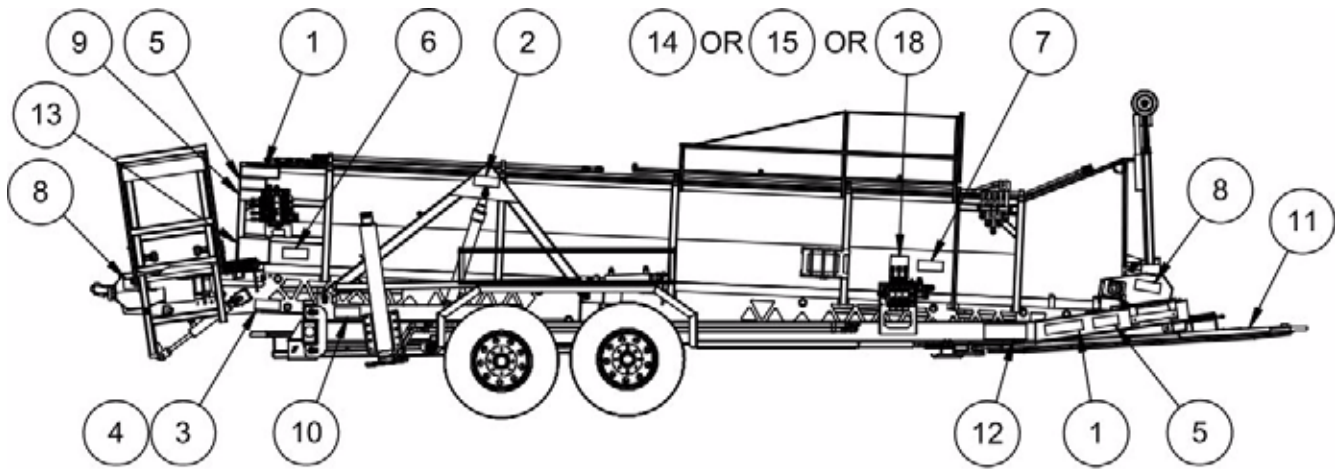
Decal & Placards Locations - - - - -	2-3
Decal & Placards Details - - - - -	4-5



Turkey Harvester

20' / 24' Standard & Reverse Tongue

Decals & Placard Locations





Turkey Harvester

20' / 24' Standard & Reverse Tongue

Decals & Placard Locations

ITEM	PART NUMBER	DESCRIPTION	QTY
1	360-00056	"WARNING - THIS BELT CAN TRAP AND INJURE FINGERS..." (2-3/4" X 10-1/2")	4
2	360-00033	"DANGER - INSTALL SUPPORT SLEEVES..." (2-3/4" X 11")	
3	360-00153	"WARNING - ARROWS MUST BE ALIGNED..." (2-3/4" X 7")	1
4	360-00157	RED ARROW	2
5	360-00044	"WARNING - DO NOT CLEAN OR MAKE ADJUSTMENTS..." (2-3/4" X 7")	4
6	360-00154	"WARNING - DO NOT OPERATE HYDRAULICS..." (2-3/4" X 7")	
7	360-00088	"WARNING - KEEP FRONT WHEELS ON GROUND..." (2-3/4" X 7")	1
8	360-00156	"WARNING - DO NOT ATTEMPT TO REMOVE GUARDS..." (2-3/4" X 7")	2
9	360-00054	"WARNING -FAILURE TO READ AND UNDERSTAND OPERATOR'S MANUAL..." (2-3/4" X 6")	2
10	360-00053	"CAUTION - WATCH YOUR STEP..." (2-3/4" X 7")	2
11	360-00075	"DANGER - ALL LOCKING PINS MUST BE IN PLACE..." (2-3/4" X 7")	2
12	360-00078	BRIGHT COOP LOGO & PHONE NUMBER (4" X 12")	2
13	360-00140	MAIN CONTROL VALVE LABEL	1
14	360-00155	STANDARD ACCESSORY VALVE LABEL	1
15	360-00152	REVERSE TONGUE ACCESSORY VALVE LABEL	1
16	360-00141	* PICKUP CONVEYOR (INDIVIDUAL CONTROL VALVE LABEL)	1
17	360-00142	* LANDING LEG (INDIVIDUAL CONTROL VALVE LABEL)	1
18	360-00158	ACCESSORY VALVE LABEL (PICKUP CONVEYOR ONLY)	1

SEE NEXT PAGE FOR DECAL AND PLACARD DETAILS

* FOR INDIVIDUAL CONTROL VALVES (NOT SHOWN)



Turkey Harvester

20' / 24' Standard & Reverse Tongue

Decal & Placards Details

BRIGHT COOP CO. NACOGDOCHES, TEX.

BRIGHT

936-564-8378

BC# 360-00078



BC# 360-00054



BC# 360-00056



BC# 360-00157



BC# 360-00088



BC# 360-00033



BC# 360-00154



BC# 360-00156



BC# 360-00153



BC# 360-00053



BC# 360-00075



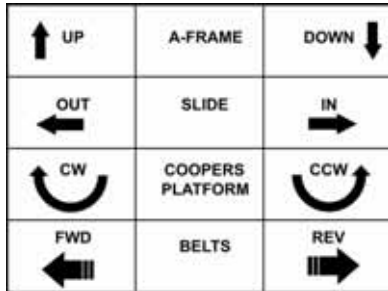
BC# 360-00044



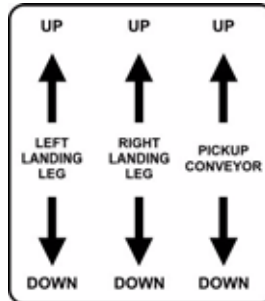
Turkey Harvester

20' / 24' Standard & Reverse Tongue

Decal & Placards Details



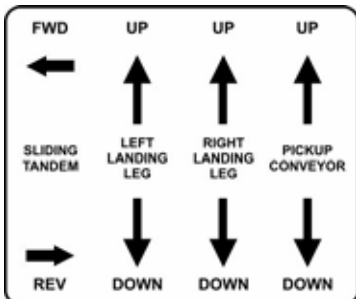
BC# 360-00140



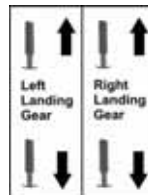
BC# 360-00155



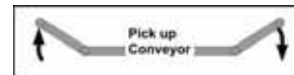
BC# 360-00158



BC# 360-00152



BC# 360-00142



BC# 360-00141



Turkey Harvester

20' / 24' Standard & Reverse Tongue



Turkey Harvester

20' / 24' Standard & Reverse Tongue

Section 10 SCHEMATICS

Contents

Hydraulic Schematic	-----	3
Electrical Schematic	-----	5



Turkey Harvester

20' / 24' Standard & Reverse Tongue

BLANK PAGE



Turkey Harvester

20' / 24' Standard & Reverse Tongue

HYDRAULIC SCHEMATIC



Turkey Harvester

20' / 24' Standard & Reverse Tongue



Turkey Harvester

20' / 24' Standard & Reverse Tongue

ELECTRICAL SCHEMATIC



Turkey Harvester

20' / 24' Standard & Reverse Tongue