

BRIGHT IDEAS.



BRIGHT INNOVATION.

CW-1000 Poultry Special Flat (Heavy Duty)

Model: VFPSCW4896

Approximate Weight 12,400 lbs.



Designed specifically for the poultry industry. The CW-1000 model includes: Additional web stiffeners, 15" crossmember spacing, 3/16" formed angles with return flanges for additional strength, 4" x 4" square tubing glad hand protectors and additional X bracing. These features come together to make the toughest Viking poultry special trailer available. Front and rear bulkheads provide added security for cage movement and panels can be added to block direct wind during transportation. Easy loading, easy cleaning, and safely transporting more product from the farm. Capacity: 80,000 lb. GVWR.



Bright Coop, Inc. is the authorized dealer for Viking Specialized - "Poultry" Transport Trailers

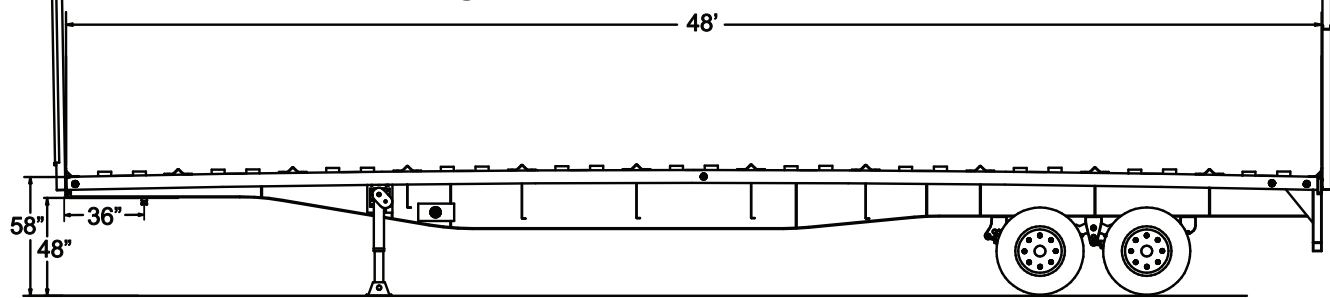
BE BRIGHT - BUY RIGHT - BUY BRIGHT'S

BRIGHT IDEAS.



BRIGHT INNOVATION.

CW-1000 Poultry Special Flat Model: VFPSCW4896



96" Wide Approximate Weight 12,400 lbs.

Capacity: 80,000 lb. GVWR

Features:

- Mainframe..... 24" Fabricated main beams with 2" camber, 1/2" x 6" top and bottom flanges with 3/16" web welded on both sides. All flange and web material is high strength steel.
- Crossmembers..... 4" x 3.2# Jr. I beam on 15" centers. Formed angles on top of the main beams and siderails serve as cage nesting device and provide a 4-3/4" air space between cages.
- Kingpin..... 2" SAE kingpin, 3/8" kingpin plate, 36" kingpin setting (standard).
- Siderails..... 6" x 8.2# (Inverted) structural channel. Two nesting devices between each formed angle.
- Suspension..... HUTCH® H9700T three point spring suspension with hi-arch heavy duty 3 leaf springs.
- Axles..... (2) 25,000 Lb., 5" round, 5/8" wall.
- Brakes..... 16-1/2" x 7", Type 30/30 brake chambers, outboard drums, Meritor WABCO® (2S/1M) ABS on one axle.
- Wheels..... 8.25 x 22.5, Steel 10 hole disc, hub piloted (color: white).
- Tires..... 11R x 22.5 Radials.
- Landing gear..... Holland® Mark V 2 speed gear with 62,500 lb. lift capacity; 200,000 lb. static capacity (standard).
- Finish..... Poultry special trailers are shotblasted and primed with zinc-rich primer and top coated with a high solid polyurethane paint. Colors: black, red or cat yellow (standard).
- Floor..... 10 ga. Steel is standard over the kingpin and tandem areas only.
- Lights..... 7-Way main receptacle, sealed wiring harness, rubber mounted LED lights. 3 Lights per side including mid-turn (4 Light cornering system and back-up lights are available).
- Tandem..... 105" Tandem setting from the rear of the trailer with 49" axle spacing. Optional settings are available.
- Tiedowns..... 3/4" Tie bar located under the crossmembers running the full length of the trailer for attachment.
- Rear bumper..... D.O.T. certified rear under ride guard/bumper and high visibility reflective conspicuity tape.

Options:

- Air ride suspension
 - Front and rear bulkheads
 - Fully floored with 10 gauge steel
 - (22) 4" Weld-on or bolt-on winches
 - Custom paint colors
 - Polished or machine finished aluminum wheels
 - D-rings
 - 3-Wheel lift transport kit
 - Improved stability system
 - Tire inflations system
- Please contact sales for more options

BE BRIGHT - BUY RIGHT - BUY BRIGHT'S